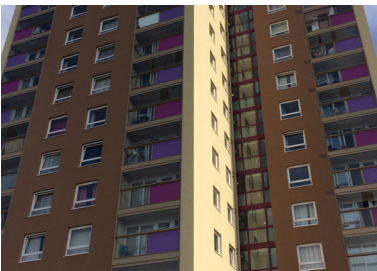




## Cumberland Towers

Client: Ipswich Council • System: Wall System 1 • Material: Mineral Wool, Silicone Render, Brick Slips  
Sector: Residential, High Rise • Build Type: New Build



Since March 2018, residents of Cumberland Towers have been enjoying the completion of £1.8m of repairs to their tower block.

The works comprised of a new heating system, energy-efficient windows, balcony screens, roof insulation and SPSenviowall external wall insulation.



Located close to Ipswich Town Centre, Cumberland Towers, a sheltered home for senior citizens has been given a makeover and brought up to modern standards and is now fit for purpose.



Contractors, Lawtech carried out the installation of SPSenviowall's Wall System 1 with mineral wool and silicone render finish, including a Brickshield system to the tower's first two floors, making the tower a renewed and more attractive landmark for the area.

### The Benefits of SPSenviowall's Wall System 1:

- Solutions for most masonry substrates available
- Extensive range of finishes available
- A range of insulation options offered
- Extremely cost effective
- Thermally enhances and protects any facade
- Suitable for low and high rise construction
- A long track record in refurbishment and new build construction
- BBA approved certification for all system options

### CPD events available

For those interested in finding out more, we provide informative RIBA accredited CPD sessions.



To book a CPD sessions, please call: 01782 367600



0800 612 4662



sales@benx.co.uk



benx.co.uk