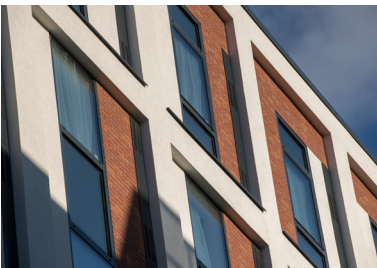




## Finzels Reach

Client: RGB Group • System: Wall System 1 • Materials: EPS, SpeedySlip Brick Slips  
Sector: High Rise, Commercial • Build Type: New Build



The new Premier Inn is a new 168 bedroomed hotel and part of the 4.7 acre, mixed-use Finzels Reach development in the heart of Bristol, delivered by main contractor RGB Group in April 2017.

Award winning specialist cladding contractor Build-Therm carried out the installation of external wall insulation and cladding after being awarded the work by the National Construction and Development Company, RGB.

### The Objective

The client desired a traditional brick façade with a columned appearance, typical of all modern, high-rise Premier Inn Hotels whilst being aesthetically sympathetic to its local surroundings where several grade II listed buildings reside, blending historic buildings with contemporary architecture.

### The Challenge

With such a small development area, facilities for storage and deliveries were limited.

To achieve a traditional brick façade would have been costly and

time consuming.

With this in mind, SPSenviowall specified its Wall System 1, a solution which utilised insulation with a flexible brick finish to provide the client with the desired look.

BuildTherm were able to utilise over 2000m<sup>2</sup> of SPSenviowall white eps insulation ranging from 150mm to 300mm which assisted in the construction of the stepped appearance on the build whilst using the SPSenviowall Staffordshire blue and red flexible brick slips to provide the traditional brick façade.

The use of SPSenviowall's Wall System 1 and flexible brick slips allowed the development to be delivered on time and to budget, the system is lightweight and well suited to the steel frame building while saving time on deliveries and requiring less physical space in which to store the building materials which would have been problematic with a traditional brick.

### CPD events available

For those interested in finding out more, we provide informative RIBA accredited CPD sessions.



To book a CPD sessions, please call: 01782 367600



0800 612 4662



sales@benx.co.uk



benx.co.uk

## The Benefits

With a U-value calculation of 0.14W/m<sup>2</sup>K and 0.11W/m<sup>2</sup>K, the new build development is energy efficient, while the client was able to achieve the desired traditional brick façade.

The SPSenviowall Wall System 1 insulation and flexible brick cladding solution was able to fulfill these criteria.

## CPD events available

For those interested in finding out more, we provide informative RIBA accredited CPD sessions.



To book a  
CPD sessions,  
please call:  
01782 367600



0800 612 4662



[sales@benx.co.uk](mailto:sales@benx.co.uk)



[benx.co.uk](http://benx.co.uk)