



DAFA Facade Kit™ EPDM rubber sheeting

DAFA manufactures EPDM rubber sheeting to your specified measurements for flashing applications, etc.

EPDM rubber sheeting can be used for:

- Rubber skirting on plinths, etc.
- Flashing around windows
- Flashing on facade structures

... and many more uses where extremely supple and flexible flashing/masking is required.

Before fixing

The surfaces to which the rubber sheeting is to be fixed should be dry and free from oil, grease and any other material that may prevent adhesion.

Fixing

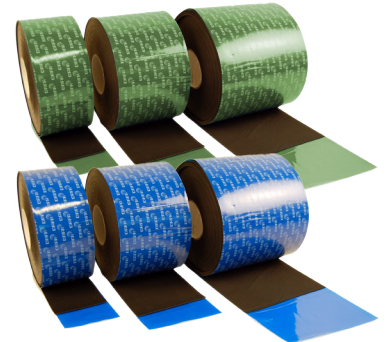
DAFA recommends DAFA High Tack EPDM adhesive. Start by cutting the laminate to the required length. Then apply the adhesive with a sealant gun. Allow some of the adhesive to evaporate before the laminate is fixed in place on the clean surface. To achieve maximum adhesion, it is recommended a taped pressure roller be used to apply pressure over all of the area where the sheeting has been applied.



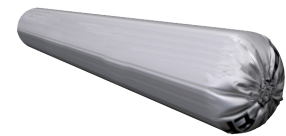
EPDM laminate is typically applied directly to the clean surface, however, it is important to ensure that the subsurface has maximum absorption and bearing capacity. For this reason,

NOTE:

DAFA also cuts EPDM rubber pads and rubber support bearings to specification.



EPDM rubber sheeting. Standard thicknesses: 1.2 mm (Blue) and 0.8 mm (Green)



DAFA EPDM High Tack adhesive for sealant gun.

