



**Recladding with confidence**

# A safe, effective approach to recladding

The well-publicised fire risks highlighted by the Grenfell Tower tragedy, still exist in many high-rise buildings, however, these risks are rarely apparent as the problems are often embedded in or under the external shell of the building.

Primary fire risks usually stem from either combustible cladding or insufficient fire breaks. Other risks involve inadequately specified componentry such as insulation, sheathing boards or support frames. In many instances the only viable remedy involves stripping off the current rain-screen cladding or external wall insulation and replacing it with improved fire rated solutions.

## Unfortunately, the market for building products in the UK is fragmented and diverse.

Sourcing the correct mix of materials across several suppliers can be problematic. As the Hackitt report has outlined, traceability and the lack of a 'Golden Thread' makes it difficult to determine the provenance and suitability of products in complex building systems.

## Not all buildings pose a fire threat

The façades on some buildings may simply require thermal or general upgrading to improve durability and longevity.

However, the problem still remains: who do you work with and how can you ensure that the products you use, specify or install are suitable and fit for purpose?.

## Benx A-rated cladding solutions

At Benx we have developed an extensive portfolio of tested and certified fire-safe recladding solutions for all build types, from single storey through to high rise-buildings. Our experience in this sector spans 20 years and covers a comprehensive range of A1 and A2 fire rated cladding systems in an array of finishes including render, brick, aluminum and multiple board options with various textures, styles and colours.

Our expertise in fire protected cladding solutions stems from our policy of carefully sourcing each of the components used in our cladding systems and then extensively testing the assembled system.



**We work extremely hard to validate each component and how it acts in-extremis alongside the other components in our systems.**

**This is the start of the Benx “Golden Thread” which links our expertise to the long-term fire safety of your building and most importantly its occupants.**

# 'long term safety of your building'

## Benx

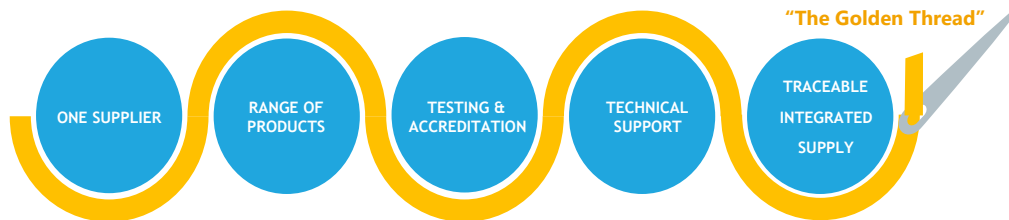
### The future of façades

Since its formation in 2002, the Benx Group has grown to become one of the UK's leading specialist providers of building façade systems. Our portfolio is continuously adapted in line with changing legislation, new material technologies and increasingly sophisticated building designs. Furthermore, we offer an unrivalled range of fully tested and certified cladding products. We complement this with a technical support package to ensure your project runs smoothly.

The Benx proposition is a single-source "Golden Thread" for your project.

Our aim is to offer the greatest variety while decreasing your risk in choosing and designing building façades.

Through our group companies RCM and SPSenvirowall, we operate at all levels of the supply chain and across many market sectors. Our valued customers include some of the UK's largest main contractors, as well as installers, architects, specifiers, utilities and social landlords.



‘tested and accredited systems available’

## Benx Recladding solutions

**Façade construction is complicated. There are multiple considerations to be taken into account when designing a facade solution.**

In this highly complex environment, it is not surprising that trying to ensure that all considerations are addressed correctly is daunting. Specifiers, contractors and other professionals are having to deal with multiple suppliers and manufacturers, each offering only partial solutions to the overall picture.

**There is an added complication:**

How can you know that there are not competing interests from different suppliers on the same project? There have been, and still are, conflicts between suppliers seeking to have their products specified and used, even if they are not the most suitable.

**An impartial overview is difficult to find.**

What experience does a sheathing board manufacture have of insulation? What knowledge does a cavity barrier supplier have in a rain screen cladding panels?

Although solutions can be found for most situations, this amalgamation of so many different suppliers makes for, at best, extra complexity, but at worst, far more risk.

**This is another way. Benx.**

Our decades-long specialisation in façade systems allows us a truly unique insight into the primary challenges and risks that façades provide. We know of few companies, if any, that bring together the range of industry leading components and systems that Benx offers, with a focus on certification, testing, performance and transparency.

Key considerations in façade design
Fire and other safety criteria.
Thermal performance, thermal bridging & condensation
Durability, maintenance and repair
Regulatory and other stakeholder compliance
Design, aesthetics and planning
Structural, wind, impact, building and facade movement
Cost and budget factors



# One of the UK's widest range of recladding systems with excellent performance characteristics

Benx offers a comprehensive range of Euroclass A1 and A2 fire classified façade systems for all types of recladding projects. Whether you require a rain-screen cladding system or an external wall insulation system with render or brick slips, we can supply a complete recladding solution from the external board outward. Our systems can be utilised on masonry, timber and metal framed structures.

To assist in your decision, our technical support team will ensure that the specified system will meet the highest design and performance expectations. We appreciate that safety is paramount in your choice of recladding systems and you can rest assured that Benx does not compromise on product performance or quality, but we also offer an unrivalled choice of finishes for your project.



## Benx product range

Benx offers a comprehensive range of fire-rated products and industry-leading solutions. Our technical expertise ensures that the specified system will meet the highest design and performance expectations.



### Fire classified products

- EWI - Cavity System
- Wall System 2
- Supertech Weather Board
- Solid Aluminium Cladding



### Fire classified products

- RendaClad
- Wall System 2
- EWI - Cavity System
- Rockpanel
- Swisspearl
- Aluminum Composite Cladding

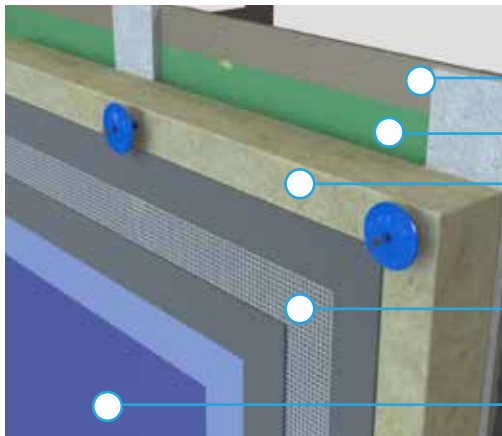
# Benx A1 fire classified recladding portfolio



## A1 non-combustible external wall insulation range

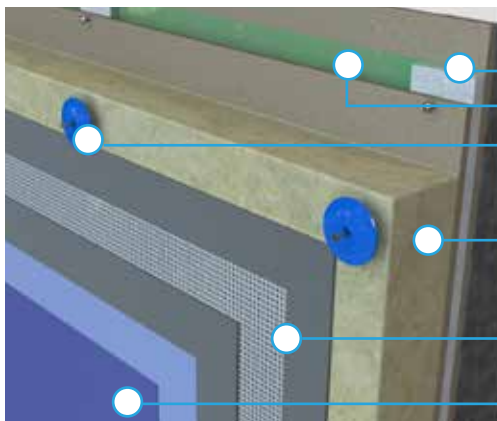
### EWI - Cavity Systems

This modern method of construction, also referred to as ETIC's, has proven extremely popular over recent years and is now the preferred recladding method for mid-to-high rise structures. Our market-leading Cavity Systems consist of Euroclass BS EN 13501 - A1 components, which are mechanically fixed back to the inner sheathing board to create the designed cavity width with either the insulation board fitted directly to the A1 fillets (CS1 system), or a secondary A1 sheathing board and insulation (CS2 system). Our A1 EWI recladding systems are supplied with a mineral top coat finish.



#### Cavity System 1

- Minimum 15mm cavity using SPSenviowall Cavity System A1 fillets
- Intumescent fire break
- Mineral Wool Insulation
- Base coat incorporating plastic glass fibre reinforcing mesh
- Mineral top coat finish



#### Cavity System 2

- Minimum 15mm cavity using SPSenviowall Cavity System A1 fillets
- Intumescent fire break
- Fixing type and fixings centres to be project specific
- Mineral Wool Insulation mechanically fixed to CS2 sheathing board
- Base coat incorporating plastic glass fibre reinforcing mesh
- Mineral top coat finish



# Benx A1 fire classified recladding portfolio



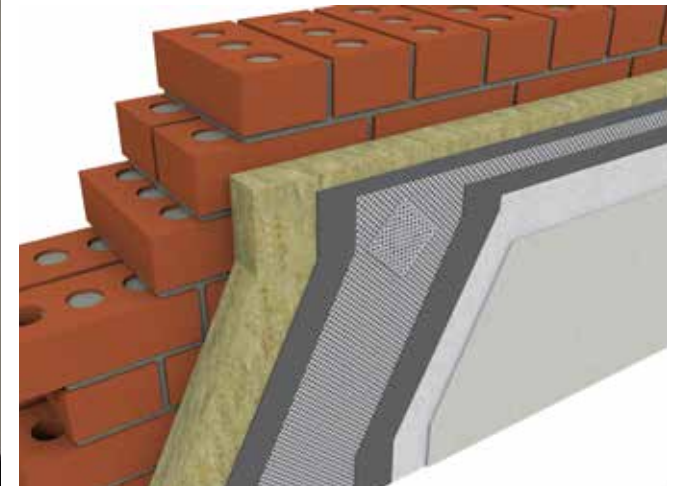
## A1 non-combustible external wall insulation range

### Wall System 2 with Enviromin Finish

KIWA and BBA approved and achieving an A1 non-combustible fire rating, this EWI system can be fixed directly to masonry and is suitable for the recladding of buildings up to and over 18m. The system includes Enviromin, a high-performance, cement based and polymer modified through-coloured mineral thin coat render.



- A1 reaction to fire
- KIWA BDA tested and certified
- BBA Accredited
- High Windload resistant
- Wide range of finishes, textures and colour options.



# Benx A1 fire classified recladding portfolio



## A1 non-combustible rainscreen cladding solutions

An A1, simple to install, fully ventilated rainscreen cladding system which has an appearance similar to that of traditional timber cladding but the durability and strength of cellulose fibre cement. With our state-of-the-art in-house coating facility we can bespoke this material to your specific recladding project.



### Supertech Weather Board



- Fire rated to EN 13501-1 class A1
- State of art, in-house UK coating line
- High levels of weather resistance
- Easy to install and lightweight
- Resistant to rot, fungus or insect attacks
- Colour matching service
- Low maintenance, long performance life
- Integrates with other Benx products
- BBA Accredited





# A selection of Supertech Weatherboard colours

The Supertech colour range has been developed for you to create great building designs. This premium weatherboard is supplied directly from our in-house state of the art coating facility, pre-finished in an array of durable, fade resistant finishes ideal for both traditional and contemporary designs. We also offer a colour matching service based on project size and minimum orders.



Traffic White  
RCM/WP01/S



Light Grey  
RCM/WP02/S



Oyster White  
RCM/WP03/S



Iron Grey  
RCM/WP08/S



Dark Grey  
RCM/WP09/S



Khaki Brown  
RCM/WP10/S



Light Ivory  
RCM/WP04/S



Pastel Turquoise  
RCM/WP06/S



Jet Black  
RCM/WP07/S



Sand Yellow  
RCM/WP14/S



Red  
RCM/WP15/S



Pine Green  
RCM/WP16/S



Dark Brown  
RCM/WP11/S



Lavender Blue  
RCM/WP12/S



Lilac Blue  
RCM/WP13/S



Blue Grey  
RCM/WP17/S



Grey Brown  
RCM/WP18/S



Grey Green  
RCM/WP20/S

## Colour Accuracy

Colour swatches have been reproduced as accurately as possible, however there may be some variations due to technical, colour reproduction and render manufacture reasons. If you require an accurate swatch, please ensure you ask us for a sample of the product and colour chosen prior to commencing any works.

# Benx A1 fire classified recladding portfolio



## A1 non-combustible rainscreen cladding solutions

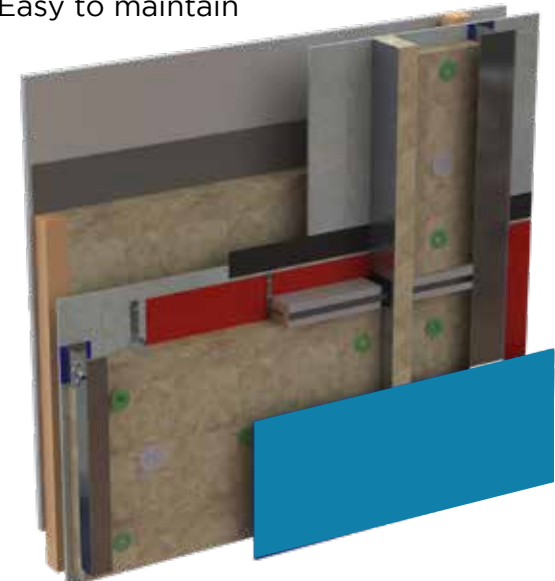
Solid Aluminium Cladding provides an A1 classified, non-combustible, high impact resistant solution with exceptional durability and mechanical benefits. Aluminium's light weight and high strength-to-weight ratio make it a valuable asset as a recladding facade, while its fire reaction and insulating properties help provide safety and energy efficiency.



### Solid Aluminium



- A1 classified non combustible to BS EN 13501-1
- Vitradual BBA Accredited
- Lightweight and easy to install
- Custom designed to a range of dimensions and shapes
- Highly durable and impact resistant
- Easy to maintain



# A selection of aluminium coating colours

The colours shown below are just a sample of the possible RAL, NCS and NCS-s colours. In addition to our stock range, our products can also be colour matched to almost any RAL colour. (Project size and minimum order may apply).



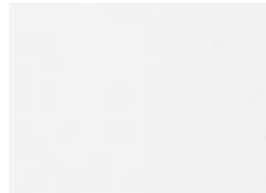
White



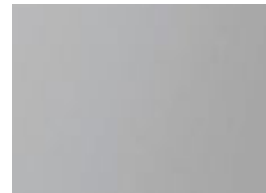
Cream



Beige



Light Grey



Platinum Grey



Basalt Grey



Anthracite Grey



Deep Black



Yellow



Orange



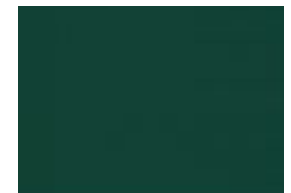
Red



Rubt Red



Yellow Green



Moss Green



Steel Blue



Ice Silver Metallic



Dark Grey Metallic



Champagne Metallic



Bronze Metallic



Copper Metallic



Gold Metallic

## Colour Accuracy

Colour swatches have been reproduced as accurately as possible, however there may be some variations due to technical, colour reproduction and render manufacture reasons. If you require an accurate swatch, please ensure you ask us for a sample of the product and colour chosen prior to commencing any works.

# Benx A2 fire classified recladding portfolio



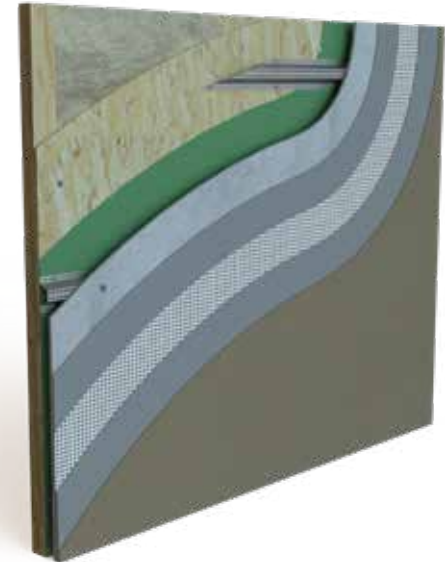
## A2 limited combustibility external wall render or brickslip system



The RendaClad EWI System offers a highly versatile, A2-s1,d0 solution. Suitable for both low-rise and high-rise buildings, RendaClad can be used on LSF and timber frame construction. The primary components of this system - the render carrier board or renders/brick slips - in which products we have decades of experience, are produced to our own formulation or standards, ensuring compatibility with each element.



- Fast method of construction
- Lightweight
- Extensive accreditation:
  - BBA
  - BOPAS
- Weather resistant and durable
- Extensive range of finishes
- Cost effective
- Multiple fixing options on timber or metal stud or Allface support frame
- Render, dash & brick options



# ‘Meeting the highest design and performance expectations’

# A selection of finishes and colours

## SpeedySlip

SpeedySlip comes in a standard range of colours as well as a colour matching service, although this service is dependadnt on project size and takes slightly longer to facilitate.



Thames Yellow



Surrey Autumn Red



Staffordshire Blue



London Sanded Cream



London Multi Stock



Kent Yellow



Charnwood Forest Grey



Charnwood Forest Buff



Suffolk Red Stock



South Downs Multi Stock



East Midlans Stock



Grey Mix

## Mineral Top Coat

Whether you are looking for a traditional look or a contemporary finish please get in touch - we have the expertise to guide and inspire you in choosing the right colour for your project. This is just a small part of our full colour range.



Antique White



African Ivory



Cornish Cream



Dawn & Dusk



Fired Copper



Tudor Rose



Earth Taupe



Mountain Grey



Platinum Metal



Mint Green



Luckworth Blue



Blue Sky



Oyster Lilly



Orchard Pink

# Benx A2 fire classified recladding portfolio



## A2 limited combustibility external wall insulation range

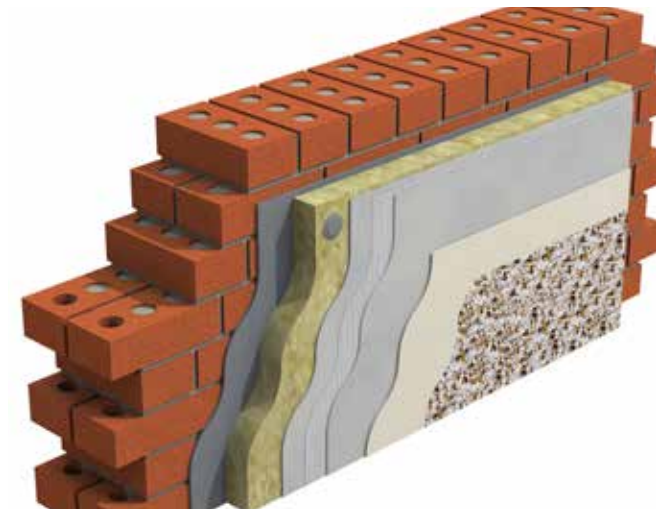
### Wall System 2 with an array of finishes



Wall system 2 is designed to provide a highly durable, extensively tested and cost effective range of external wall insulation options. Based on a A1 mineral wool insulation, complemented with a wide range of finishes including render, dash and brick, we are able to offer multiple choices to clients to express creativity in building design. All in the knowledge that the systems have full Agrément certification available.

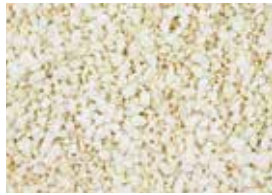


- Robust external wall insulation
- High Windload resistant
- Cost effective
- Fast application
- Tried and tested
- Highly durable and weather resistant
- Wide range of of finishes, textures and colours available
- BBA and KIWA Agrément options



# A selection of dash colours

We have a vast range of both dash receiver colours and aggregate available. These can be used to create both geographically traditional and unique finishes.



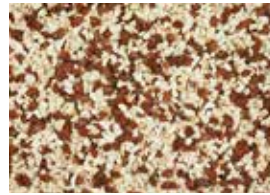
Ashton Cream



Barleycorn



Black Basalt



Cameo



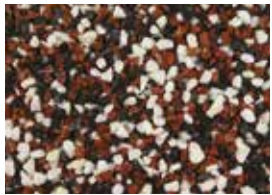
Classix Spa



Derbyshire



Harvest



Heritage



Honey



Iris



Nordic



Oatmeal



Polar Black & White



Ploar White

## BrickStick

Below is a small selection of colours available in the BrickStick range, however a colour matching service can be offered on minium quantity orders.



Handform Autumn Leaves



Handform Colorado Flamed



Sanded London Stock



Smooth Staffordshire Blue



Weathered Red Coat



Cambridgeshire Multi Stock



Findon Buff Stock



Himley Blue Smooth Square



Light Brown Stock



Liverpool Stock



Swindon Red



Bingley Orange

### Colour Accuracy

Colour swatches have been reproduced as accurately as possible, however there may be some variations due to technical, colour reproduction and render manufacture reasons. If you require an accurate swatch, please ensure you ask us for a sample of the product and colour chosen prior to commencing any works.

# Benx A2 fire classified recladding portfolio



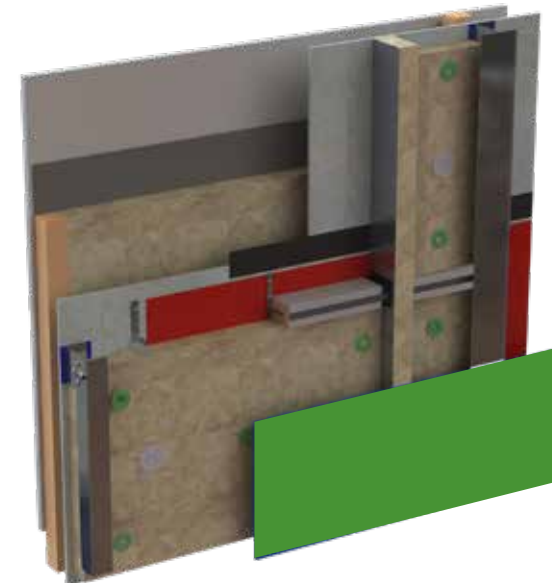
## A2 limited combustibility rain screen cladding solutions



Rockpanel is a leading manufacturer of sustainable, fire rated façade solutions. These A2 fire classified boards are finished with a 4 layer water-based coating to seal in the appearance and colour to provide a lasting finish. Rockpanel facades have the hardness and durability qualities of stone but provide the advantage of a material which has the workability of wood.



- Fire classified of EN 13501-1 class A2-s1, d0
- Easy to install and low maintenance
- Almost 100% recyclable
- Lightweight and easy to install
- Exceptional weather resistance
- More than 200 colours, surface finishes and patterns
- Customised solutions
- Integrates with other Benx products





# A selection of Rockpanel colours

The Rockpanel facades range includes a variety of surface finishes and colours. With 11 different ranges available including Rockpanel Colours, Rockpanel Metallics, Rockpanel Chameleon and Rockpanel Woods. The solid colours, woods and metallics are the most popular ranges used and we have included them below, however, we are able to supply all 11 ranges available.

## Colours



RAL 040 40 50



RAI 040 40 50 05



RAL 060 50 30



RAL 060 50 70



RAL 060 70 05



RAL 060 70 20



RAL 070 70 60



RAL 095 50 50



RAL 130 50 30



RAL 140 60 10



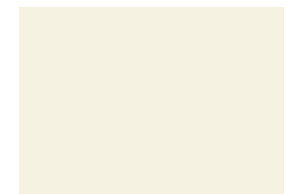
RAL 250 40 15



RAL 3004



RAL 7016



RAL 9001

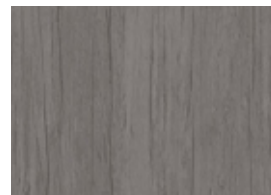
## Woods



Alder



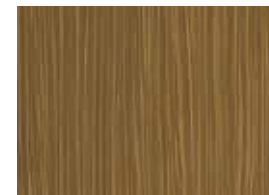
Beech



Carbon Oak



Cheery



Ebony Limestone



Ebony Marble

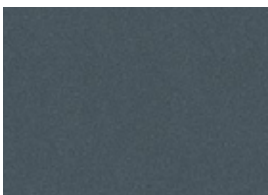


Slate Oak

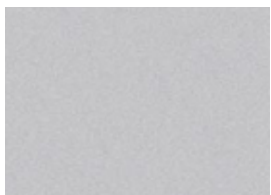
## Metallics



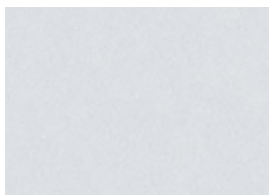
Aluminium



Alumium Grey



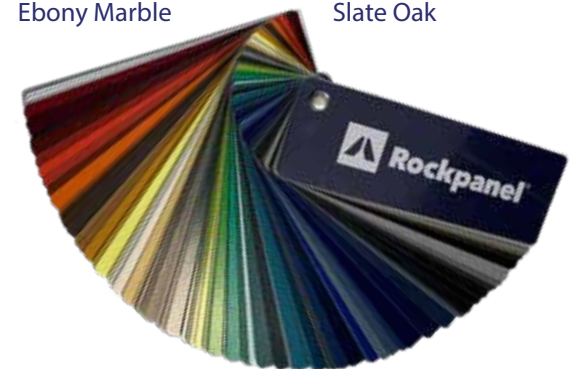
Anthracite



Gold



Graphite Grey



## Colour Accuracy

Colour swatches have been reproduced as accurately as possible, however there may be some variations due to technical, colour reproduction and render manufacture reasons. If you require an accurate swatch, please ensure you ask us for a sample of the product and colour chosen prior to commencing any works.

# Benx A2 fire classified recladding portfolio



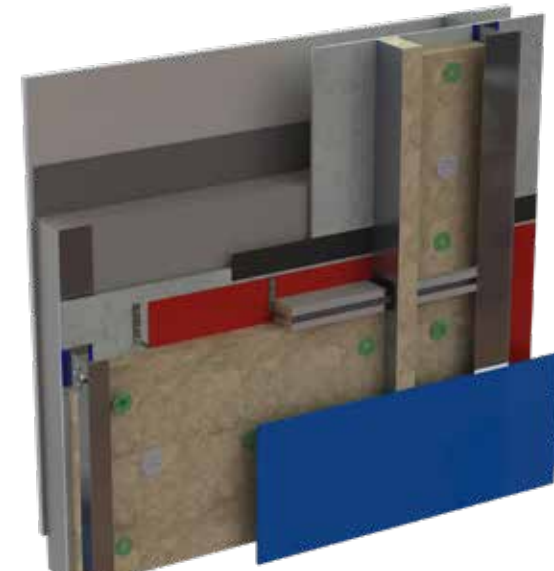
## A2 limited combustibility rain screen cladding solutions



KIWA and BBA approved, Swisspearl coloured fibre cement panels give façades what they need: a face, individuality, character, texture, colour and, very importantly, a highly effective protective layer. The range consists of six different style ranges, with the majority integrally coloured.



- Fire classified to EN 13501-1 class A2-s1, d0
- High levels of weather resistance and durability
- KIWA Through Wall Agrément
- Customised colours and colour match fixings available
- Virtually maintenance free
- Recommended for buildings over 18m
- Long life expectancy
- Integrates with other Benx products



KIWA Agrément as full system from sheathing board to finished Swisspearl panel

# A selection of Swisspearl colours

Swisspearl™ innovative approach includes a highly demanding production process for integrally coloured cement composite panels which are offered in a wide variety of colours.



Avera 020



Avera 030



Avera 040



Avera 050



Avera 070



Carat 7031 Coral



Carat 7033 Coral



Carat 7040 Azurite



Carat 7041 Azurite



Carat 7043 Azurite



Carat 7050 Jade



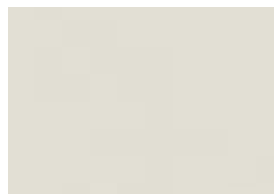
Carat 7060 Sapphire



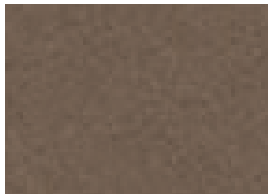
Carat 7073 Topaz



Carat 7081 Amber



Carat 7099 Onyx



Nobilis 213



Nobilis 412



Nobilis 513



Reflex 9020 Platinum



Reflex 9221 Black Velvet



Reflex 9240 Blue Ice

## Colour Accuracy

Colour swatches have been reproduced as accurately as possible, however there may be some variations due to technical, colour reproduction and render manufacture reasons. If you require an accurate swatch, please ensure you ask us for a sample of the product and colour chosen prior to commencing any works.

# Benx A2 classified fire recladding portfolio



## A2 limited combustibility rain screen cladding solutions

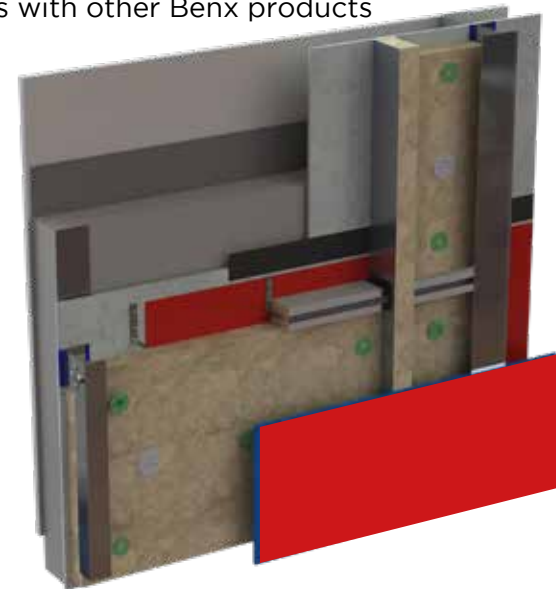
### Aluminium Cladding

Benx's range of A2 fire classified aluminium cladding panels are lightweight metal cladding ideal for external façades and rainscreen cladding systems. Versatile, easily formable and highly resistant to weather, aluminium cladding panels are a cost-effective solution to creating a striking and innovative recladding facade.



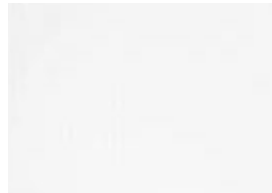
**ALUCOBOND®** 

- Fire classified option of EN 13501-1 class A2-s1,d0
- High levels of rigidity and impact resistance
- Excellent weather resistance
- Variety of surface finishes and colours
- BBA approved
- Flat versatile panels with high levels of formability
- Easy to work with
- Integrates with other Benx products



# A selection of Aluminium cladding colours

Below is a selection of aluminium cladding colour options that give you unlimited design flexibility. We also offer a full colour matching service if you have a non-standard, RAL or Pantone colour to match or just want to create something unique. (Project size and minimum orders may apply)



Bleached Cotton



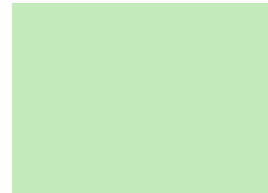
Brushed Silver



Coral Blue



Eucalyptus



Fresh Green



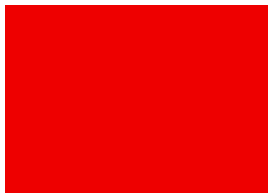
Hessian



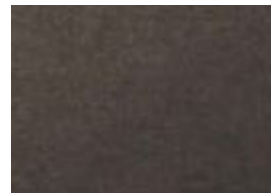
Horizon Violet



Light Slate



Poppy Red



Rain Cloud



Rose Pink



Sandcastle



Sky Blue



Spring Green



Sunset Orange



Yellow Spirit



Chromatic Diamond  
Purple



Chromatic Tiger



Chromatic Jungle  
Green



Chromatic Lighthouse  
Blue



Chromatic Sunset  
Purple









## Colour Accuracy

Colour swatches have been reproduced as accurately as possible, however there may be some variations due to technical, colour reproduction and render manufacture reasons. If you require an accurate swatch, please ensure you ask us for a sample of the product and colour chosen prior to commencing any works.

# The Benx range of supporting components




We appreciate that you may require specific elements of a recladding system and we are on hand with UK's most extensive range of supplementary components.

## A1 non-combustible sheathing boards







	High-quality flexible calcium silicate based fibre cement building board		
	Highly versatile cellulose fibre cement building board		
	High performance sheathing board that consists of a fibreglass mat with a gypsum core	Pending	

## Cavity Barriers

Cavity barriers can vary considerably depending on the type of cladding system under consideration. Benx only supply cavity barriers as part of a system, not as standalone products.

Our portfolio	Our assessments focus on a range of factors, including:
  	<ul style="list-style-type: none"> <li>Regulatory performance</li> <li>Fixing method</li> <li>Interface with other products such as sheathing board</li> <li>Installation details</li> <li>Test performance</li> </ul>




## Ancillary Items

Our portfolio	Product
  	<p>Breather membrane</p> <p>EPDM weather resistant seals</p> <p>Vapour control layer (VCL) tapes</p>
	RCM Joint Seal is a fully tested air tightness seal. It has been designed to create an air tightness seal on our external sheathing board range. RCM Joint Seal can also be used independently of RCM products.
	A neutral cure silicon sealant used to seal movement joints, providing up to 4 hours fire protection while allowing a movement accommodation factor of 50%.
<h3>Fixings</h3> 	<p>Fixings are an integral part of multiple elements of any external cladding system. They are used with:</p> <ul style="list-style-type: none"> <li>Sheathing boards</li> <li>Insulation</li> <li>Support frame</li> <li>Cavity barriers</li> <li>Trims and flashings</li> <li>External cladding panel</li> </ul> <p>These elements require different solutions depending on various factors.</p>

# The Benx range of supporting components

## Insulation

Benx has considerable experience in the use of multiple insulation types within our external wall insulation (EWI) systems incorporating both render and brick slip options. The development of our rain screen systems is a natural evolution of this knowledge and expertise

Our portfolio	Key Criteria in your choice of Recladding Insulation
	<p><b>Fire classification and resistance</b></p> <p>It is important that fire classification includes the overall wall structure that the insulation is being designed into for the façade or inner wall.</p>
	<p><b>Thermal and Condensation Risk Analysis</b> - A key part of any through-wall system assessment is its impact on energy efficiency. Benx has provided U-value calculations to clients for many years on our EWI systems and will shortly offer 3D thermal modelling on our rain screen systems as well.</p>
	<p><b>Fixing method</b> - Understanding substrates, sheathing boards, wind loading, building movement and fire are all key when securing insulation, especially for EWI systems.</p>

## Support frame



The choice of support frame is a key consideration in façade design. The support frame is a dynamic structure, affected by wind, thermal effects and building movement and secures the entire cladding panel system.



### Features

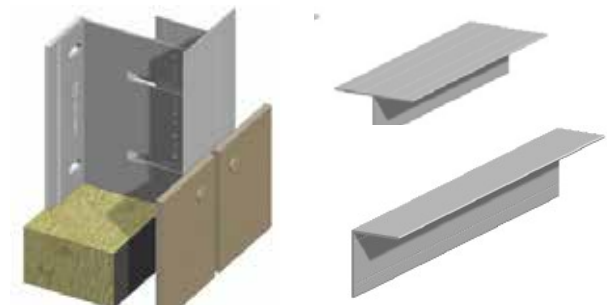
- Multiple solutions available
- Suitable for all substrates
- Compatible for most façade systems
- Cladding accessories available
- Variable support frame dimensions allow for different cavity depths.
- High strength aluminium
- Indicative and full design service available

### Fixings

We offer a range of support frame options to accommodate different building structures, heights, locations (including marine), the type of cladding panel and cost considerations. A key design consideration is the choice of fixing method:

- Face fix cladding
- Secret fix cladding

Benx offers both these fixing methods with an extensive range of options to provide the most appropriate overall design solution.



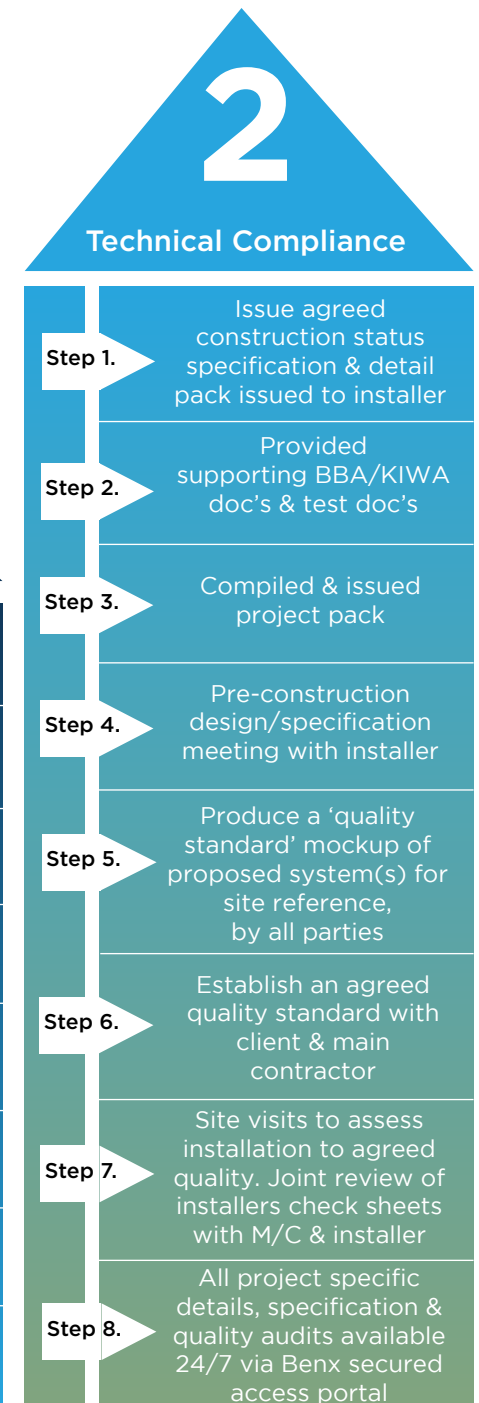
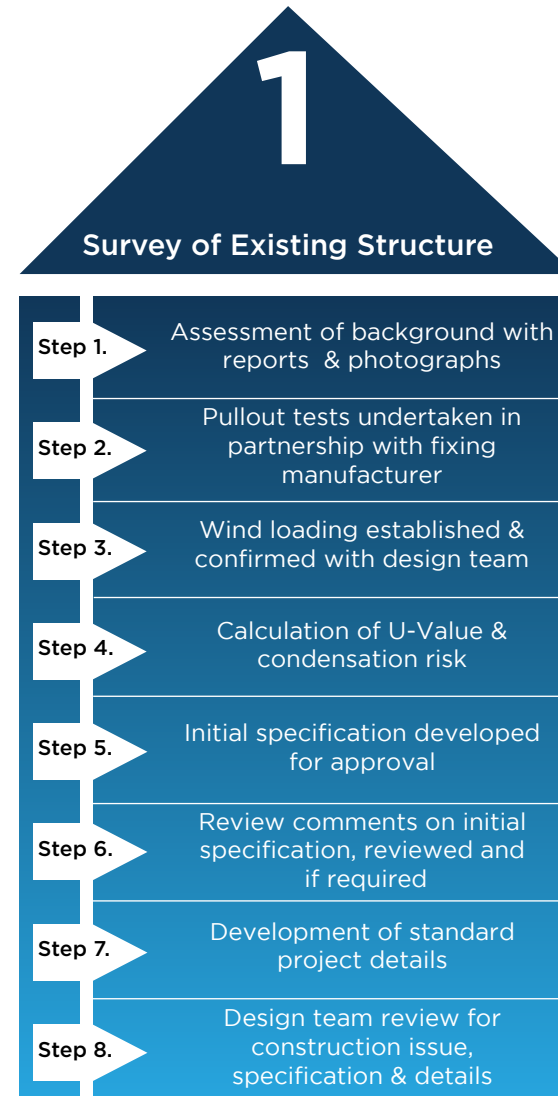
# An adaptive recladding Solution

Each recladding project is unique, having its own specific requirements. What never changes, is our dedication to helping our clients with the highest quality façade solutions. This philosophy is at the heart of our business.

With such a diverse range of products, systems and solutions it is not possible for us to map out each specific journey we take with our clients. It can be as simple as enquiry-and-purchase to the multi-tiered all-embracing example illustrated here... and most anything in between

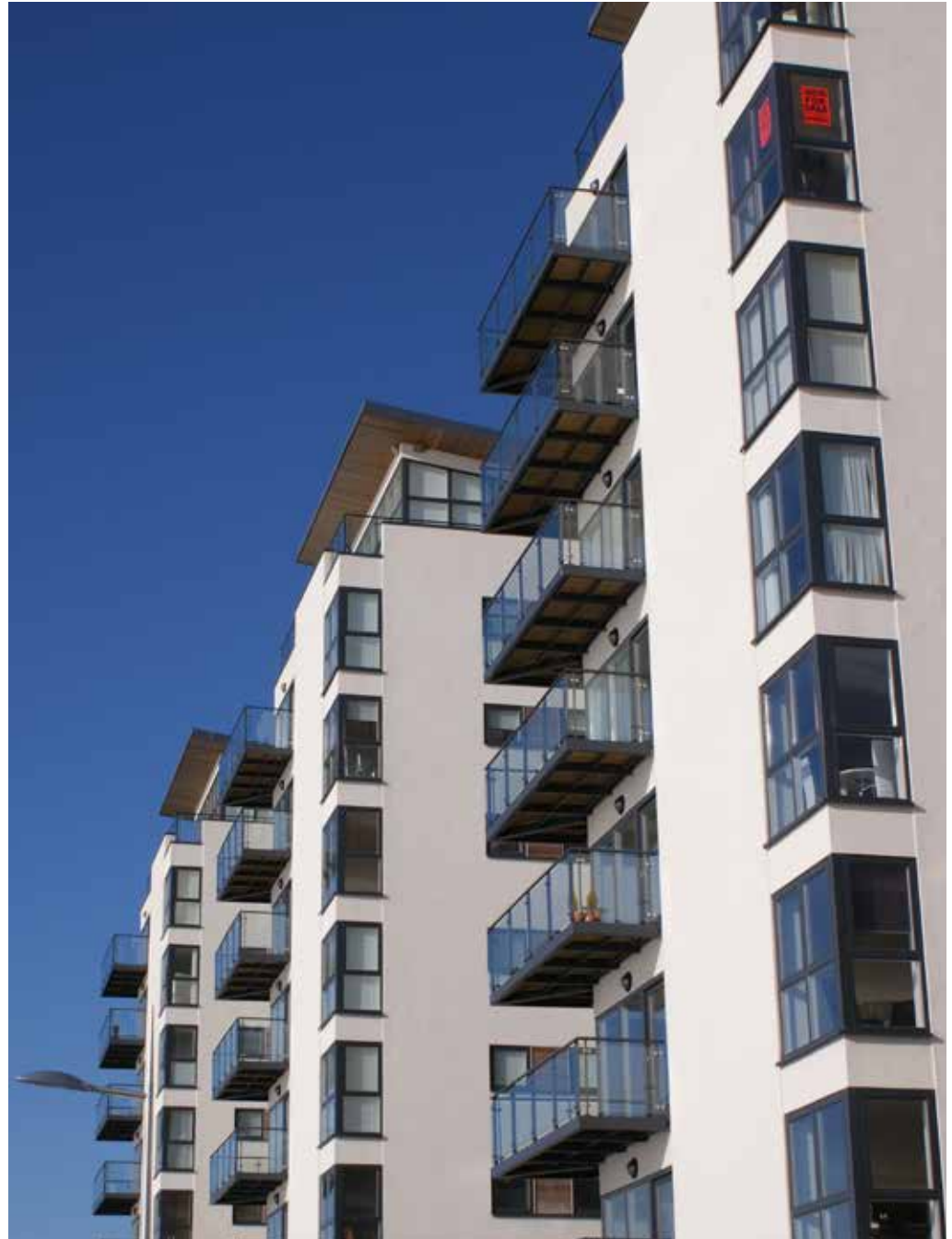
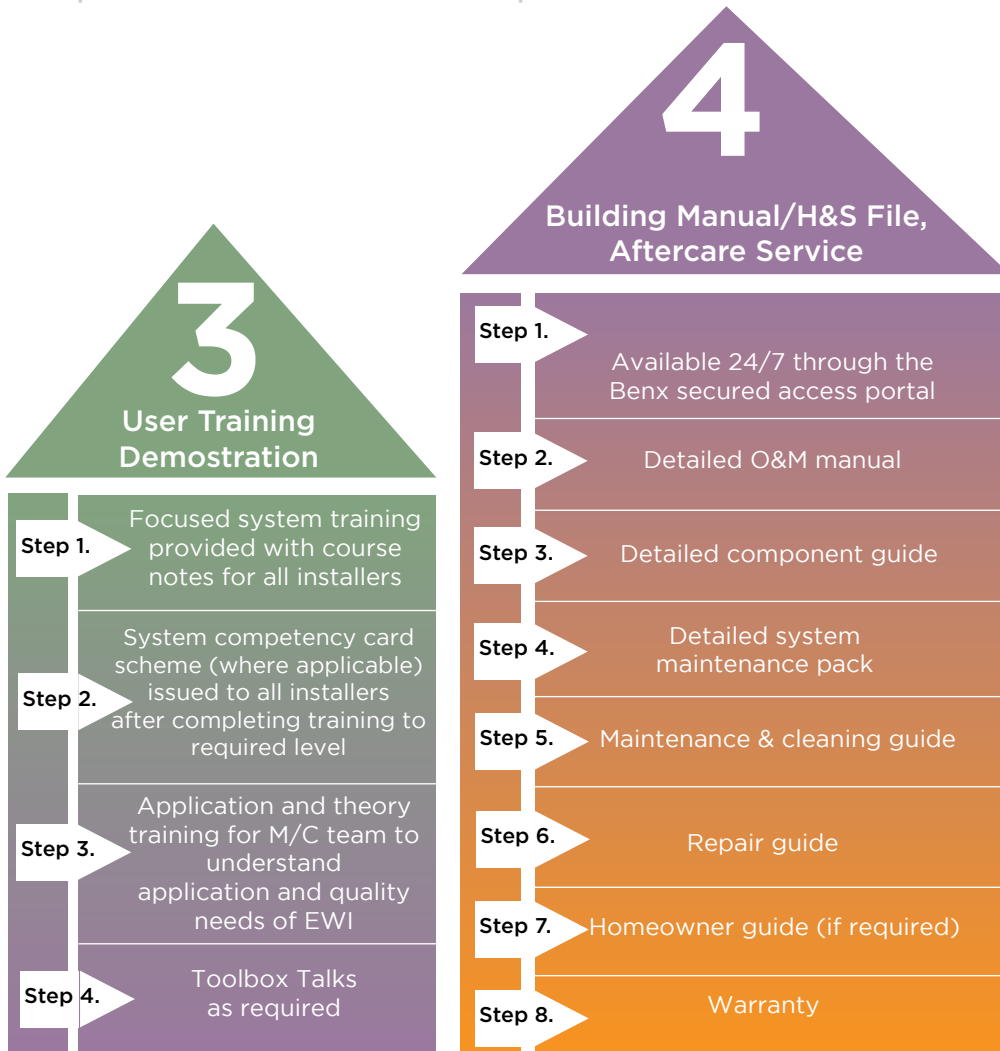
On the right we offers some examples of process flows and the activities that the Benx team can provide.

‘highest quality  
façade solutions,  
is at the heart  
of our business’





Our approach is quite simple: we do not try and make things fit where they do not fit. However we do try to ensure that we use our considerable expertise to offer practical, robust and evaluated products and services to help our clients to the upmost of our abilities.



# Extensive testing is core to our business

Fire is at the forefront of all stakeholders minds and rightly so, but there are many other elements of façade compliance and performance that also are key to safety, durability and building performance.

## Fire

As a business, our focus is not just on headline fire classifications, but where possible we also look at the relationship between the various tests, products and systems and how they interact. For recladding, although not exclusively, the primary standards or test are :

- BS 8414 - combined with the BRE 135 classification report.
- BS EN 13501-1 - incorporating BS EN 1716 and EN ISO 1182 and BS EN 13823
- BS EN 1366-4 & principals of ASFP - TGD 19
- BS EN 1364 or BS EN 1365- Can become relevant if the sheathing board has to change.

Although each standard is looking at a particular issue relating to that product or system there can be implications on the relationships between them. You may find that on a recladding project, if the building has a sheathing board which is now deemed unsuitable due to the fire classification, and is then replaced, there may be a requirement for the inner wall to achieve say a 60 minute fire rating under BS EN 1364. If so, is there evidence to support this change?

We always work diligently to help clients identify the issues at hand and help find solutions.



# A holistic approach to testing

Recladding considerations can include, wind, impact resistance, pull-out testing, structural loading on the support frame, thermal and condensation calculations, water penetration, durability of the cladding under variable climatic conditions, alternate material interface and more.

The primary testing program for insulated renders (which has multiple tests) is ETAG 004. The primary testing program for rainscreen cladding systems (which also comprises of multiple tests) is ETAG 034 Part 1 and part 2.

Many rainscreen cladding manufacturers complete part 1, which looks at the performance of the cladding panel and the support frame in isolation. However more often than not, the panel suppliers do not include the support frame assessment as part of the Agrément or third party certificate. Why not?

There could be many reasons, but it still leaves a significant gap between ensuring that the system has been assessed holistically as opposed to simply assessing the individual components in isolation.

**Benx offers a different approach.**

**We are continually adding more and more fully certified solutions to our portfolio and more and more testing to support the evidential interaction between products, systems and standards.**



# Recladding with confidence with Benx

## A Dedicated Recladding Portfolio : Range + Quality

We provide a dedicated, wide ranging and tested recladding portfolio which negates the need for you to reach out to numerous component and system suppliers; this ensures that you have at your disposal a simple, responsive and reliable supply chain.

## Technical Expertise at your fingertips

We aim to reduce complexity in what has become a confusing sector. Our systems are designed to ensure transparency across design and supply. At the heart of this approach is the provision of an online portal, a secure online back up of your dealings with us. Specifications technical documentation and correspondence are made available to you in real time through the Benx portal

## Extensive Certification: Proof of our Competence

We operate a comprehensive testing and certification process backed by technical and design support. We believe it to be one of the most extensive and far-reaching certification and accreditation processes in the industry.

## We are never far away.

Benx is headquartered in the centre of the UK, in close proximity to the region's primary routes. From here we can bespoke our portfolio to your specific requirements via our in-house fabrication service where we cut building boards and façades to exact sizes, thereby reducing on-site cutting time, minimising wastage and improving environmental impact. We also create our own renders and coat our own weatherboard. Furthermore we operate a branch network strategically placed close to the UK's main conurbations. This ensures that no matter where you contract is, we are never far away.

## The Golden Thread

We believe this all-embracing approach, squarely focussed on technical competence, will provide you with a "Golden-Thread" which can link every Benx-sourced component housed deep in the cladding system all the way back to its point of manufacture. We believe that our approach to product provenance can help re-establish confidence in the recladding sector.

Benx works with many of the leading assessment bodies and test houses.



Thank you for taking the time to review our Recladding with Confidence brochure.  
If you require any further information on our products or services, please contact us.

Sales  0800 612 4662  [sales@benx.co.uk](mailto:sales@benx.co.uk)

Technical  0800 488 0531  [technicalservices@benx.co.uk](mailto:technicalservices@benx.co.uk)  [www.benx.co.uk](http://www.benx.co.uk)



#### Disclaimer

By using or accessing the brochure, you agree with the following Disclaimer. Benx Limited ('the Company') reserves the right to terminate, revoke, modify, alter, add and delete any of the information in the brochure. The Company shall be under no obligation to notify the user of the amendment to the contents of the brochure. Computer generated images, walkthroughs and render images used on this brochure are the artist's impression and are an indicative of the actual designs

The information in this brochure is presented as general information and no representation or warranty is expressly or impliedly given as to its accuracy, completeness or correctness. It does not constitute part of a legal offer or contract. While every effort has been made to ensure its accuracy, this brochure may unintentionally include inaccuracies or errors. The user must verify all the details and specifications independently with the Company prior to concluding any decision to purchase or use the Company's products..

In no event shall the Company be liable to the user or any third party for damages, losses and causes of action (including but not limited to negligence), errors, injury, whether direct, indirect, consequential or incidental, suffered or incurred by any person/s or due to any use and/or inability to use this brochure or information, action taken or abstained through this brochure. While every effort has been made by the Company to ensure that information in the brochure is up to date, accurate and correct, the users are requested to make their independent enquiry before relying upon the same.