



## Wellington Warmer Homes

Client: Taunton Deane Borough Council • System: Wall System 2 • Material: Silicone Render  
Sector: Low Rise, Residential • Build Type: Refurbishment Mineral Wool



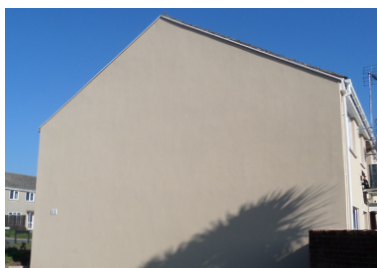
122 properties in the Priory area of Wellington have been totally transformed with the application of SPSenviowall's Wall System 2.

With additional funding within the original budget, an extra 20 properties were brought up to standard totalling 132 homes.



Between January and July of 2018, work was carried out to insulate the homes of local authority owned properties in the Priory area of Wellington attributed to a £1.3 million pilot project by Taunton Deane Borough Council.

In addition to external wall insulation, tenants had night storage heaters replaced with air source heat pumps, some of which would be installed after the installation of external wall insulation which presented a challenge to LCX and SPSenviowall.



The Laing Easiform properties are one of the least energy efficient types of housing.

The solution presented itself by designing render panels which could easily be removed to allow for the installation of the more thermally efficient ASHPs at a later date.

Taunton Deane Borough Council looked to improve the thermal efficiency of their housing stock whilst helping their residents out of fuel poverty and lowering their energy bills by installing new windows, thermally efficient air source heat pumps and external wall insulation.

The SPSenviowall system used in Wellington specified 100mm thick mineral wool applied to the substrate with mechanical fixings.

Low Carbon Exchange (LCX) carried out the work to 112 council properties utilising the SPSenviowall Wall System 2 system with 100mm mineral wool and EnviroSil silicone topcoat finish.

High impact mesh was then covered in 1.5mm of SPSenviowall EnviroSil. The BB54 and SC73 silicone topcoat colour was selected from an extensive palette of colours which was then applied to the render.

### CPD events available

For those interested in finding out more, we provide informative RIBA accredited CPD sessions.



To book a CPD sessions, please call: 01782 367600



0800 612 4662



sales@benx.co.uk



benx.co.uk

Not only does SPSenviowall EnviroSil offer a protective finish, it provides an attractive façade to the properties, uplifting the local area.

This system provided an exceptional u-value calculation of 0.30W/m<sup>2</sup>k, a huge impact on the energy efficiency of the properties from the previous 1.17W/m<sup>2</sup>k, contributing to reduced energy consumption and CO<sub>2</sub> emissions.

The SPSenviowall silicone topcoat, a high vapour permeable product making it ideal to use as a finish with all types of insulation, especially in

conjunction with a mineral wool insulation and is available in 1.00mm, 1.50mm, 2.00mm and 3.00mm grain size.

The SPSenviowall Wall System 2 offers alternative finishes including EnviroCryl, Granomin, Envirodash, EnviroBrick, SpeedySlip, BrickStick and PanelBrick as well as alternative insulation options which include EPS and Phenolic.

#### CPD events available

For those interested in finding out more, we provide informative RIBA accredited CPD sessions.



To book a CPD sessions, please call: 01782 367600



0800 612 4662



[sales@benx.co.uk](mailto:sales@benx.co.uk)



[benx.co.uk](http://benx.co.uk)