

Sheathing Boards

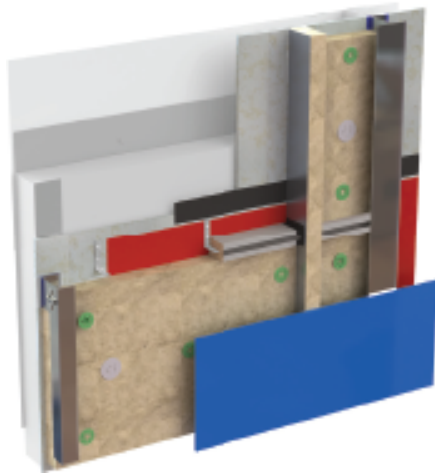
Perfect for all Applications



Y-wall

Y-wall is a market leading, A1 fire-rated, calcium silicate based fibre cement sheathing board. This BBA certified product is perfect for use as a fire rated sheathing board.

Offering excellent fire rated properties as well as high levels of dimensional stability, Y-wall is an exceptional board for use in multiple applications.



Features

- Flexible and strong
- Excellent water resistance
- Easy to use
- High levels of dimensional stability



Key Applications

- Fire rated sheathing board
- OEM applications for improved strength and density
- Recommended for buildings above 18m

Suitable for:

Lightweight steel frame
Timber frame
Concrete frame



Fire rating:

A1 rated to BS EN 13501-1: 2018



Y-Wall can be cut, drilled and nailed using conventional hand tools; offering many of the properties of timber. For cutting in any volume, we recommend the use of an RCM polycrystalline diamond Dart Blade to avoid excessive wear on other blades. Alternatively, we offer a complete fabrication service.

Technical Specifications

| | |
|--|--|
| Normal Density (Oven Dry) | 1200 kg/m ³ |
| Thermal Conductivity | ≤0.23 W/mk |
| Moisture Resistance | ≤9% |
| Reaction to Fire | BS EN 13501-1 Class A1 Non-Combustible |
| Biological Resistance | Highly Resistant |
| Surface Condition | Front Face - Smooth Back Face - Textured |
| Durability (Life Expectancy - minimum) | 30 years |
| Standard Board Sizes | 2400 x 1200mm |
| Board Thickness | 6mm, 9mm, 12mm, 15mm |
| Nominal Mass of Product (kg/m ²) | 7.2, 10.8, 14.4, 18 |
| Fire Reaction Tests | BS EN 13501-1:2018 Class A1 BS EN ISO 1716:2018 BS EN ISO 1182:2020 BS EN 1363-1 BS EN 1364-1 BS EN 1365-1 BS 476 Part 4 BS 476 part 22 fire rated through wall solutions |
| Physical Properties | BS EN ISO 12467 BS EN 594 Category 1 BS EN 594:2011 |
| Fixings - Steel Frame | FIX006 - 4.8mm x 38mm Wing tip self drilling fixing |
| Fixings - Timber Frame | FIX005 - 4.2mm x 42mm Climaseal self drilling fixing |