



A Guide to Building Boards

About Benx

From timber to steel frame, high to low rise, internal to external wall linings and buildings with high weather exposure, Benx offers a solution.



As a key UK cladding supplier, the Benx portfolio is continuously adapted in line with changing legislation, new material technologies and increasingly sophisticated building designs.

Furthermore, because we have developed a complete range of products and support services, we can offer you a palette of cladding products from sheathing boards, through support structures to façade finishes. A single-source “Golden Thread” for the life of the building.

Our aim is to increase variety and decrease your risk in choosing and designing building façades. We believe our approach is the future of façades.



Our Portfolio

Benx are unique as a designer and supplier of façade systems with a comprehensive portfolio. We offer the complete through-wall solution:

- Façades
- Sheathing board
- Support Frame
- Rainscreen Insulation
- Cavity Barriers
- Airtight Solutions
- Market leader in the supply of external wall insulation
- BrickSlip Solutions

Rainscreen Insulation

Cavity Barriers

Airtight Solutions

Support Frame

Façade Range

Sheathing Boards

<p>ywall Calcium Silicate/Fibre Cement A1 Non-Combustible BBA Approved</p>	<p>CEMBOARD Cement Bonded Particle Board Excellent Mechanical Strength Excellent Acoustic Properties</p>
<p>Multipurpose Cellulose Fibre Cement A Non-Combustible BBA Approved</p>	<p>DensGlass Fibreglass Mat with a Gypsum Core A1 Non-Combustible No.1 Specified Gypsum Sheathing Board in the US</p>

About RCM

Established in 2004, RCM is a major supplier of complete through wall solutions to the UK construction industry. Supplying specialist building boards, façades, breather membranes and airtightness solutions, RCM offers a fully integrated approach to the building envelope.

Through a unique and innovative portfolio of building materials, including both own brand and leading market brands, RCM has a solution for all building applications.

As a major UK supplier, RCM recognises the importance of providing quality certified products which have been rigorously tested to meet the demands of a challenging industry.

At our core, we supply a varied range of cement based building boards, offering a solution for all structural applications. From timber to steel frame, high to low rise, internal to external wall linings and buildings with high weather exposure, we offer a solution.



Our Building Board Range

Building Boards



Accessories

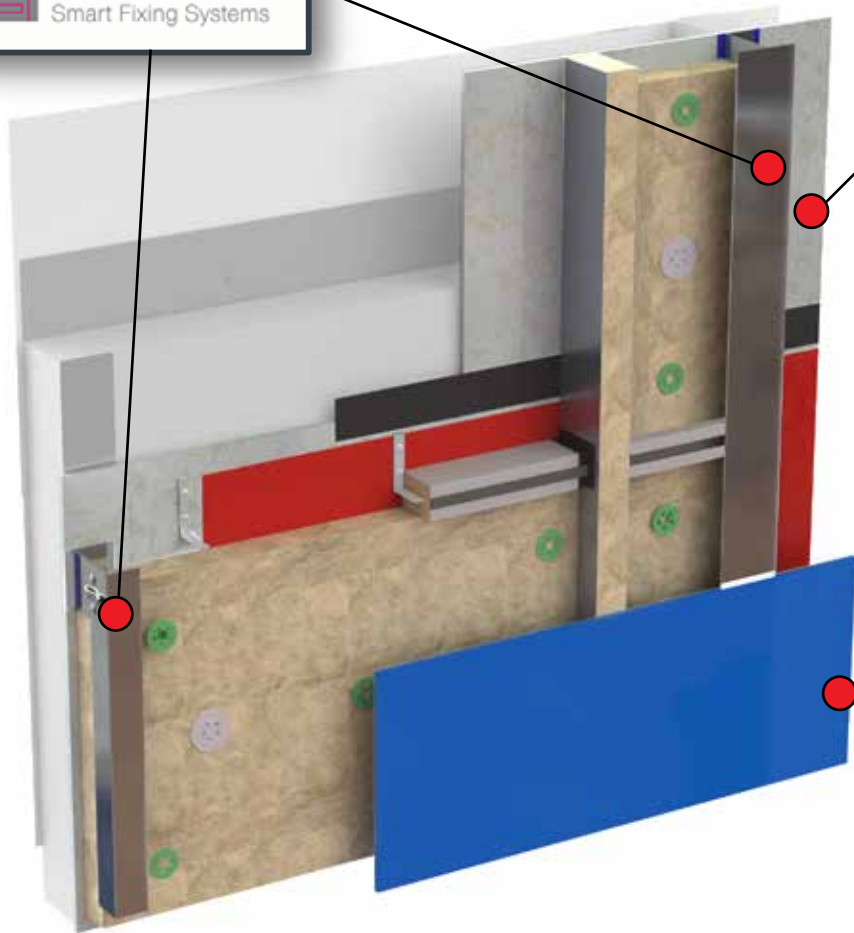


The RCM Through Wall Wall Solution

Support Frame



ALLFACE
Smart Fixing Systems



Sheathing Boards

ywall

Calcium Silicate/Fibre Cement
A1 Non-Combustible
BBA Approved

Multipurpose

Cellulose Fibre Cement
A Non-Combustible
BBA Approved

CEMBOARD

Cement Bonded Particle Board
Excellent Mechanical Strength
Excellent Acoustic Properties

DensGlass
sheathing

Fibreglass Mat with a Gypsum Core
A1 Non-Combustible
No.1 Specified Gypsum Sheathing Board in the US

Façade Range

ALUCOBOND

SWISS pearl

LUXE COAT

supertech

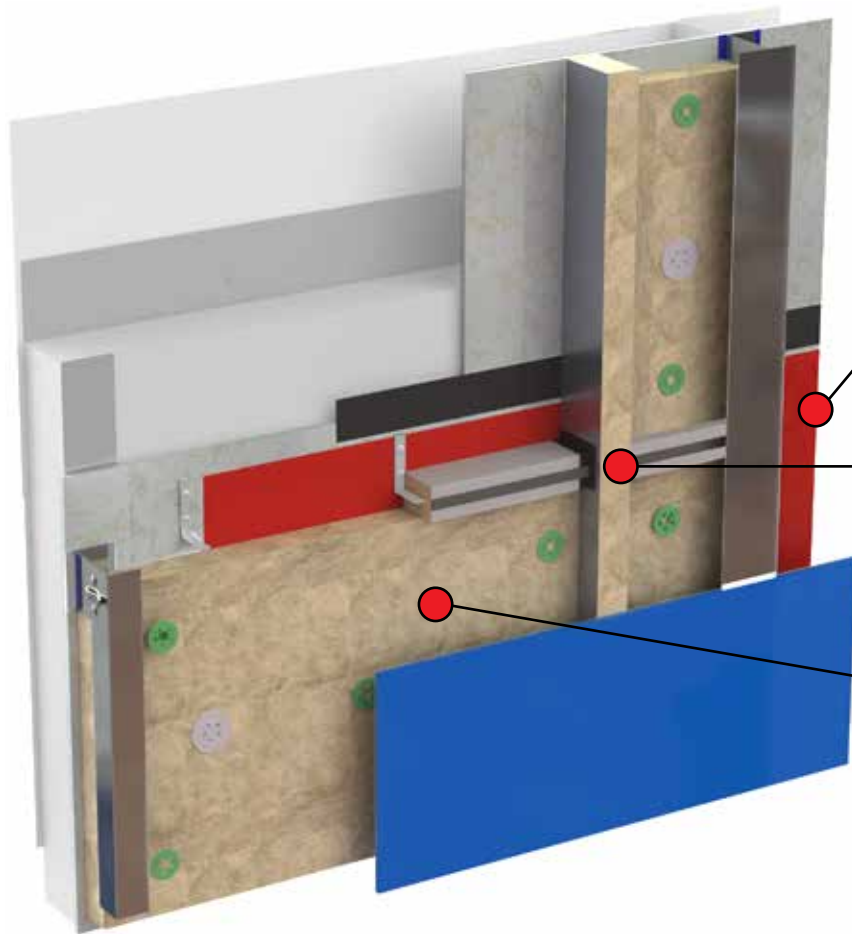
Rockpanel

LAPITEC
NATURALLY ITALIAN

RendaClad

vitradual

CS 1&2 Render
CS 1&2 Brick



Airtight Solutions

Proctor **DAFA** **illbruck**

Cavity Barriers

AIM **TENMAT** **Nullifire**
ADVANCED MATERIALS Smart Protection

Rainscreen Insulation

ROCKWOOL **KNAUF** **Kingspan**

Building Boards - Sheathing Range



Sheathing Range

Y-wall is a high-quality flexible calcium silicate based fibre cement building board, offering excellent fire properties as well as high levels of dimensional stability.

Features:

- Fire rated to EN 13501-1 class A1
- BBA approved
- Flexible and strong
- Excellent water resistance
- Easy to use
- High levels of dimensional stability
- Our lightest sheathing board with improved workability
- Recommended for buildings over 18m

Testing:

BS EN 13501-1 Class A1
BS EN ISO 1716:2010
BS EN ISO 1182:2010
BS 476 Part 4
BS 476 part 21 and BS 476 part 22 fire rated through wall solutions
BS EN ISO 12467
BS EN 594 Category 1
BS EN ISO 1015-11
BS EN ISO 1062-1



Cemboard is a rigid, medium density, high-performance cement bonded particle building board which offers great strength and stability with the workability of wood.

Features:

Fire rated to EN 13501-1 class B-s1, d0
High impact resistance
Good water resistance
Improved fire performance over timber
Great strength and stability
Improved strength and density for OEM applications
Excellent acoustic properties

Testing:

BS EN 13501-1:2007 - rated to B-s1, d0
BS EN 13823:2010
BS EN634 Part 1 & 2
BS EN 89/106/EC & EN 594
BS EN 13986
BS EN ISO 11925-2:2010
BS EN 1062-1

Building Boards - Sheathing Range



DensGlass Sheathing is a high performance sheathing board that consists of a fibreglass mat with a gypsum core, designed to provide a high degree of protection from the elements in external cladding constructions.

Features

- A1 non-combustible
- No1 Specified Gypsum sheathing board in the US
- 12 months exposure
- Lightweight
- Scribe & snap
- CE marked
- No breather membrane required
- Over 30 years in the market
- Manufacturing standard
- BS EN 15283-1:2008 + A1:2009

Testing:

BS EN 13501-1:2007 + A1:2009 Class A1 Non-Combustible
EN 1364-1:2015 or BS EN 1365-1:2012
Physical Properties
EN 15283



RCM Multipurpose is a highly versatile cellulose fibre cement building board, offering excellent strength, weathering and acoustic properties. It is available as building boards and soffit strips.

Features:

Fire rated to EN 13501-1 class A1
Exceptional racking strength EN 594:2011
High impact resistance
Excellent weathering properties
Wide range of thicknesses
Extensive range of applications
Range of soffit strips available
Recommended for buildings over 18m
BBA Approved

Testing:

BS EN 13501-1 Class A1 Non-Combustible
Category 1 fire rated through wall solution to BS 476 part 21 and BS 476 part 22.
BS EN ISO 1716:2010
BS EN ISO 1182:2010
EN ISO 12467
EN 594:2011 and BS 568-6.1



Render Carrier Borad



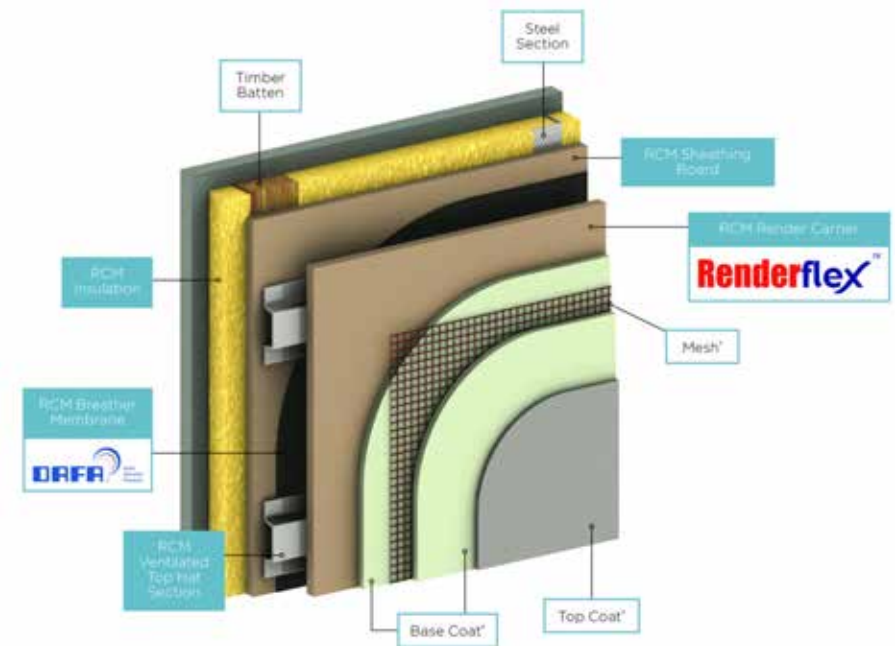
RCM Renderflex is a high-performance cellulose fibre cement building board, offering excellent strength, weathering and stability properties when used in conjunction with polymer renders.

Features:

- Fire rated to EN 13501-1 class A2-s1, d0
- High dimensional stability
- Excellent weathering properties prior to render application
- High impact resistance
- Maintains minimum board movement
- Reduced stress on rendered finish
- BBA Approved

Testing:

- BS EN 13501-1 Class A2 Limited combustibility
- BS EN ISO 1716:2010
- BS EN ISO 1182:2010
- BS EN 13823:2002
- BS 476 Parts 6 & 7
- BS EN ISO 12467:2004



General Building Boards



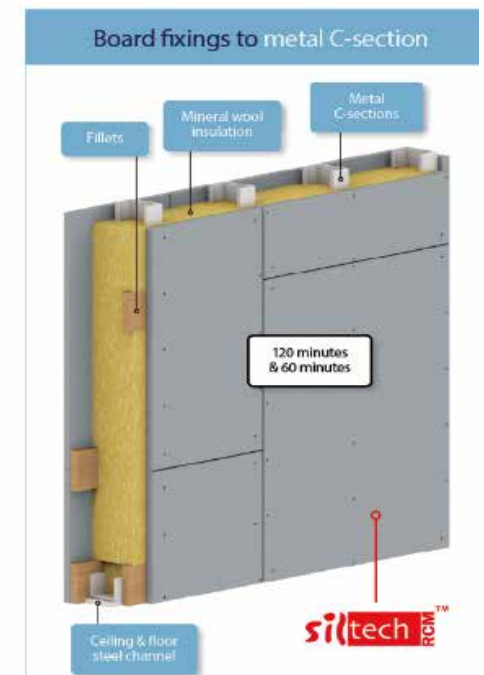
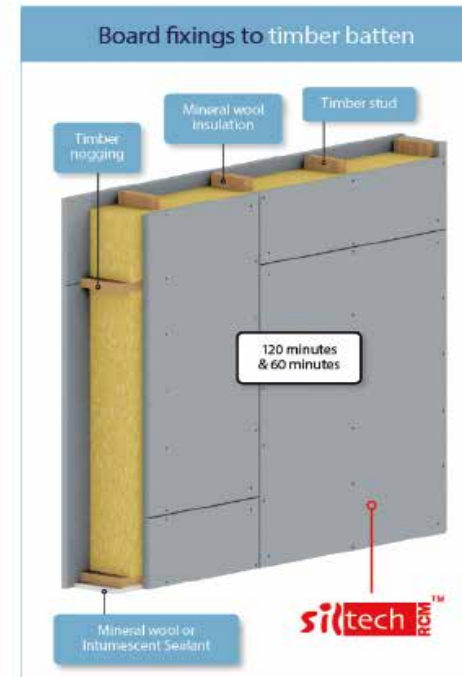
RCM Siltech is a non-combustible flexible calcium silicate building board which provides superior workability due to a unique fibre reinforced formulation.

Features:

- Fire rated to BS 476: part 4 non-combustible
- Highly flexible
- Dimensionally stable
- Extensive range of applications
- High levels of workability

Testing:

- Siltech has been tested by Exover for 60 and 120 minute partitions
- BS 476 Part 4 Non-Combustible
- BS 476 part 21 and BS 476 part 22 fire rated through wall solutions



Insulated Soffit Liner



RCM Caltech is an adhesively bonded soffit lined combining a non-combustible calcium silicate board (Siltech or Multipurpose), typically 6mm thick, with an insulation medium or either mineral wool, EPS or Phenolic.

Features:

- Long term durable bond
- Impact resistant boards from 3.2mm up to 12mm
- Extensive range of options
- 4 insulation mediums available

Testing:

As Caltech is a bespoke product produced to meet the U value requirements of a project, there are two board options. Please visit the relevant sections for more information.



Airtightness Solutions



DAFA develop, manufacture and deliver a wide range of sealing, absorption and protection products for the construction sector and industry. Their wide range of products for creating airtight building envelopes include

Breather membranes - (Windfoil)

2. EPDM Weather Resistant Seals

3. Vapour Control Layer (VCL) Tape ranges.

JOINT SEAL

RCM Joint Seal is a fully tested air tightness seal. It has been designed to create an air tightness seal on our external sheathing board range. RCM Joint Seal can also be used independently of RCM products.



A neutral cure silicon sealant used to seal movement joints, providing up to 4 hours fire protection while allowing a movement accommodation factor of 50%.



Ancillaries

Fixings for building boards

RCM Supply three key types of fixing RCM supply for installing building boards:

32mm self-drilling countersunk head, zinc coated screw - Recommended for Supertech weatherboard.

42mm self-drilling countersunk head, zinc coated, 500hr screw - Recommended for all boards and weatherboard into timber frame.

38mm counter sunk wing tip self-drilling tek screw, zinc coated - Recommended for Cemboard, Multipurpose and Y-wall into metal frame



Case Study

Rathbone Market

Designed by Project Orange

Build type: Steel frame

Products supplied:

9mm Y-wall sheathing board

10, 12 and 18mm Cemboard sheathing board

Joint seal

Façade framing - aluminium support frame

Façade - Rimex composite panel and stainless steel cladding

Fixings

Fabricated panels

Third phase of a significant regeneration project in Canning Town.

216 new homes.

Project commended in the Sunday Times British Homes Awards



Case Study

Holiday Inn Express

Designed by KKA Architecture

Build type: Modular precast concrete

Products supplied:

Vitrabond façade (Aluminium composite panels)

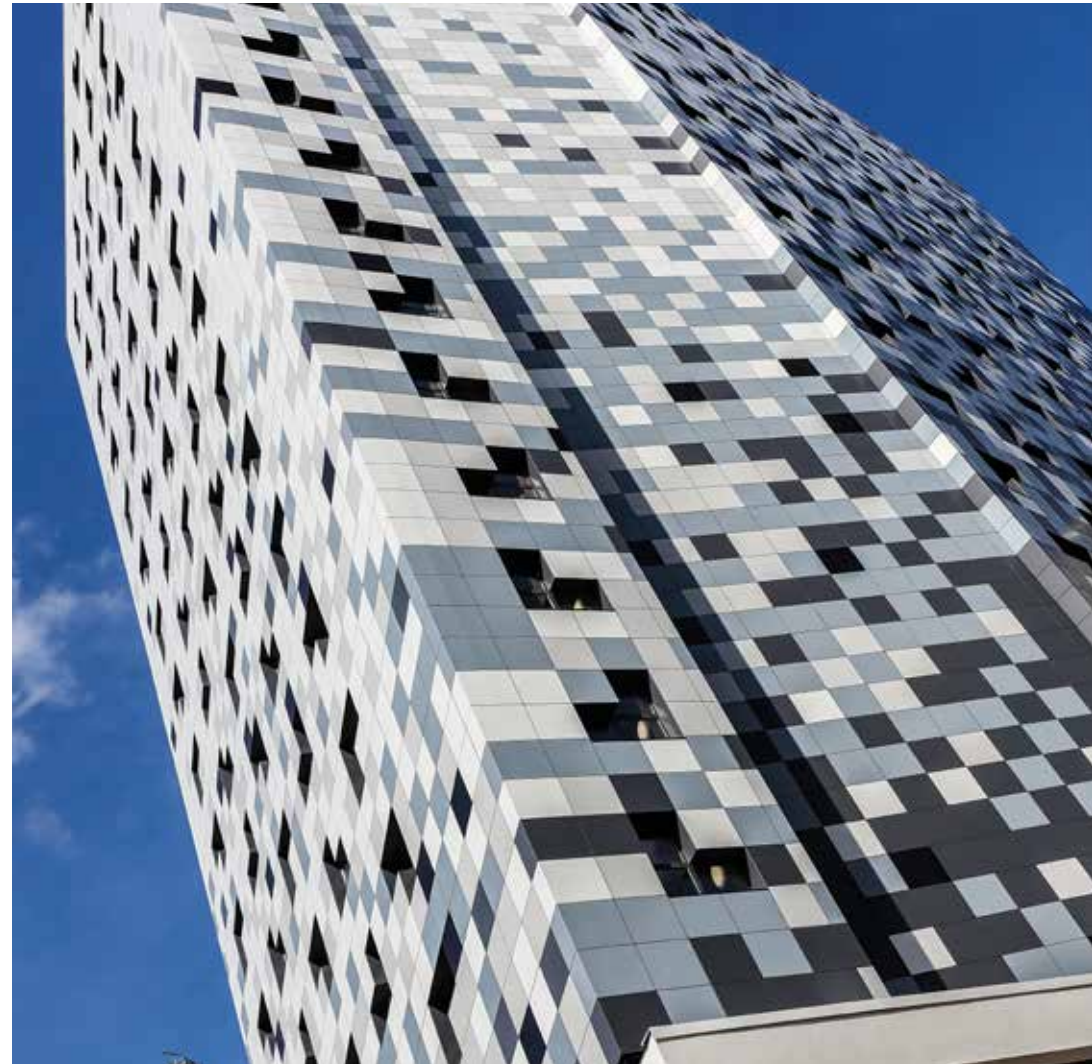
Trespa Meteon façade (High pressure laminate)

Fixings

Façade framing - aluminium support frame

Fabrication of all panels to correct size and supplied in order required to achieve design

250 bedroom, 17 storey hotel in the centre of Birmingham



Case Study

Riverlight

Designed by PHP Architects

Client: Galliford Try

Build type: Modular/Offsite

Products supplied:

Y-wall sheathing board

Trespa Meteon façade (High pressure laminate)

Fixings

Façade framing - aluminium support frame

Fabricated panels

A high value apartment block within the Riverlight project based on the South Bank of the River Thames, London.



Facades

Facades

Aluminium Composite Material - **ALUCOBOND**  **LAPITEC**
NATURALLY ITALIAN

Through Colour Fibre Cement Board - **SWISS pearl.**

Weatherboard -  **Rockpanel** **supertech**

Aluminium Support Frame -  **ALLFACE**
Smart Fixing Systems

Solid Aluminium -  **vitradual**
Non-Combustible Cladding  **LUXE COAT**

Considerations in choosing features:

- ✓ Weather resistant
- ✓ High impact resistance
- ✓ Colour stability
- ✓ Moisture resistant
- ✓ Reaction to fire
- ✓ Easy to keep clean
- ✓ UV resistance
- ✓ Environmentally friendly
- ✓ Product guarantee



Fabrication Facilities

Our brand portfolio encompassing leading world renowned façade brands as well as own brand options allows us to supply innovative and design led external cladding solutions.

A fully integrated fabrication service allows customers to order both building boards and façades to exact size in order to reduce construction cutting time, minimise wastage and improve environmental impact. Machining also enhances the accuracy and consistency of the manufacturing process.

Our highly experienced technical support team provide a comprehensive technical service as standard. We are able to supply customers with bespoke sized buildings boards and facades to meet specific project requirements direct to site. From a supplied panel list we can optimise required panels against standard sheet sizes available to provide the most efficient use of the material.

We are able to cut, shape, drill, slot, bevel, bull nose and finish to most specifications. We can also fabricate and assemble ACM cassette systems, data sheets and colour samples.



Thank you for taking the time to review our Building Boards brochure.
If you require any further information on our products or services, please contact us.

Sales  0800 612 4662  sales@benx.co.uk

Technical  0800 488 0531  technicalservices@benx.co.uk  www.benx.co.uk



Disclaimer

By using or accessing the brochure, you agree with the following Disclaimer. Benx Limited ('the Company') reserves the right to terminate, revoke, modify, alter, add and delete any of the information in the brochure. The Company shall be under no obligation to notify the user of the amendment to the contents of the brochure. Computer generated images, walkthroughs and render images used on this brochure are the artist's impression and are an indicative of the actual designs

The information in this brochure is presented as general information and no representation or warranty is expressly or impliedly given as to its accuracy, completeness or correctness. It does not constitute part of a legal offer or contract. While every effort has been made to ensure its accuracy, this brochure may unintentionally include inaccuracies or errors. The user must verify all the details and specifications independently with the Company prior to concluding any decision to purchase or use the Company's products.

In no event shall the Company be liable to the user or any third party for damages, losses and causes of action (including but not limited to negligence), errors, injury, whether direct, indirect, consequential or incidental, suffered or incurred by any person/s or due to any use and/or inability to use this brochure or information, action taken or abstained through this brochure. While every effort has been made by the Company to ensure that information in the brochure is up to date, accurate and correct, the users are requested to make their independent enquiry before relying upon the same.