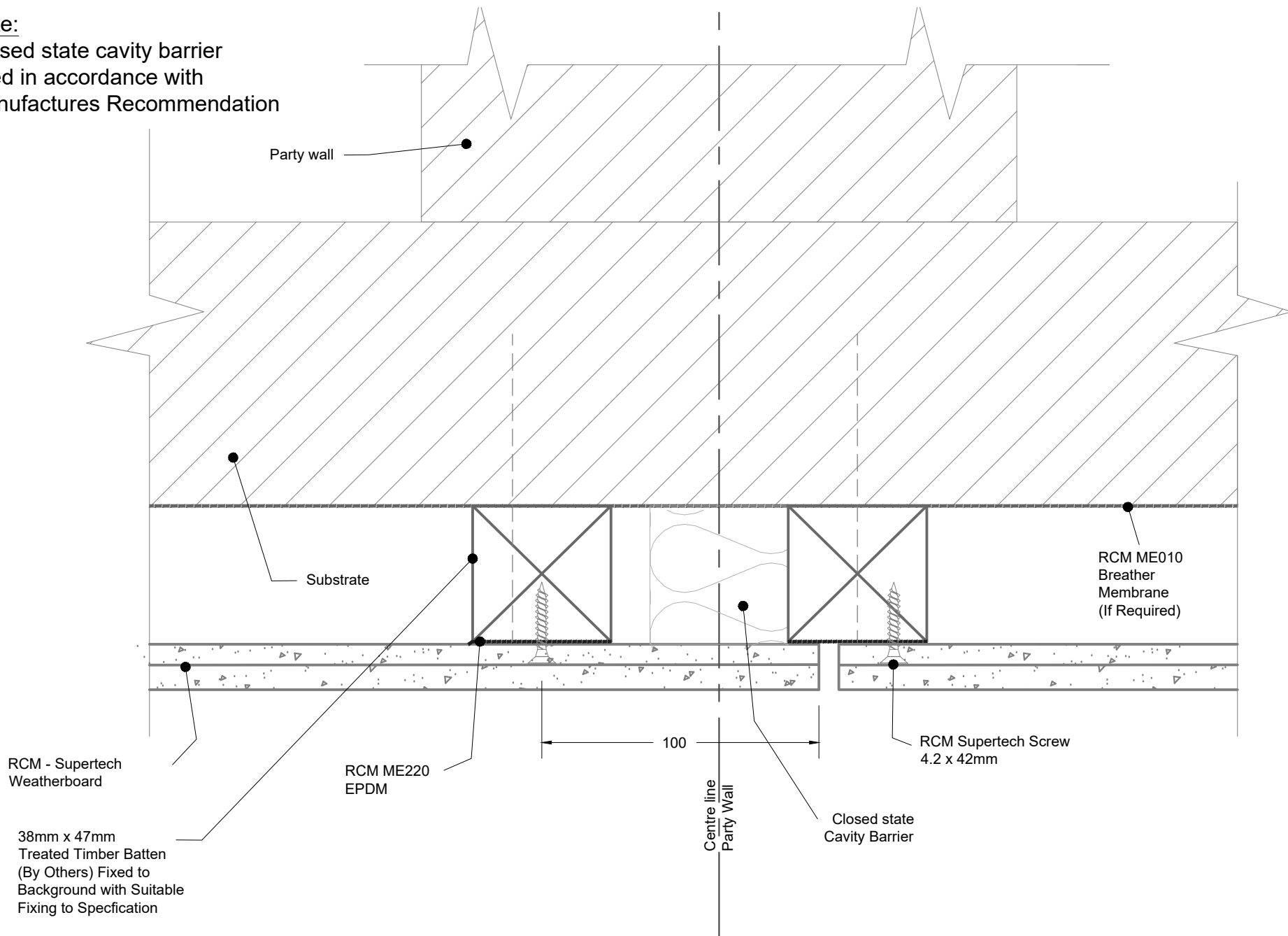


**Note:**  
 Closed state cavity barrier  
 fixed in accordance with  
 Manufactures Recommendation



Unit 25 - 27,  
 Rosevale Rd,  
 Parkhouse Ind Est West,  
 Newcastle-under-Lyme,  
 Staffordshire,  
 ST5 7EF,  
 Telephone: 0800 612 4662  
 Email: info@rcmltd.biz

PROJECT:  
 RCM

ISO No:  
 0000

DRAWING ID:  
 PROJ020 - 0010

DESCRIPTION: Timber Batten-NHBC Recommendation  
 Party wall with expansion joint

DRAWN/DM	REV	DATE	NOTE
CHECK: JB	001	04/21	First Release
A4@NTS			
DATE: 04/21			

BY DM

All performance data & systems specifications are for systems constructed with materials & components as shown. The inclusion or substitution of any other manufactures materials or components invalidates both test data, system performance and compliance with CDM 2015. The information is provided and based upon details received which are assumed to include all the relevant facts and data. While it is believed to be correct, we accept no liability for its accuracy, adequacy or completeness. Recipients must satisfy themselves as to its suitability as we do not accept responsibility for any claims or consequential loss. Acceptance of the content and subsequent design responsibility rests entirely with the recipients. Any subsequent design changes that affect the detail which we are not informed of, in a written format will void this detail. None of the content may be copied without the prior approval from the Benx Group Technical Services Department. This statement should be read in conjunction with the standard terms and conditions of Benx Group.