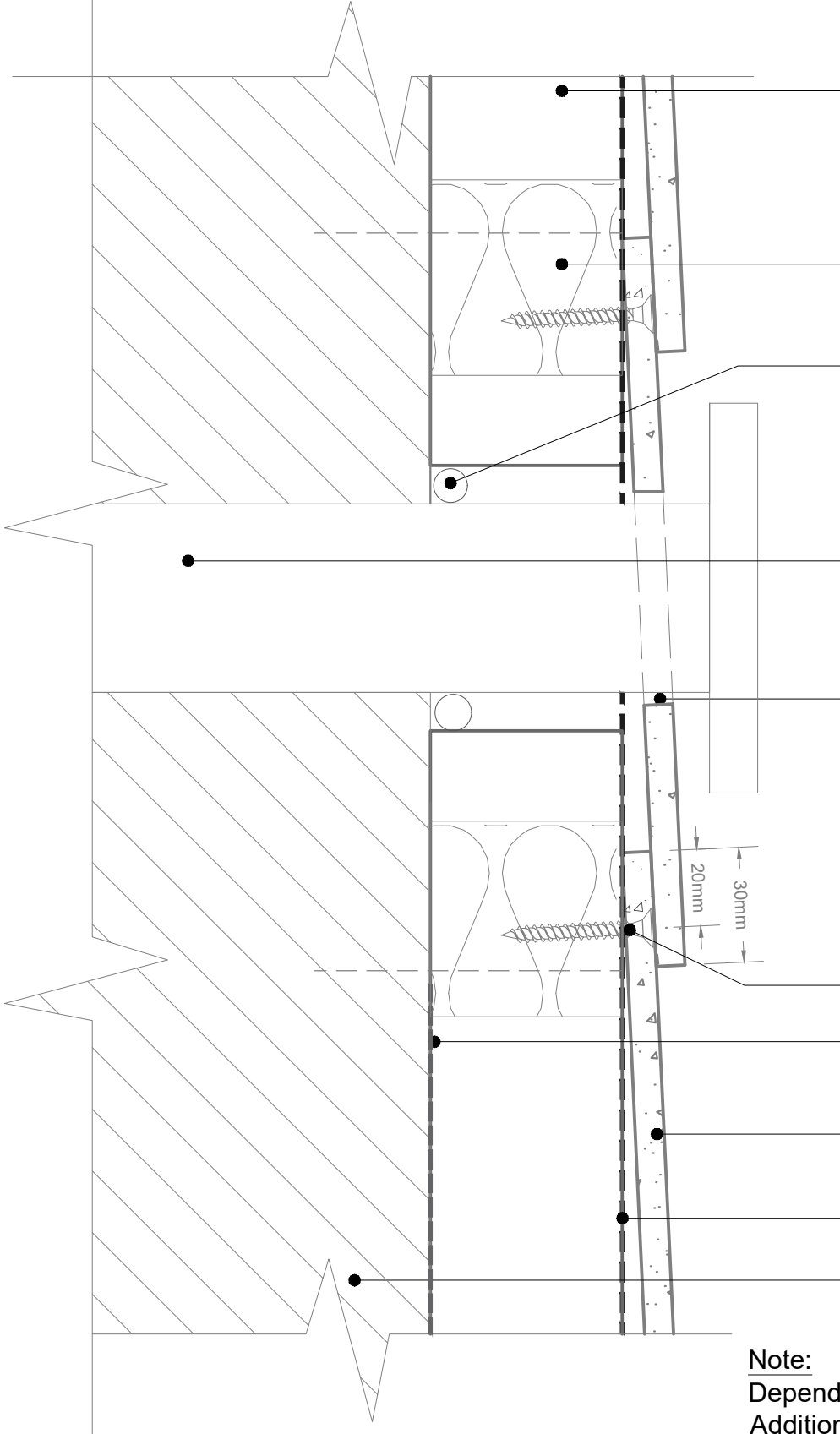


Note 1:
 Closed State Fire Cavity
 Barrier Fixed to Manufactures
 Recommendation

Note 2:
 Closed State Fire Cavity
 Barrier To All Sides Of
 Penetration



38mm x 47mm
 Treated Timber Batten
 (By Others) Fixed to
 Background with Suitable Fixing to
 Specification

Closed State Fire Cavity
 Barrier To All Sides
 Of Penetration

External Sealant
 Mastic Bead
 (By Others)

Boiler flue, extract fan or similar
 penetration (By Other)

Nominal 5mm gap around
 penetrations to allow for
 movement

RCM Supertech Screw
 4.2 x 42mm

RCM ME010
 Breather Membrane
 (If Required)

RCM - Supertech
 Weatherboard

RCM ME220
 EPDM

Substrate

Note:
 Dependant on size and location of duct
 Additional RCM Decorative Screw
 (colour matched) required to locate RCM
 Supertech



Unit 25 - 27
 Rosevale Rd,
 Parkhouse Ind Est West,
 Newcastle-under-Lyme,
 Staffordshire,
 ST5 7EF,
 Telephone: 0800 612 4662
 Email: info@rcmltd.biz

PROJECT: RCM	ISO No: 0000	DRAWN: DM	REV	DATE	NOTE	BY
DRAWING ID: PROJ020-0008		CHECK: JB	001	11/04/21	First Release	D.M
DESCRIPTION: Timber Batten NHBC Recommendation Fire Barrier around Penetration		A4@NTS				
		DATE: 09/04/21				

All performance data & systems specifications are for systems constructed with materials & components as shown. The inclusion or substitution of any other manufacturers materials or components invalidates both test data, system performance and compliance with CDM 2015. The information is provided and based upon details received which are assumed to include all the relevant facts and data. While it is believed to be correct, we accept no liability for its accuracy, adequacy or completeness. Recipients must satisfy themselves as to its suitability as we do not accept responsibility for any claims or consequential loss. Acceptance of the content and subsequent design responsibility rests entirely with the recipients. Any subsequent design changes that affect the detail which we are not informed of in a written format will void this detail. None of the content may be copied without the prior approval from the Benx Group Technical Services Department. This statement should be read in conjunction with the standard terms and conditions of Benx Group.