

RCM Decorative screw  
(Colour Matched)  
SULP/SD5.5x35/S

Batten Fixing to  
Background with  
Suitable Fixing to  
Specification

RCM - Supertech  
Weatherboard

38mm x 47mm  
Treated Timber Batten  
(By Others)

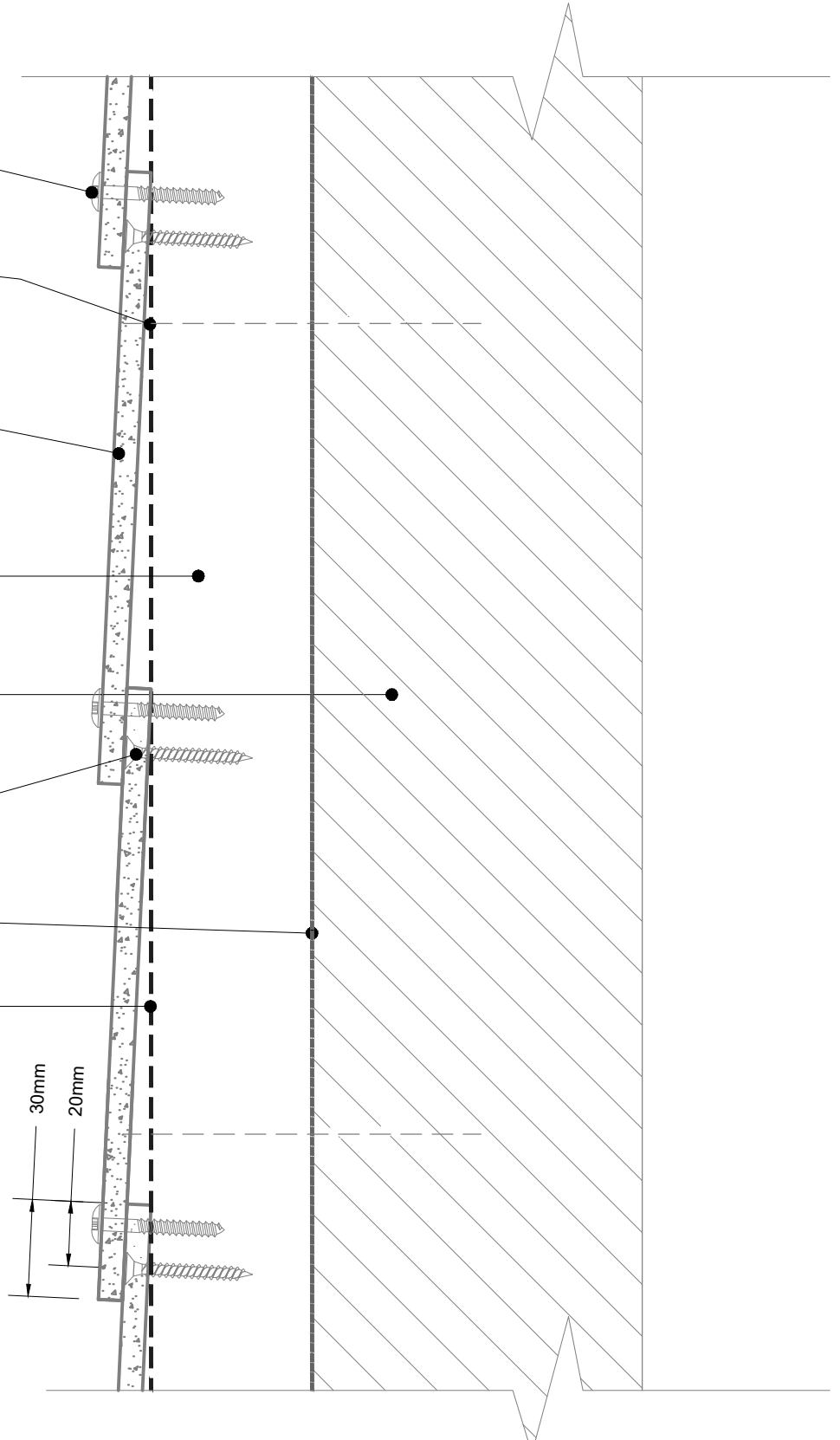
Substrate

RCM 4.2 x 42mm  
Screw

RCM MEO10  
Breathable Membrane  
(IF Required)

RCM ME220 EPDM

30mm  
20mm



**Note:**

Use Stainless Steel Fixings  
In Coastal Areas



Unit 25 - 27  
Rosevale Rd,  
Parkhouse Ind Est West,  
Newcastle-under-Lyme,  
Staffordshire,  
ST5 7EF,  
Telephone: 0800 612 4662  
Email: info@rcmltd.biz

PROJECT: RCM	ISO No: 0000	DRAWN: DM	REV	DATE	NOTE	BY
DRAWING ID: PROJ020-0012		CHECK: JB	001	11/04/21	First Release	D.M
DESCRIPTION: Timber Batten Non NHBC Supertech - Coastal Or High Wind Areas		A4@NTS				
		DATE: 09/04/21				

All performance data & systems specifications are for systems constructed with materials & components as shown. The inclusion or substitution of any other manufactures materials or components invalidates both test data, system performance and compliance with CDM 2015. The information is provided and based upon details received which are assumed to include all the relevant facts and data. While it is believed to be correct, we accept no liability for its accuracy, adequacy or completeness. Recipients must satisfy themselves as to its suitability as we do not accept responsibility for any claims or consequential loss. Acceptance of the content and subsequent design responsibility rests entirely with the recipient. Any subsequent design changes that affect the detail which we are not informed of in a written format will void this detail. None of the content may be copied without the prior approval from the Benx Group Technical Services Department. This statement should be read in conjunction with the standard terms and conditions of Benx Group.