

# Reduce Risk. Eliminate Complexity.

Façade Systems for Offsite Construction



# Unlocking offsite's potential

Navigating the complexities of offsite construction can be challenging. Whether you're a fully-fledged volumetric manufacturer, or simply seeking to reduce site activity, our unique range of certified systems will help you to achieve the best results.



Reproduced with kind permission of Volumetric Ltd

## Less risk

We aim to reduce risk and uncertainty wherever possible. Our rigorous independent testing and certification process leaves nothing to chance. By specifying our fully-tested and certified 'through-wall' systems, you can rest assured that you are making the right choice.

## Design freedom

Our comprehensive range of systems and vast palette of colours and finishes offers maximum design flexibility - allowing you to create high performance building façades with strong visual impact.

## We make it simple

Our certified architectural façade systems take the headache out of specifying and procuring multiple components - so you can focus on what you do best.

## Your flexible partner

We are constantly looking for ways we can enhance the way we support our customers. Our fabrication service allows you to achieve precise tolerances without having to deal with third parties. We will deliver to your factory or site, in your preferred configuration.

## Sustainability in mind

As a longstanding supplier of insulated façade (EWI) systems, we understand the critical importance of carbon reduction. And we know there is a long way to go before we are truly sustainable but we are constantly exploring ways to reduce our own carbon footprint.

## Whole life economics

Our systems are developed with all life cycle costs in mind - from manufacture to maintenance. That way, we can deliver the best possible return on investment.

## Contents

Trust built on innovation and quality	4
A simplified approach to specifications	6
With you every step of the way	8
A world of possibilities	10
RendaClad® rainscreen cladding system	12
SLIPFAST® Mechanical brick slip system	14
External wall insulation (EWI) cavity systems	16
Supertech™ Weatherboard System	18
Swisspearl™ fibre cement system	20
Rockpanel™ rock fibre system	22
Luxe Coat aluminium façade system	24
Products for offsite construction	26
Case Studies	28
The Benx portfolio at a glance	30

# Trust built on innovation and quality

Our success has been built on decades of rigorous testing, technical know-how and innovation. But we are never satisfied. We will always strive for safer, more cost-effective, sustainable façade solutions. This continuous evolution allows us to ensure we can offer the best systems on the market.

## Certifications and more...

Our products and systems are backed by one of the strongest portfolios of certifications and accreditations in the façades industry. In addition to BBA and KIWA BDA Agréments, some of our systems are also accredited by BOPAS and NHBC. With these accolades, you can be sure that our façade systems have been independently verified and they are fit for purpose.

## Inspired Thinking...

When we develop a new system, we start by understanding the needs and objectives of all stakeholders - most importantly our customers. We then create concepts and prototypes drawing on expertise from right across our business. We leave no stone unturned in the pursuit of the best possible solutions. We also work with our supply partners to make sure we have the benefit of their latest component innovations. Through our collaborative approach, we help you to create outstanding buildings with stunning façades.

## Sum of the parts...

A system is only as good as its constituent parts. We source the best components from our extensive global supply chain, only selecting proven materials from resilient suppliers. Independent factory audits ensure that appropriate quality standards are met consistently. Because we focus on each component as well as the overall result, you can be sure that our systems are the sum of the best possible parts. Where possible UK manufacturing and lower carbon footprint focus very highly in our selection process.

## Testing, testing...

Rigorous testing lies at the heart of our product development process. By independently testing our products and systems, we can be sure that they meet the highest standards of safety and durability. We pay particular attention to fire safety and many of our products and systems are A1-rated (non-combustible).

Working with leading independent test houses, we also test for strength and stability, thermal insulation, resistance to moisture and durability.



# Specification Simplified

Our 'whole system' philosophy focus helps to remove uncertainty and complexity from your specification process

## A pioneering approach

As a longstanding leader in external wall insulation systems we have been testing and certifying complete systems for decades. We are among the first to have adopted the same holistic approach for rainscreen cladding systems.

## Safety first

We are acutely aware of the crucial place of safety in the specification decision. That's why our façade systems are fully tested and certified where possible as 'through-wall' solutions. This approach confirms that the individually tested components offer the required safety performance in a system configuration.

In certifying through wall solutions, certain elements such as cavity barriers are complex to include currently, due to competing test standards. However we believe we are at the forefront of discussions with agrément bodies and test houses to define a holistic approach for through wall and can assist our clients through this process.

## We make it easier

We fully appreciate the challenges of creating specifications in today's world. You need to know that the elements of a complex system work together to create a safe and effective solution. When you specify one of our certified façade systems you can rest assured that we have done the hard work for you by testing and certifying the complete solution.

## It's your choice

Our range of certified façade systems has been developed to meet the needs of different construction types for new build, retrofit or recladding applications. Most are suitable for both offsite and traditional site based installation processes. Our range of colours and finishes offers complete design flexibility, whatever the building type and whatever the setting.

[benx.co.uk](http://benx.co.uk) | 0845 519 8641

# With you every step of the way

Our collaborative approach is designed around you

## The earlier the better

Engaging at the planning stage, we work closely with your team to ensure you get the right solution for your project. Our technical specialists will make sure you have the information and guidance you need to create outstanding façade systems.

## Clear and often

Our team members will interface with yours to ensure the right people are talking to each other at the right times. In addition, our unique Customer Portal helps to track documents and workflows throughout the process, creating a permanent record of information exchanged and key approvals and decisions.

## Tailored to your needs

Through our bespoke fabrication and coating service, we can provide products and systems to your exact

requirements. Operating from a dedicated facility in Staffordshire, our fabrications team can cut, groove, drill and coat products to your particular specification. We can also deliver in a variety of formats to suit your needs.

## Scheduled visits

For larger projects, we offer a scheduled programme of site or factory visits to inspect the installation, providing expert insight into the façade application. We also offer installation training to ensure factory personnel and site installers are familiar with our systems.

## Solving problems

As we all know from experience, despite best efforts, things can occasionally go wrong. Our technical specialists are available to assist with any ad-hoc issues that may arise, and can be with you quickly to ensure the minimum loss of valuable build time.



# A world of possibilities

## Uncompromised Design and Specification Flexibility

With a façade system for virtually every scenario and a vast array of colours and finishes to choose from, we can help you create truly iconic buildings.

### RendaClad® System ▶

A seamless rendered or brick slip rainscreen system on to LSF or timber framed structures. Increasing the speed of construction, it reduces the building footprint, and delivers many of the benefits of modern methods of construction.



### Rockpanel™ System ▶

Manufactured using compressed natural basalt (a readily available volcanic rock) bonded together with an organic binder, Rockpanel façades are sustainable and environmentally friendly. The boards are finished with a 4 layer water-based coating to seal in the appearance and colour to provide a lasting finish.



### ◀ SLIPFAST® Mechanically-Fixed Brick Slip System

A fast track, mechanically fixed clay brick slip system, designed for offsite, modular and site-based construction. Highly versatile, lightweight yet strong, real brick cladding system offering many cost and time-saving benefits. The brick carrier system is supplied direct with pre-installed rails, ready to receive pre-formed clay brick-slips, which are then pointed and sealed on site (no adhesive needed).



### ◀ Supertech™ Weatherboard System

Fully-ventilated rainscreen cladding system which has an appearance of traditional timber cladding but the durability and strength of cellulose fibre cement.

### Cavity Systems 1 & 2 ▶

Highly-durable and weather-resistant insulated cladding systems, typically used on lightweight steel framed structures to create a void between the cladding and the sheathed framed structure. Available in a render or brick slip (both mineral and acrylic) façade finish.



### Luxe Coat Aluminium Façade ▶ System

Through-wall system with coloured solid aluminium panels. It's light weight and high strength-to-weight ratio make it a valuable asset, while its fire reaction and insulating properties help provide safety and energy efficiency.



### ◀ Swisspearl™ System

Swisspearl coloured fibre cement panels give façades individuality, character, texture, colour and, very importantly, a highly effective protective layer.

Allowing an immense range of possibilities, with an extensive selection of surface options, various types of joints and fastenings, and panel formats.



# RendaClad® Rainscreen Cladding System



A seamless rendered or brick slip rainscreen system for LSF or timber framed construction.

## System Benefits

### Safety and Performance

- BBA Certification (Timber and top hat)
- BOPAS Accreditation
- CWCT tested incorporating Benx associated products including Allface Support frame
- All key components A2 – s1, d0 or better

### Economics and Speed of Installation

- Fast method of construction, reducing preliminaries per plot
- Significant size footprint savings per elevation

### Durability

- 30 and 60 year minimum design life options available
- Long-term durability and high-resistance to dirt
- Resists algal spoiling
- High resistance to cracking and delamination

### Versatility

- Choice of renders, brick and stone slip options

### Carbon Footprint

- Overall weight lower than most competing systems
- Less storage required onsite

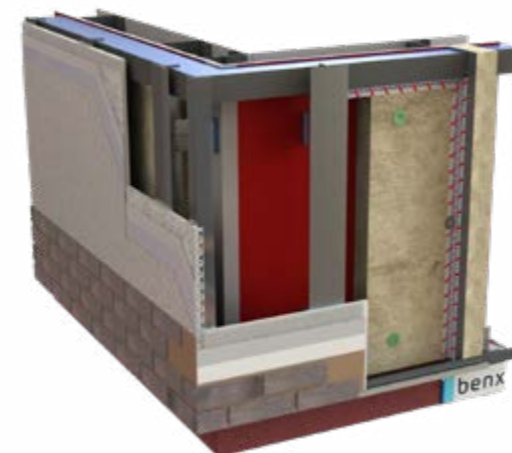
## A flexible system configuration for a range of construction methods



RendaClad System on  
Timber Battens



RendaClad System on  
Top Hat Sections



RendaClad System on  
Allface Mounting  
System

## Finishes and colours\*

### Silicone or mineral top-coat



### SpeedySlip or SLIPFAST®



\* This is just a small selection of the wide range available.



# SLIPFAST® Mechanical brick slip system



'A' Fire Rated, fast track,  
mechanically fixed clay  
brick slip system.



## System Benefits

### Safety and Performance

- A1 and A2 fire-rated options available
- CWCT and KIWA certified
- Non-Adhesive system with excellent wind loading performance

### Cost and Speed of Installation

- Innovative 'rail and clip' system has lower material content than competing products
- Faster to install than rival systems, reducing labour cos.
- Minimal skill level required for slip application
- Brick slip application not weather dependent
- Light weight improves handling efficiency

### Durability

- Certified system life of in excess of 60 years
- Core mechanical components stainless steel as standard
- High level of impact resistance
- Suitable for coastal environments without modification

### Versatility

- Suitable for both onsite and offsite applications
- Allows different support frames
- Easily manipulated for detailing
- Multiple panel sizes available

### Carbon Footprint

- Overall weight lower than most competing systems
- Majority of key components UK manufactured including brick slips
- Slip-firing process minimises embodied carbon

SLIPFAST® incorporates an innovative 'rail-and-clip' system which delivers a step change in installation efficiency, without compromising performance or aesthetics.

### System 1 Timber battens or galvanised steel top-hat profiles

Our flexible design means that not all timber battens are required to be fixed back to the primary structure.

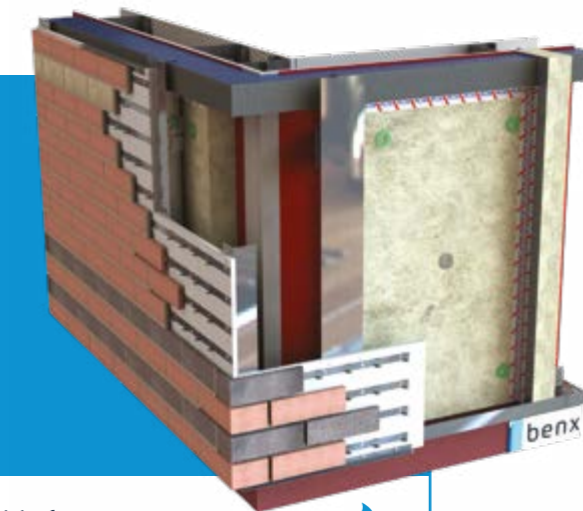


A2 Fire rated - suitable for buildings up to 18 metres.



### System 2 Allface aluminium support frame

Allface support frame fixed back to primary studs at maximum 600 mm centres.



A1 Fire rated - suitable for buildings up to and over 18 metres.



### Certified as complete systems

SLIPFAST® façade systems are tested to A1 and A2 fire resistance standards. The systems' carefully selected components have been rigorously tested, both individually and as entire systems, making SLIPFAST® among the very few KIWA or BBA certified systems of their type. Our rigorous testing and certification process ensures long-term performance and lasting appeal.

## Finishes and colours\*



Other colours and textures are available, dependent on project size

\*Colour swatches have been reproduced as accurately as possible; however there may be some variations due to technical, colour reproduction and render manufacture reasons.

If you require an accurate swatch, please ensure you ask us for a sample of the product and colour chosen prior to commencing any works.



# EWI Cavity and Direct Fix Systems



Certified external wall insulation systems for use up to and over 18 metres.



benx.co.uk | 0845 519 8641

## System Benefits

### Safety and Performance

- Kiwa BDA or BBA agrément system certification
- Accepted by all building warranty providers
- Minimum EuroClass reaction to fire classification of A2 – s1, d0 (Based on Mineral wool insulation)
- EuroClass A1 support system

### Cost and Speed of Installation

- Competitively-priced cladding solution
- Fast application

### Versatility

- Wide range of colours and finishes, including brick slips

### Efficient

- Easily achieves high levels of thermal performance

### Long Lasting

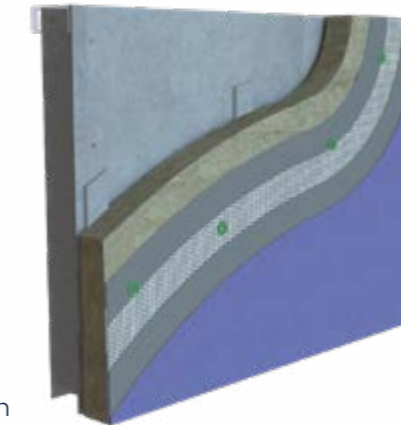
- Highly durable and weather resistant

## A popular choice for lightweight framed structures typically used in offsite construction.

Our market-leading Cavity Systems consist of Euroclass BS EN 13501 – A1 components, which are mechanically fixed back to the inner sheathing board to create the designed cavity width. The insulation board is either fitted directly with either the insulation board fitted directly to the A1 fillets (CS1 system), or a secondary A1 sheathing board and insulation (CS2 system). Our A1 EWI cavity systems are supplied with either a silicone or mineral top coat finish, or brick slips. Our direct fix systems fit directly back to sheathing board.

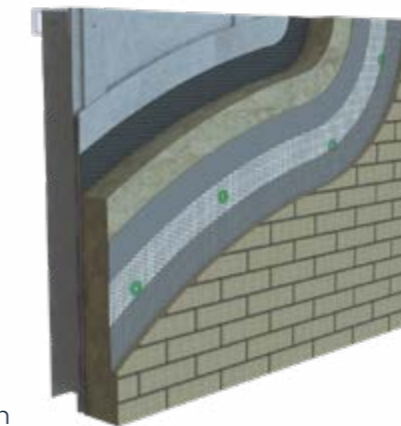
### Cavity System: CS1

- Minimum 15mm cavity using SPSEnvirowall Cavity System A1 fillets
- Breather membrane optional
- Mineral wool insulation fitted to A1 fillets
- Base coat incorporating plastic glass fibre reinforcing mesh
- Textured top coat or brick slip finish



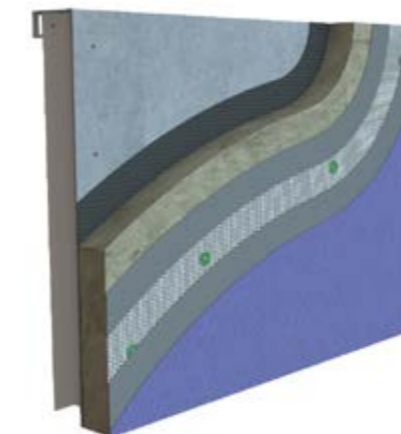
### Cavity System: CS2

- Minimum 15mm cavity using SPSEnvirowall Cavity System A1 fillets
- Breather membrane optional
- Mineral Wool Insulation mechanically fixed to CS2 secondary sheathing board
- Base coat incorporating plastic glass fibre reinforcing mesh
- Textured top coat or brick slip finish



### Wall System 1 Direct Fix

- Insulation directly fixed to sheathing board
- Can incorporate mineral wall insulation or expanded polystyrene. Not A rated onto EPS.
- Breather membrane optional.
- Textured top coat or brick slip finish



## Finishes and colours\*

### Silicone or mineral top-coat



### SpeedySlip or SLIPFAST®



\* This is just a small selection of the wide range available.

# Supertech™ Weather board System



Create truly stunning  
façades with our fibre  
reinforced cement  
weatherboard system.



benx.co.uk | 0845 519 8641

## System Benefits

### Safety / Performance

- A1 Fire Classification  
BS EN 13501-1: 2018.
- BBA Certified System – 19/5708

### Key applications

- Ventilated rainscreen cladding
- Over-cladding for existing buildings
- New build façades
- Feature detailing
- Sheds and summer houses

### Key features

- Easy to install and lightweight
- Range of colour matching  
aluminium trims available
- Low maintenance, long  
performance life
- Excellent appearance without the  
imperfections seen in timber

### Cutting and workability

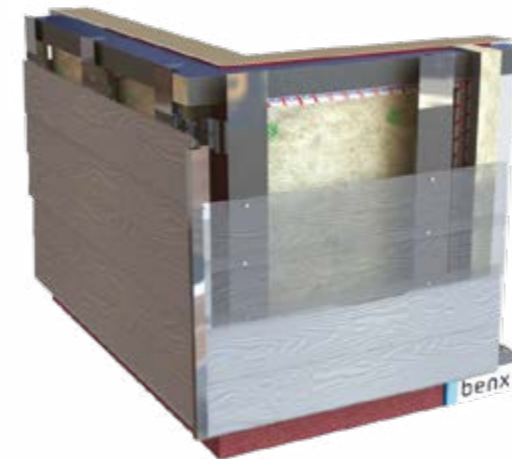
Supertech is lightweight and easy to install. The weatherboard can be cut, drilled and nailed with conventional woodworking tools in a similar fashion to timber.

For cutting the product in any volume, we recommend the use of an RCM polycrystalline diamond Dart Blade to avoid excessive wear on other blades.

We offer a complete fabrication service (please contact us for details).

## Designed to stand the test of time

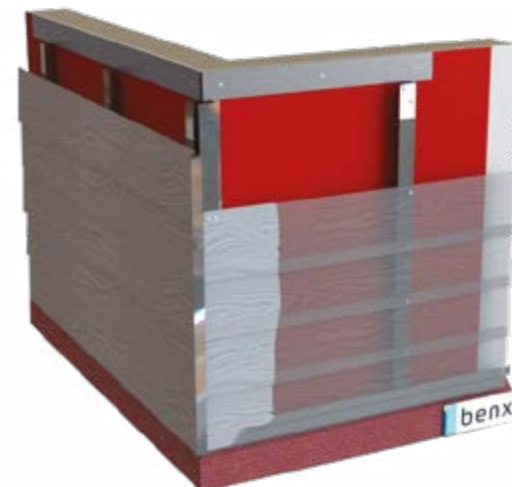
Supertech™ Weatherboard is a simple-to-install, fully ventilated rainscreen cladding system which has an appearance similar to that of timber but the durability and strength of cement. It benefits from BBA Certification and an A1 non-combustible Fire rating.



Supertech on  
**Allface Mounting  
System**



Supertech on  
**Timber Battens**



Supertech on  
**Aluminium  
Z Sections**

## Finishes and colours\*



\*This is only a small selection of colours available. Smooth and woodgrain options are also available.

Colour swatches have been reproduced as accurately as possible; however there may be some variations due to technical, colour reproduction and render manufacture reasons.

If you require an accurate swatch, please ensure you ask us for a sample of the product and colour chosen prior to commencing any works.

# Swisspearl™ Fibre Cement System



Coloured fibre cement panels give façades, individuality, texture, colour and a highly effective protective layer.



benx.co.uk | 0845 519 8641

## System Benefits

### Safety / Performance

- Fire rated to EN 13501-1 class A2-s1, d0
- KIWA BDA certification BAW-19-097-S-A-UK
- BBA Agrément – Cert 15/5227

### Key features

- Integrates with other Benx products to create a certified system solution
- Customised colours and colour-matched fixings available
- Virtually maintenance free
- Suitable for buildings over 18m
- High levels of weather resistance and durability

### Key applications

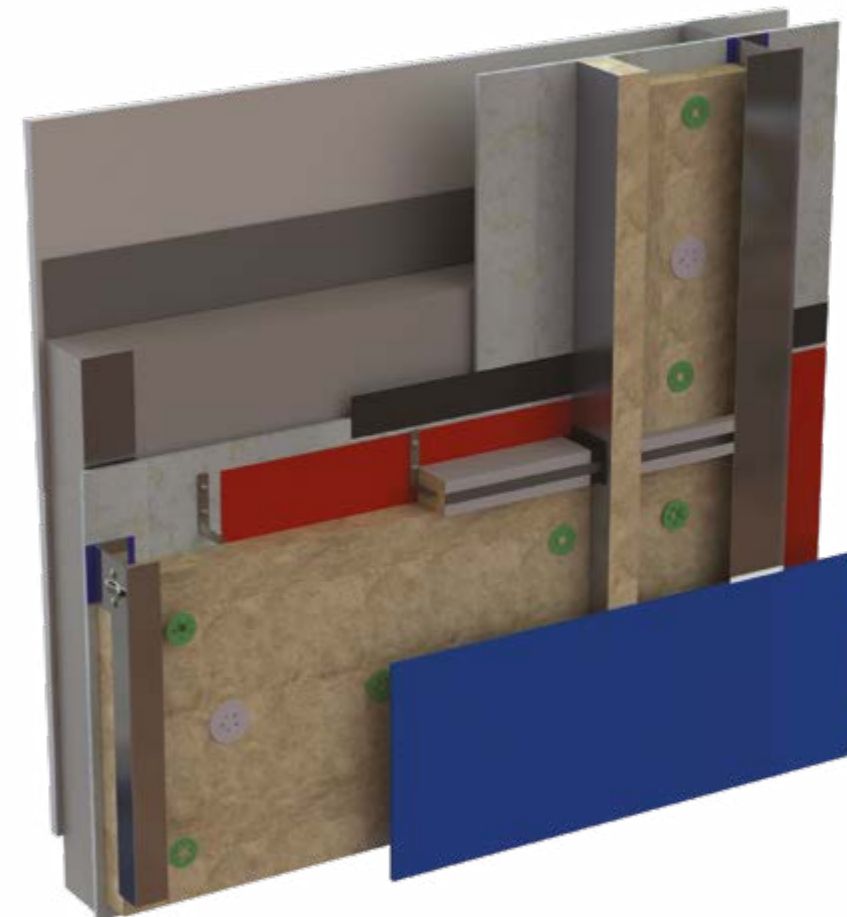
- External façades
- Rainscreen cladding systems
- Roof solutions
- Design-led buildings
- Soffits and facias

## Freedom to design without limits

The proprietary processes pioneered by Swisspearl façades, with a special surface finish, sealed edges and back coating ensure optimal behaviour and durability of the panels, which have been proven over 50 years. These rear-ventilated systems can be used in a wide range of weather and temperature conditions and are quick and easy to install.

Our Swisspearl façade systems are cost-effective building envelope solutions which retain their value. Not only are they very energy efficient but are also virtually maintenance free.

Swisspearl is an innovative and ecological construction material with a unique aesthetic appearance and excellent durability. Manufactured in Switzerland, Swisspearl façade panels are made from 95% natural raw materials from the Swiss Alps.



## Finishes and colours\*



\*This is just a small selection of the wide range of finishes and colours available.

Colour swatches have been reproduced as accurately as possible; however there may be some variations due to technical, colour reproduction and render manufacture reasons.

If you require an accurate swatch, please ensure you ask us for a sample of the product and colour chosen prior to commencing any works.

# Rockpanel™ Rock Fibre System



Sustainable and environmentally friendly materials creating stunning façades.



benx.co.uk | 0845 519 8641

## System Benefits

### Safety / Performance

- Fire rated option of EN 13501-1 class A2-s1, d0
- ETA-13/0340
- CWCT tested incorporating Benx associated products including Allface Support frame

### Key features

- Lightweight and easy to install
- Low maintenance
- Almost 100% recyclable
- Suitable for buildings over 18m
- Exceptional weather resistance
- More than 200 colours, surface finishes and patterns
- Customised solutions
- Integrates with other Benx products

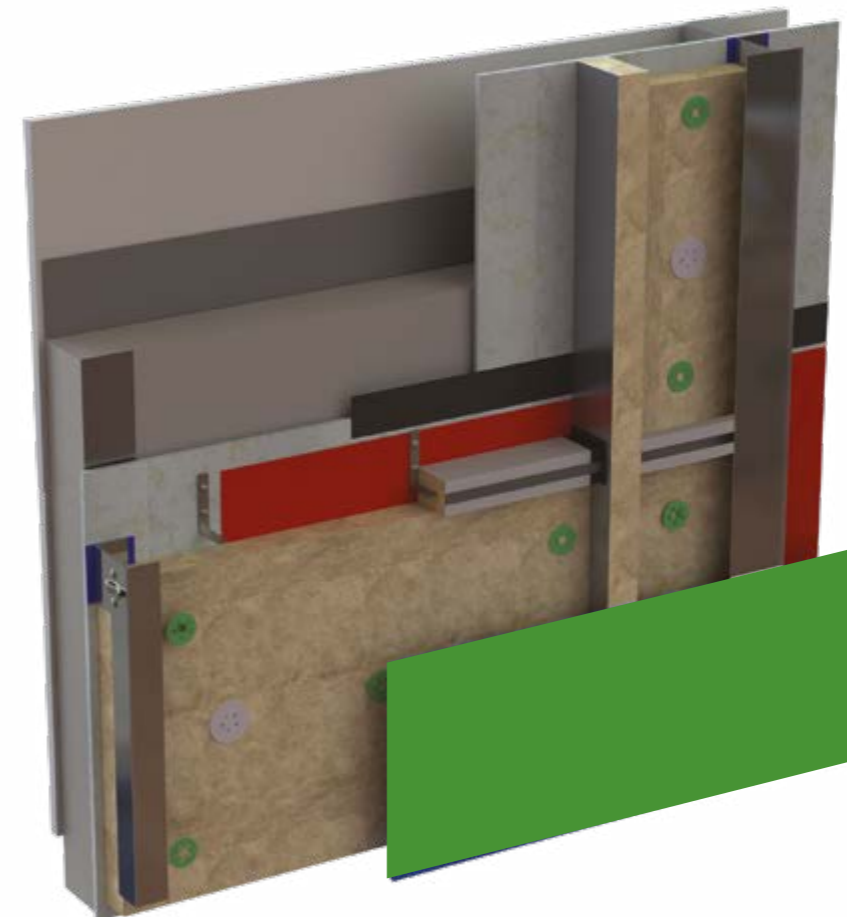
### Key applications

- External façades
- Roofline detailing
- External detailing
- Soffits and facias
- Dormers
- Infills

## Realise your vision with Rockpanel

Manufactured using compressed natural basalt (a readily available volcanic rock) bonded together with an organic binder, Rockpanel façades are sustainable and environmentally friendly. The façade panels are finished with a 4 layer water-based coating to seal in the appearance and colour to provide a lasting finish. Rockpanel façades have the hardness and durability qualities of stone but provide the advantage of a material which has the workability of wood.

Easy to install, these boards are both strong and flexible, and can be cut, bent, shaped and curved to achieve the desired vision without compromising on durability. Impervious to water, and with high levels of weather stability, Rockpanel requires minimal maintenance, is self-cleaning and maintains its original striking and beautiful appearance, with colourfast finishes.



## Finishes and colours\*

### Solid Colours



### Woods



### Metallics



\*This is just a small selection of the wide range of finishes and colours available.

# Luxe Coat Aluminium Façade Systems



A versatile, high-performance façade system, having the ability to transform a building.



CENTRE FOR  
WINDOW AND  
CLADDING  
TECHNOLOGY

benx.co.uk | 0845 519 8641

## System Benefits

### Safety / Performance

- EN13501-1 A Rated fire classification
- CWCT tested incorporating Benx associated products including Allface Support frame
- High Impact Resistance
- Extensive durability testing carried out by Lucideon.

### Key features

- High strength-to-weight ratio
- Excellent insulating properties
- Huge finish and colour range

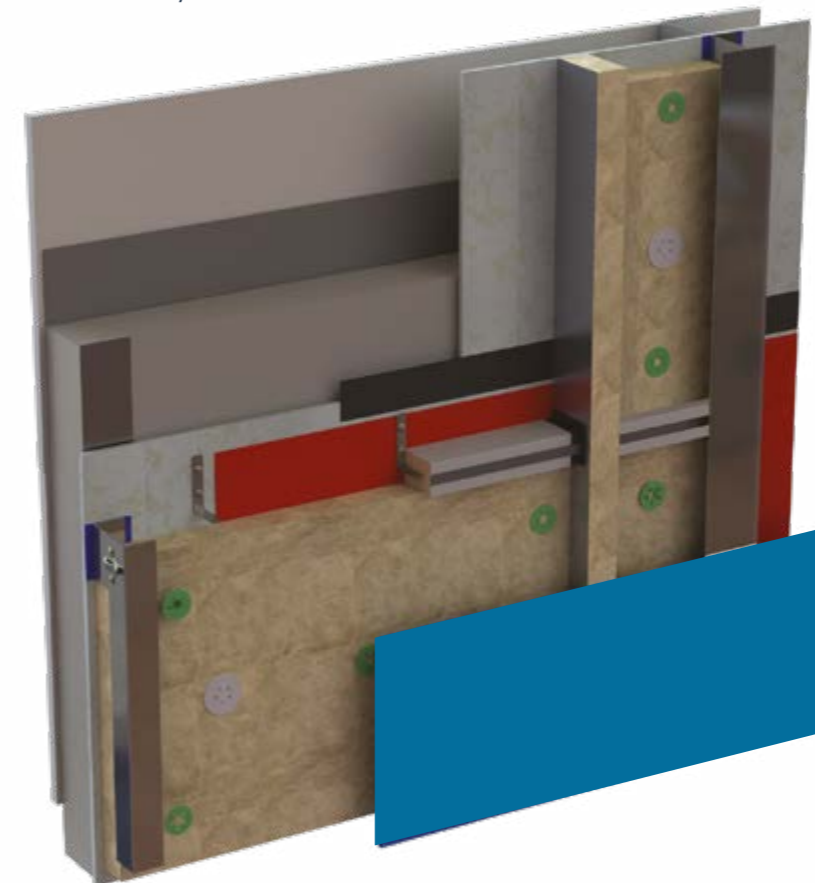
### Key applications

- Rainscreen cladding systems
- Architectural façades

## Italian style, and much more

Luxe Coat solid aluminium cladding provides an A1 (non-combustible) fire-rated, high impact resistant solution with exceptional durability and mechanical benefits. Aluminium's light weight and high strength-to-weight ratio make it a compelling option as a façade material, while its fire reaction and insulating properties provide safety and energy efficiency.

From its manufacturing base in Italy, Luxe Coat produces high quality solid aluminium panels in a range of innovative finishes and almost unlimited colour choices. In addition, its panels are 100% recyclable.



## Finishes and colours\*



\*This is just a small selection of the wide range of finishes and colours available.

Colour swatches have been reproduced as accurately as possible; however there may be some variations due to technical, colour reproduction and render manufacture reasons.

If you require an accurate swatch, please ensure you ask us for a sample of the product and colour chosen prior to commencing any works.

# Products for Offsite Construction

In addition to our integrated façade systems, we offer a wide range of industry - leading components.

## External Sheathing Boards

Our sheathing board range includes A1 fire rated and BBA approved products. From timber to steel frame, high to low rise, our range of sheathing boards, offers a solution for all structural applications.



RCM Y-Wall is a market-leading, A1 fire-rated, calcium silicate sheathing board. This BBA-certified product is perfect for use as a fire rated sheathing board. Offering excellent fire properties as well as high levels of dimensional stability, Y-wall is an exceptional board for use in multiple applications.



DensGlass Sheathing is a high performance, A1 Fire Rated sheathing board that comprising of a fibreglass mat with a gypsum core, designed to provide a high degree of protection from the elements in external cladding constructions.



RCM Multipurpose is an A1 non-combustible, cellulose fibre cement board. RCM Multipurpose is a highly versatile cellulose fibre cement building board, offering excellent strength, weathering and acoustic properties. It is available as building boards and soffit strips.



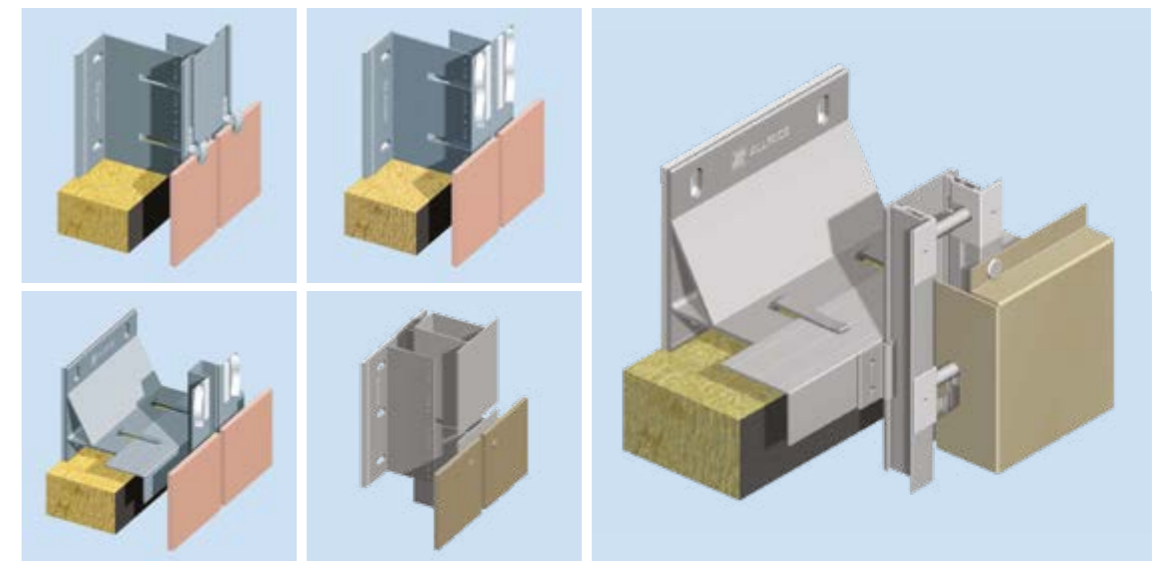
RCM Cemboard is a high-performance cement bonded particle building board. This rigid, medium density, high-performance cement bonded particle building board offers great strength and stability with the workability of wood.



## Support Framing System



Allface is our scalable, highly versatile cladding fixing system based on a range of high quality brackets and support rails, suitable for offsite projects. It can be applied to most brands of exterior cladding panels and is compatible with all common façade finishes.



## Ancillaries

Benx supplies a full range of ancillary products for the installation of rainscreen façades and external wall insulation systems, including fixings, cavity barriers, insulation and renders.



# Case Studies

A selection of the numerous buildings in the UK, showcasing our innovative façade solutions.



## Blackburn City Council

**LOCATION:** Blackburn  
**CUSTOMER:** ModularWise  
**SYSTEM:** RendaClad System with SpeedySlip brick slips

**This project featured a mix of 73 two, three and four-bedroom, affordable homes for Blackburn City Council, funded through Places for People's Strategic Partnership with Homes England.**

The timber-framed houses were created offsite at the Modularwise factory, using pre-fabricated modular construction techniques.

We supplied the façade elements of the BOPAS-accredited homes, comprising 9mm Renderflex boards, an EnviroRend polymer basecoat, reinforcing mesh and SpeedySlip brick slips – all installed within ModularWise's 120,000 offsite factory.

The project has not only brought modern, affordable homes to Blackburn, but has also contributed to the wider regeneration of the area.

## Foundation 200

**LOCATION:** Cambridge  
**CUSTOMER:** Volumetric Ltd  
**SYSTEM:** Swisspearl façade system

**Hill Partnership, through its 'Foundation 200' pledge, is providing 200 modular homes for homeless people over the next five years. The £12m foundation will deliver the homes on small plots of land such as former garage sites across our area of operation.**

Built offsite by Volumetric at its advanced manufacturing facility, each MODULHAUS unit is delivered to site and hoisted into location, fully equipped for occupation.

We are working in partnership with Volumetric to supply Swisspearl rainscreen façade systems, fabricated at our factory and supplied in kit form to allow efficient installation at Volumetric's facility.



Picture used with kind permission of Volumetric Ltd



Reproduced with kind permission of Innovaré Systems

## Thames Park School

**LOCATION:** Grays  
**CUSTOMER:** Innovaré Systems  
**SYSTEM:** Swisspearl System, Supertech and Multipurpose

**Thames Park is one of the country's first schools to be built through the Department for Education's Modern Methods of Construction Framework.**

This £24 million, 900 pupil secondary school will comprise two buildings – a three-storey teaching block and a separate sports block. These are complemented by two multi-use games areas, an all-weather pitch, turfed sports pitches and a running track.

The building is constructed using Innovare Systems' iFAST SIPs panels. These structural panels are delivered to site pre-finished, from internal lining to external cladding with integrated windows in-built.

RCM Multipurpose sheathing board is incorporated into the SIP panel and the façades include both Swisspearl panels and Supertech Weatherboard.

## Sandy Park

**LOCATION:** Exeter  
**CUSTOMER:** Sigmat  
**PRODUCTS:** Y-Wall sheathing boards with DAFA sealing tape

**The £35 million Courtyard Exeter Sandy Park hotel is uniquely placed within the Exeter Chiefs Rugby complex. The eight storey four star hotel features 250 bedrooms and a rooftop restaurant.**

Our longstanding customer, Sigmat, was chosen to supply the light gauge steel frame (LGSF) panelised solution, including all design and detailing. The panels were fabricated at Sigmat's Leeds offsite manufacturing facility, incorporating our Y-Wall non-combustible, calcium silicate sheathing boards, before being transported to site for installation.

Y-Wall is the preferred sheathing board of many LGSF system suppliers, due to its A1 fire-rating, flexibility, dimensional stability and water resistance.



Reproduced with kind permission of Sigmat

# The Benx portfolio at a glance

Category	Product/System	Description	Fire Classification	Certification, approvals, testing
Boards	Multipurpose	Highly versatile cellulose fibre-cement building board, offering excellent strength, weathering and acoustic properties.	A1	BBA
	DensGlass	High performance sheathing board that consists of a fibreglass mat with a gypsum core which is both lightweight and easy to cut to shape.	A1	BBA
	Y-Wall	High-quality flexible calciumsilicate cement-based building board. Offers excellent fire properties as well as high levels of dimensional stability.	A1	BBA
	Cemboard	Rigid, mediumdensity, high-performance cement bonded particle building board which offers great strength and stability with the workability of wood.	B-s1, d0	
Support Framing	Z-profile; Top Hat section; Allface support frame	Z-profile: Low-to-mid rise buildings; cavity depth 38mm or 50mm Top Hat section: Low-to-mid rise buildings; horizontal or vertical; cavity depth 25mm Allface: Mid-to-high rise buildings; cavity depth 50mm-300mm +.	A1	Allface - KIWA BDA
Façade Systems	RendaClad system	A seamless rendered or brick slip rainscreen system on to LSF or timber framed structures.	System - A2	BBA, BOPAS, CWCT tested slips and render
	Cavity System 1 & 2	Typically used on lightweight steel framed structures to create a void between the cladding and the sheathed framed structure. Available in a render (Mineral or acrylic) or brick slip finish.	Primary cavity components. System - A1 and A2 options	KIWA BDA, CWCT tested slips
	Supertech Weatherboard system	Fully-ventilated rainscreen cladding system which has an appearance of traditional timber cladding but the durability and strength of cellulose fibre cement.	System - A1	BBA
	Swisspearl system	Through-wall certified system with Swisspearl coloured fibre cement panels.	System - A2	KIWA BDA (full through-wall certification); BBA
	Rockpanel system	Through-wall system with coloured Rockpanel basalt bonded panels.	System - A2	CWCT tested
	Luxe Coat Solid Aluminium system	Through-wall system with coloured solid aluminium panels.	System - A1	CWCT tested
	SLIPFAST® mechanically-fixed brick slip system	Rain screen system suitable for timber frame (up to 18m), SFS (up to and above 18m).	System 1 - A2 System 2 - A1	KIWA BDA CWCT tested
Direct Fix Systems	Wall System 1	External wall insulation systems specifically for framed structures where the insulation is fixed directly back to the sheathing board.	System - up to A1 dependent on components used	BBA onto timber frame, Kiwa pending onto LSF



#### Disclaimer

The information in this brochure is presented as general information and no representation or warranty is expressly or impliedly given as to its accuracy, completeness or correctness. It does not constitute part of a legal offer or contract. While every effort has been made to ensure its accuracy, this brochure may unintentionally include inaccuracies or errors. The user must verify all the details and specifications independently with Benx prior to concluding any decision to purchase or use the Company's products. In no event shall the Company be liable to the user or any third party for damages, losses and causes of action (including but not limited to negligence), errors, injury, whether direct, indirect, consequential, or incidental, suffered or incurred by any person/s or due to any use and/or inability to use this brochure or information therein. Benx reserves the right to terminate, revoke, modify, alter, add and delete any of the information in the brochure. The Company shall be under no obligation to notify the user of any such amendment.

Images included in this brochure are taken from projects supplied by Benx. The available range of finishes may, in certain situations, differ from those shown in the project images.





**Benx** Lonsdale Chambers, Lonsdale Street,  
Stoke-on-Trent, Staffordshire ST4 4BT

**T: 0845 519 8641**  
[benx.co.uk](http://benx.co.uk)

