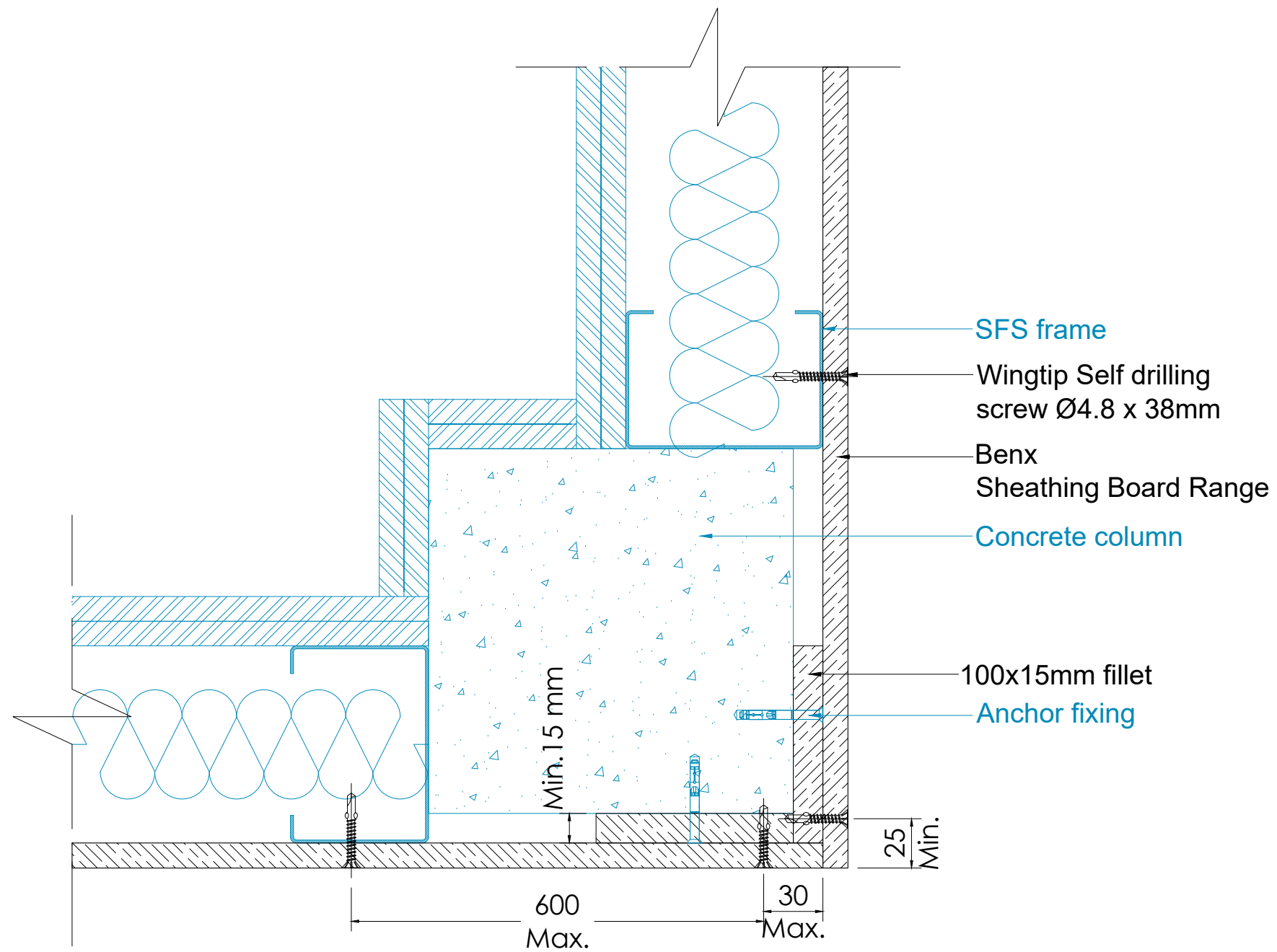


Corner detail on top hat

REV	DATE	NOTE	BY	STATUS:	INFORMATION	DRAWN:
-	01/10/22	First Issue	MB	PROJECT:	TWS??-?????	ISO No:
				DRAWING No:	TWS??-TD-??-03	????
				DESCRIPTION:	CORNER DETAIL ON TOP HAT	CHECK:
						DM
						NTS@A3
						DATE:
						??
						REV:
						??



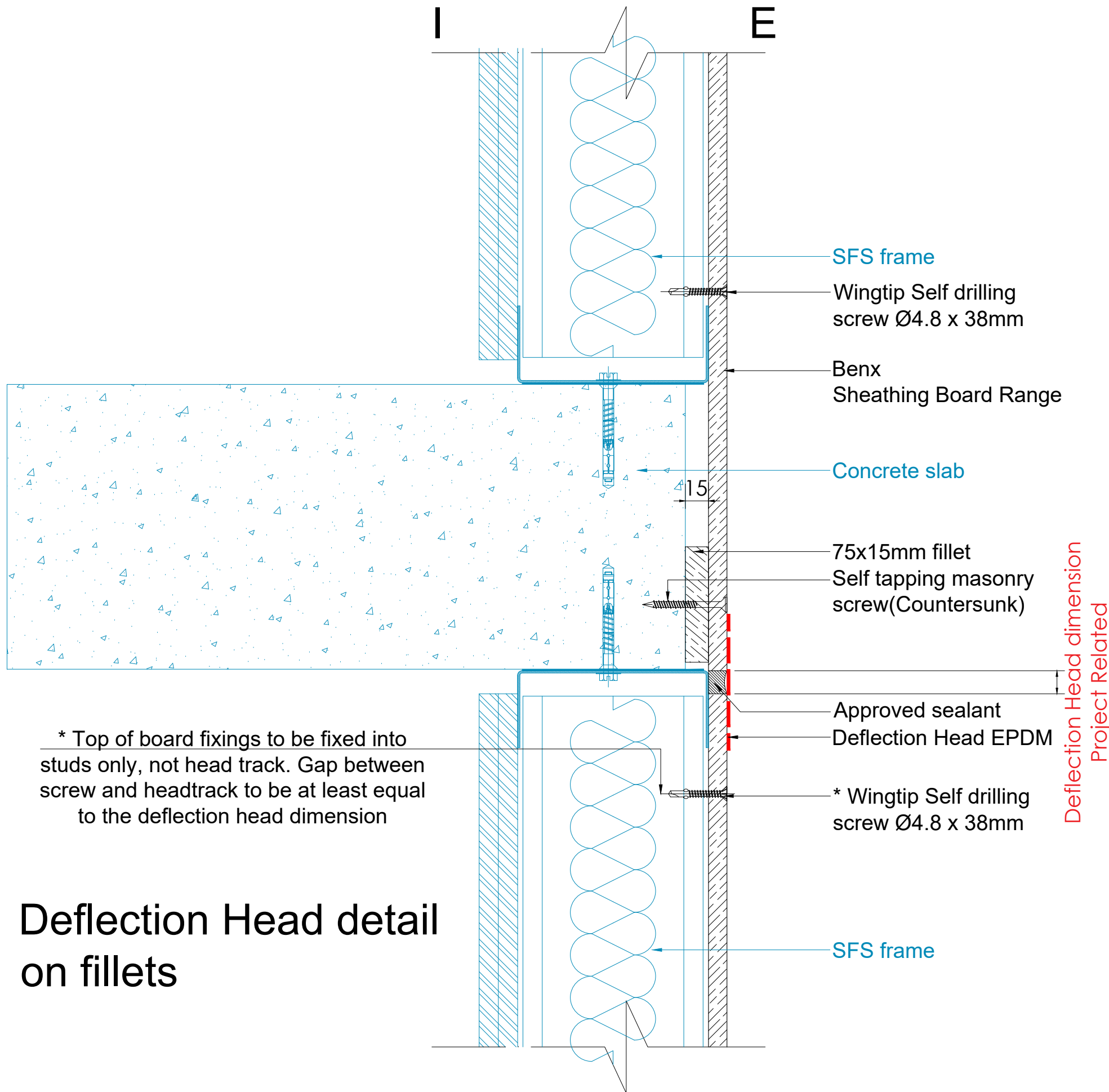
Corner detail on fillets

Benx Ltd, Lonsdale Chambers,
Lonsdale Street,
Stoke-on-Trent
Staffordshire
ST4 4BT
Telephone: 0845 130 0983
Email:
technicalservices@benx.co.uk

All performance data & systems specifications are for systems constructed with materials & components as shown. The inclusion or substitution of any other manufactures materials or components invalidates both test data, system performance and compliance with CDM 2015. The information is provided and based upon details received, which are assumed to include all the relevant facts and data. While it is believed to be correct, we accept no liability for its accuracy, adequacy or completeness. Recipients must satisfy themselves as to its suitability as we do not accept responsibility for any claims or consequential loss. Acceptance of the content and subsequent design responsibility rests entirely with the recipients. Any subsequent design changes that affect the detail which we are not informed of in a written format will void this detail. None of the content may be copied without the prior approval from the Benx Group Technical Services Department. This statement should be read in conjunction with the standard terms and conditions of Benx Group.

REV	DATE	NOTE	BY	STATUS:	INFORMATION	DRAWN:
-	01/10/22	First Issue	MB	PROJECT:	TWS??-?????	ISO No:
				DRAWING No:	TWS??-TD-??-04	????
				DESCRIPTION:	CORNER DETAILS ON FILLETS	DM
						NTS@A3
						DATE:
						??
						REV:
						??





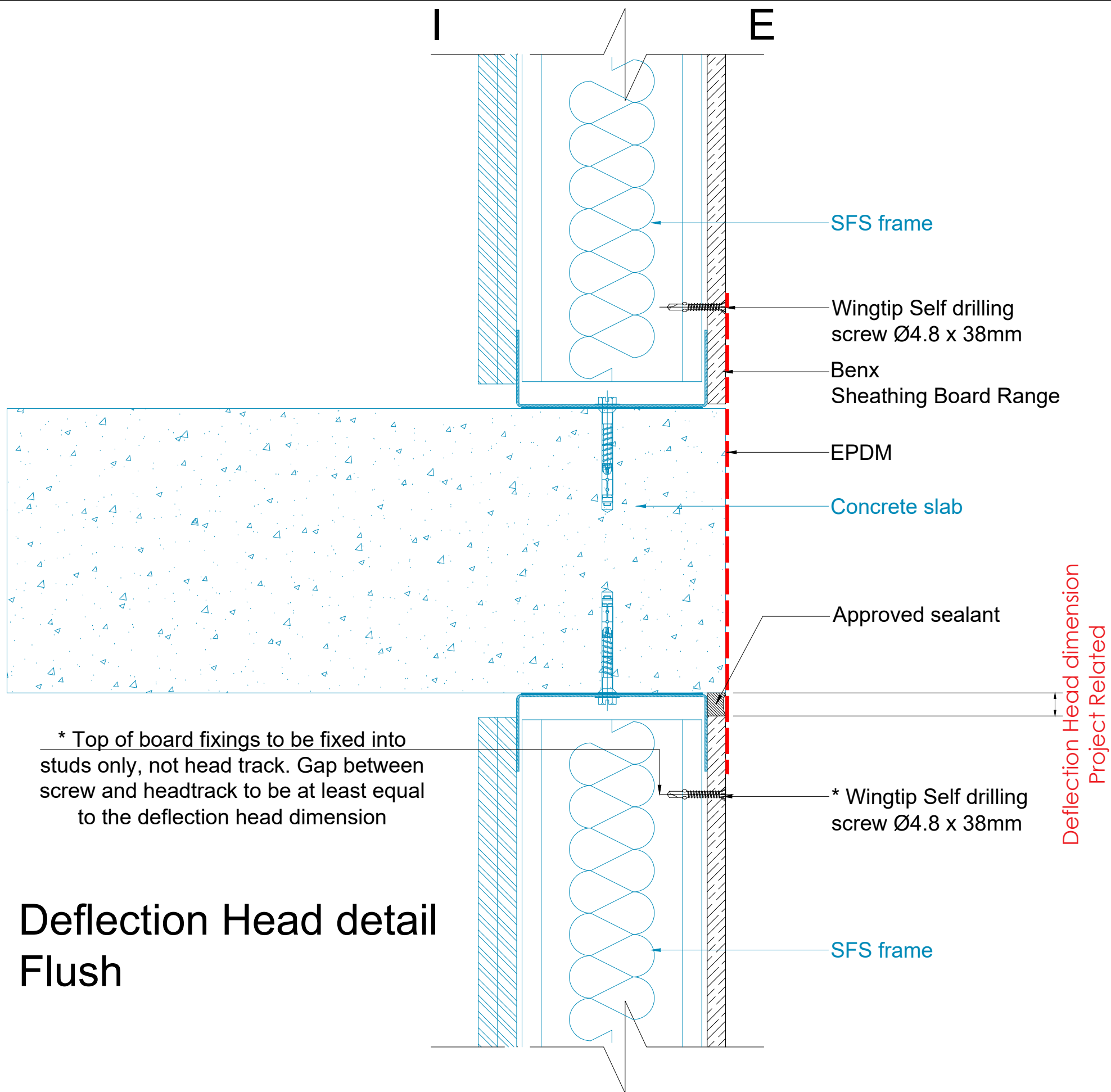
Deflection Head detail on fillets

* Top of board fixings to be fixed into studs only, not head track. Gap between screw and headtrack to be at least equal to the deflection head dimension

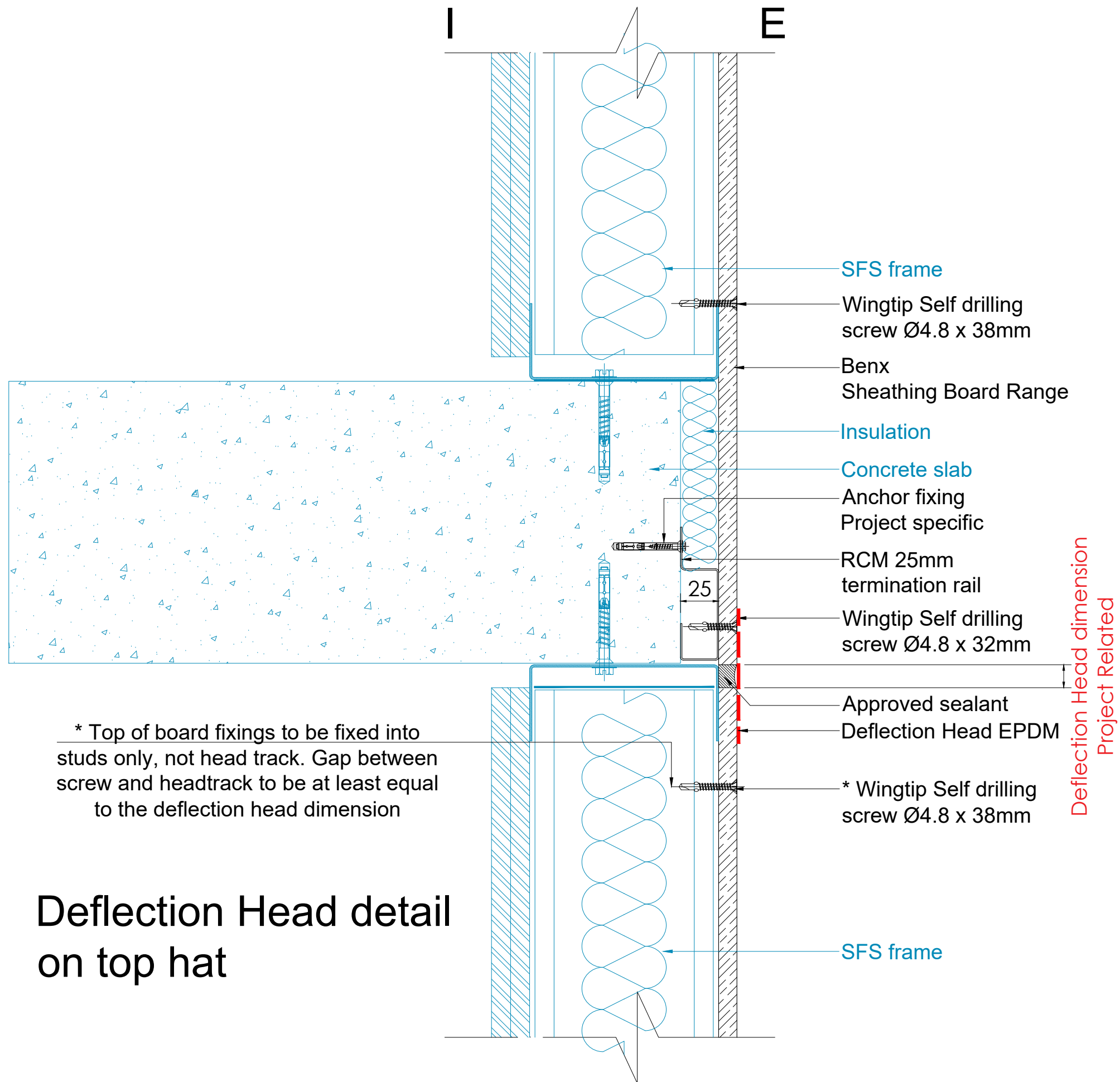
Benx Ltd, Lonsdale Chambers,
Lonsdale Street,
Stoke-on-Trent
Staffordshire
ST4 4BT
Telephone: 0845 130 0983
Email:
technicalservices@benx.co.uk

All performance data & systems specifications are for systems constructed with materials & components as shown. The inclusion or substitution of any other manufactures materials or components invalidates both test data, system performance and compliance with CDM 2015. The information is provided and based upon details received, which are assumed to include all the relevant facts and data. While it is believed to be correct, we accept no liability for its accuracy, adequacy or completeness. Recipients must satisfy themselves as to its suitability as we do not accept responsibility for any claims or consequential loss. Acceptance of the content and subsequent design responsibility rests entirely with the recipients. Any subsequent design changes that affect the detail which we are not informed of in a written format will void this detail. None of the content may be copied without the prior approval from the Benx Group Technical Services Department. This statement should be read in conjunction with the standard terms and conditions of Benx Group.

REV	DATE	NOTE	BY	STATUS:	INFORMATION	DRAWN:	
-	01/10/22	First Issue	MB	PROJECT: DEFLECTION HEAD DETAIL	ISO No: 5204	MB	
A	04/11/22	Joint position	MTM			DRAWING No: 05	CHECK: JT
B	26/03/24	Fillet fixing arrangement updated	JT			DESCRIPTION: DEFLECTION HEAD DETAIL ON FILLETS	NTS@A3
						DATE: 09/22	
						REV: B	



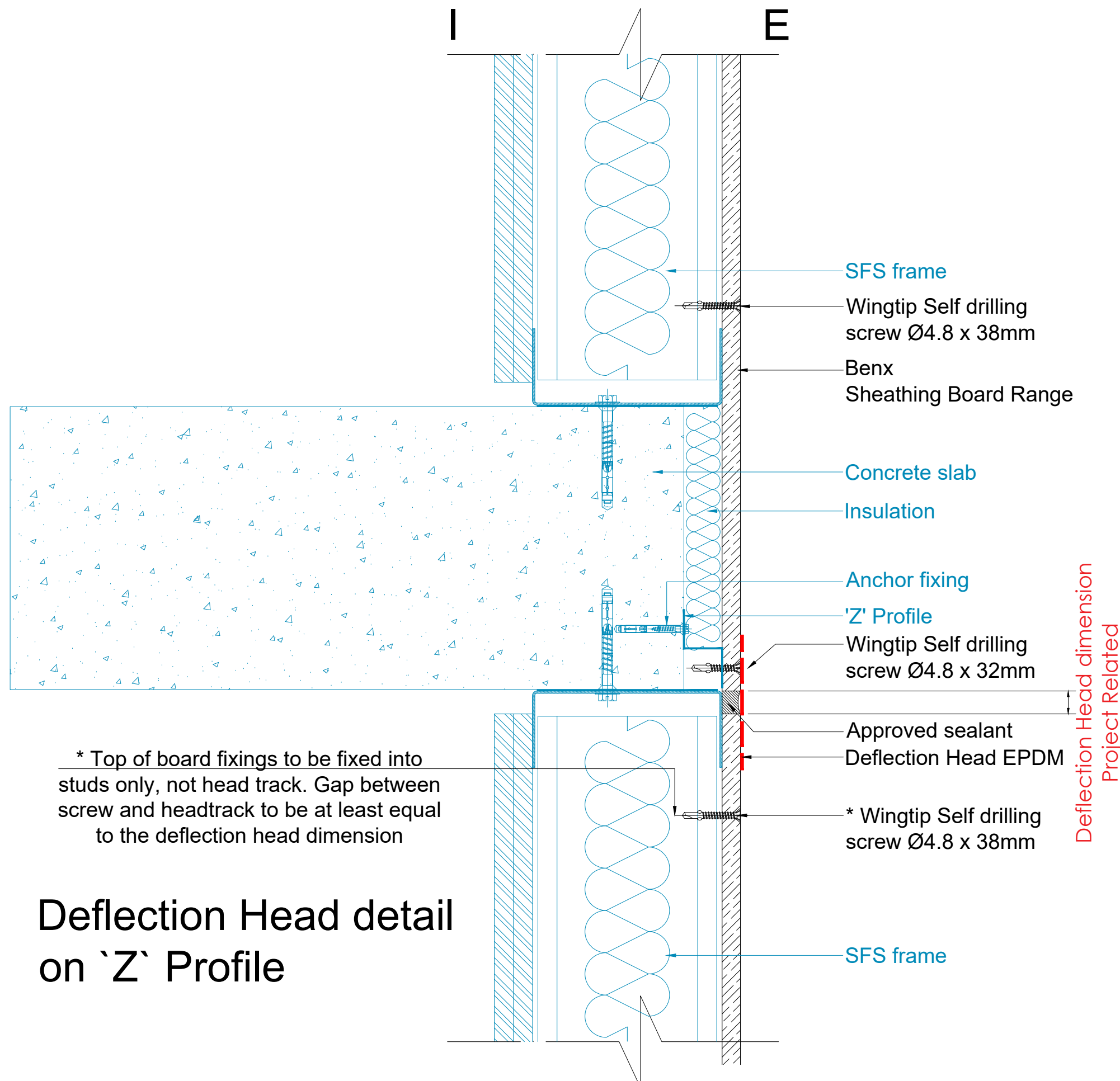
Deflection Head detail Flush



* Top of board fixings to be fixed into studs only, not head track. Gap between screw and headtrack to be at least equal to the deflection head dimension

Deflection Head detail on top hat

REV	DATE	NOTE	BY	STATUS:	INFORMATION	DRAWN:
-	-	-	-	PROJECT:	DEFLECTION HEAD DETAIL	ISO No: 5204
A	04/11/22	Joint position	MTM	DRAWING No:	07	CHECK: DM
				DESCRIPTION:	DEFLECTION HEAD DETAIL ON TOP HAT	NTS@A3
						DATE: 09/22
						REV: A

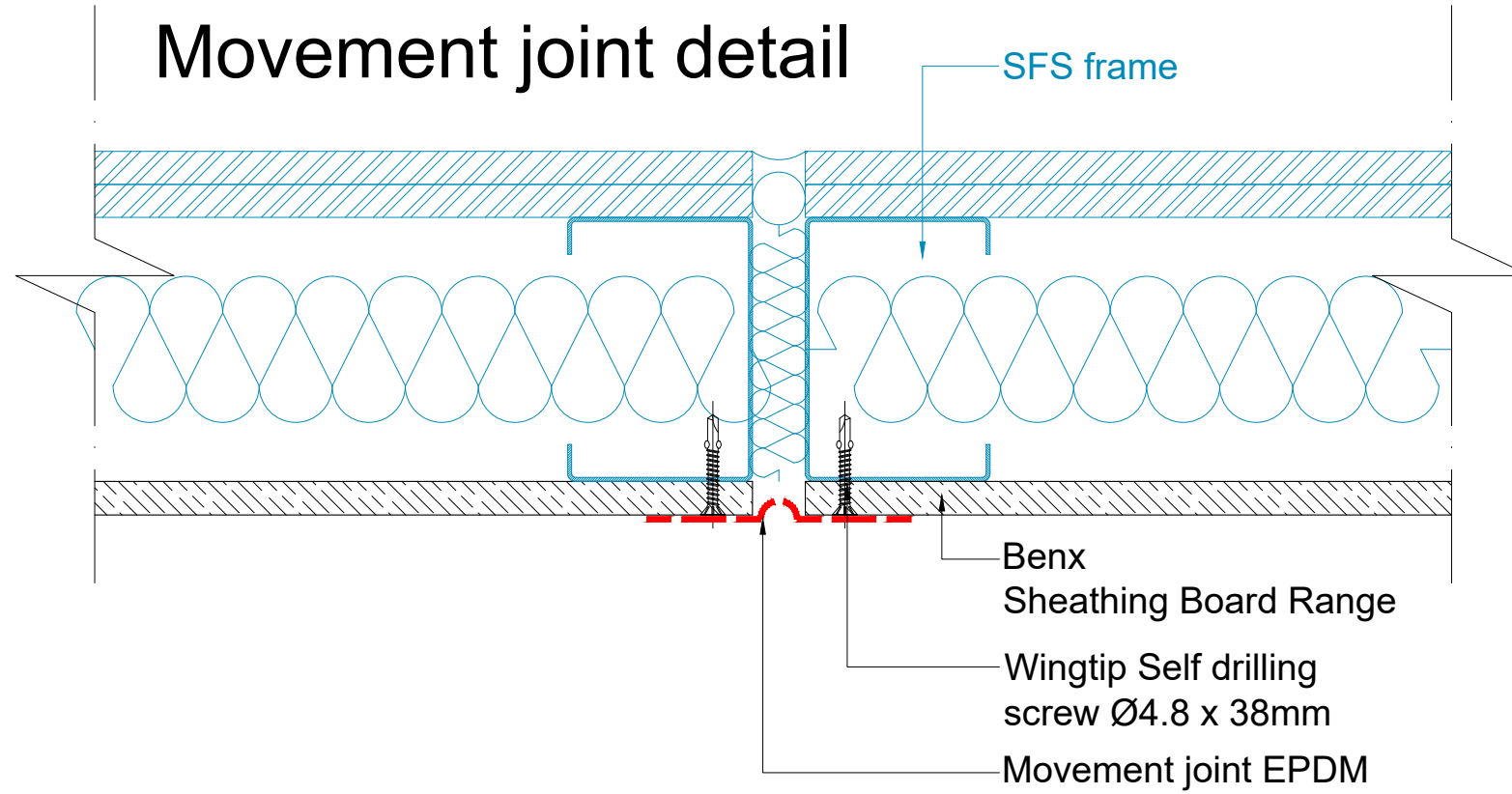


* Top of board fixings to be fixed into studs only, not head track. Gap between screw and headtrack to be at least equal to the deflection head dimension

Deflection Head detail on 'Z' Profile

REV	DATE	NOTE	BY	STATUS:	INFORMATION	DRAWN:
-	-	-	-	PROJECT:	DEFLECTION HEADS	MB
A	04/11/22	Joint position	MTM	DEFLECTION HEADS	ISO No: 5204	DM
				DRAWING No:	08	NTS@A3
				DESCRIPTION:	DEFLECTION HEAD DETAIL ON 'Z' PROFILE	DATE:
						09/22
						REV:
						A

Movement joint detail



Benx Ltd, Lonsdale Chambers,
Lonsdale Street,
Stoke-on-Trent
Staffordshire
ST4 4BT
Telephone: 0845 130 0983
Email:
technicalservices@benx.co.uk

All performance data & systems specifications are for systems constructed with materials & components as shown. The inclusion or substitution of any other manufactures materials or components invalidates both test data, system performance and compliance with CDM 2015. The information is provided and based upon details received, which are assumed to include all the relevant facts and data. While it is believed to be correct, we accept no liability for its accuracy, adequacy or completeness. Recipients must satisfy themselves as to its suitability as we do not accept responsibility for any claims or consequential loss. Acceptance of the content and subsequent design responsibility rests entirely with the recipients. Any subsequent design changes that affect the detail which we are not informed of in a written format will void this detail. None of the content may be copied without the prior approval from the Benx Group Technical Services Department. This statement should be read in conjunction with the standard terms and conditions of Benx Group.

REV	DATE	NOTE	BY	STATUS:	INFORMATION	DRAWN: MB
-	-	-	-	PROJECT:	TWS??-?????	CHECK: DM
				ISO No:	????	NTS@A3
				DRAWING No:	TWS??-TD-??-09	DATE: ??
				DESCRIPTION:	MOVEMENT JOINT	REV: ??

