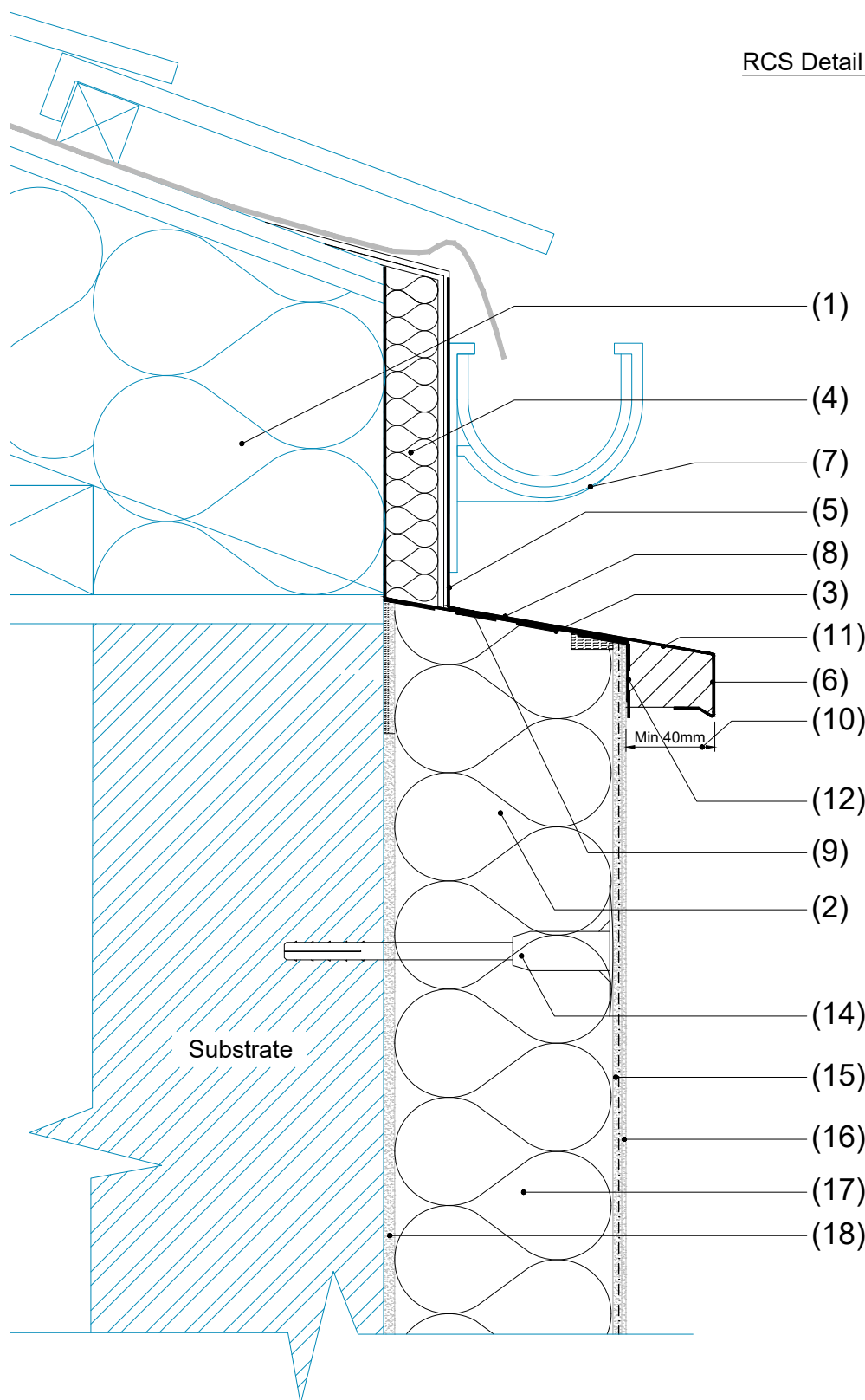


RCS Detail 1



1. Existing fascia & gutter removed. insulation packed between rafter feet;
2. Top of insulation board chamfered to form min 10 degree fall;
3. Waterproof membrane with minimum 100mm laps at all joints. joints offset (min 100mm) from joints in metal flashing. membrane to have positive fall away from roof;
4. Thermal insulation(min 0.6 m² K/W) **SEE NOTES BELOW**
- 5.
6. Metal flashing(single or 2 part) with min. 10 degree fall;
7. Face width of flashing min 40mm;
8. Gutter to be fixed through insulated flashing to substrate
9. Membrane bonded to top of EWI system.
10. No seal between underside of metal flashing and top of membrane (maintain water egress pathway);
11. minimum 40mm between drip edge of metal flashing and face of render. increase to min 50mm in severe/very severe exposure locations;
12. Adjacent sections of metal trims incorporate over / or under connections with minimum 40mm projection on each side of the join. Expansion gap of 2-3mm between aluminium lengths. Joints between flashing's offset from joints between membranes by min 100mm.
13. Membrane to be sealed to the render system below.
14. Specified Fixings
15. SPS Envirowall Basecoat (See M21 Spec for thickness) with glass-fibre mesh bedded into top third.
16. Topcoat (See Benx M21 Spec)
17. Grey EPS Insulation (See Benx M21 Spec)
18. Envirobed adhesive

NOTES:-

Note A; Felt to be pressed and adhesively fixed.
 Note B; Ventilation zone should be at least 25mm and should be continuous up to the Apex, in line with BS EN 5250 guidance.

Note C; Insulation types to achieve 0.6W/mK are; 20mm EPS at 0.031=0.645, 30mm XPS at 0.035=0.857



Benx Ltd, Lonsdale Chambers,
 Lonsdale Street,
 Stoke-on-Trent
 Staffordshire
 ST4 4BT
 Telephone: 0845 130 0983
 Email:
technicalservices@benx.co.uk

REV	DATE	NOTE	BY	STATUS:	INFORMATION	DRAWN:
A	13/06/24	First issue	AG	PROJECT:	PAS 2035 - RCS Detail 1	AG
				ISO No:	5225_EPS	CHECK:
				DRAWING No:	TD-WS1-PAS-M-EPS-R-019	JT
				DESCRIPTION:	Flush eaves - Insulation flashing with external separate gutter	NTS@A4
						DATE:
						Jun 24
						REV:
						A