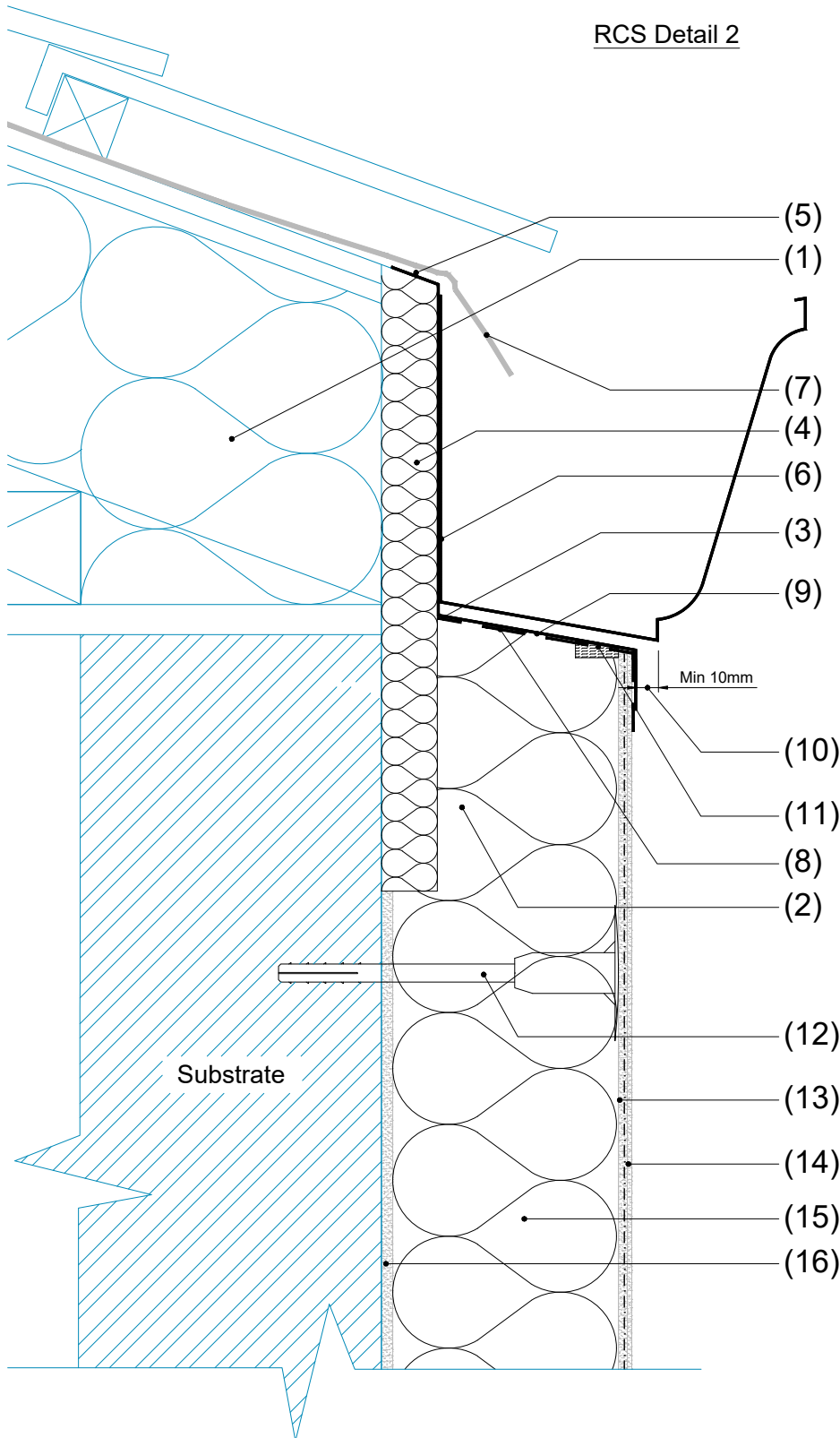


RCS Detail 2



1. Existing fascia & gutter removed. insulation packed between rafter feet;
2. Top of insulation board chamfered to match fall of gutter;
3. Waterproof membrane with minimum 100mm laps at all joints. joints offset (min 100mm) from joints in gutter. membrane to have positive fall away from roof;
4. Thermal insulation (min 0.6 m² K/W) **SEE NOTES BELOW**
5. Gutter profile;
6. Gutter union double sealed (e.g. butyl or silicone sealant) with min 40mm overlap on each side of the joint;
7. Sarking/roof felt dressed into gutter;
8. Membrane fixed to top of EWI system.
9. No seal between underside of gutter and top of membrane (maintain water egress pathway)
10. minimum 10mm gutter projection from face of render.
11. Double seal between render abutment and membrane under gutter profile;
12. Specified Fixings
13. SPS Envirowall Basecoat (See M21 Spec for thickness) with glass-fibre mesh bedded into top third.
14. Topcoat (See Benx M21 Spec)
15. Grey EPS Insulation (See Benx M21 Spec)
16. Envirobed adhesive

NOTES;-

Note A; Ventilation zone should be at least 25mm and should be continuous up to the Apex, in line with BS EN 5250 guidance.

Note B; Insulation types to achieve 0.6W/mK are; 20mm EPS at 0.031=0.645, 30mm XPS at 0.035=0.857



Benx Ltd, Lonsdale Chambers,
Lonsdale Street,
Stoke-on-Trent
Staffordshire
ST4 4BT
Telephone: 0845 130 0983
Email:
technicalservices@benx.co.uk

REV	DATE	NOTE	BY	STATUS:	INFORMATION	DRAWN:
A	13/06/24	First issue	AG	PROJECT:	PAS 2035 - RCS Detail 2	AG
				ISO No:	5225_EPS	CHECK:
				DRAWING No:	TD-WS1-PAS-M-EPS-R-019	JT
				DESCRIPTION:	Flush eaves - Insulation flashing with external separate gutter	NTS@A4
						DATE:
						Jun 24
						REV:
						A