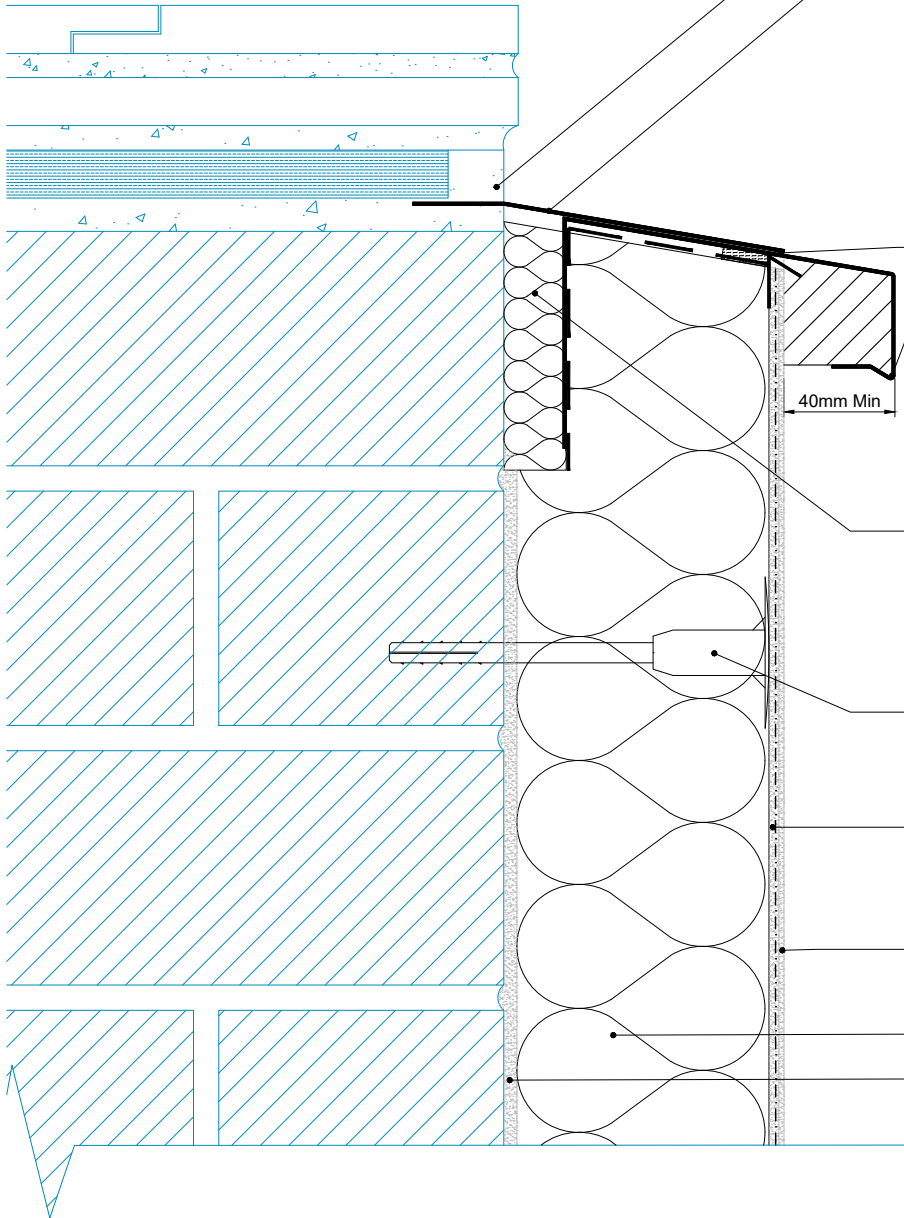


### RCS Detail 4



Existing pointing removed and replaced with flexible (e.g. polymer modified) cementitious mortar

Metal flashing (e.g. aluminium over-capping, traditional lead or substitute lead) dressed under cement launching/roof tiles and sealed in by new pointing  
If traditional lead flashing used, maximum length of a single piece of lead shall be 1200 mm. Overlaps (min. 150 mm) shall follow best practice. Lead flashing to extend to outer edge of metal (verge trim) profile Comply with the requirements of 'eControl of lead at work (Third edition) – Control of Lead at Work Regulations 2002 Approved Code of Practice and guidance' (hse.gov.uk)

Continuous seal between metal over capping (or lead flashing/substitute lead flashing) & verge trim.

Male/female verge trim profile mechanically fixed to Minimum 50 mm overlaps. Face width min. 40 mm. Projection from render face: 40 mm (50 mm for severe/very severe exposure sites)  
Apex sections shall be pre-fabricated: Site-formed apex sections are not permissible although site bending is permissible (subject to manufacturer's recommendations) – secondary lead/lead replacement flashing is required over site-bent fabrications

Thermal insulation ( $R \geq 0.6 \text{ m}^2\text{K/W}$ ): Not required above loft insulation level), See Note Below.

Note A: To be read in conjunction with SC-4-S-A  
Note B: Insulation types to achieve  $0.6\text{W/mk}$  are; 20mm EPS at  $0.031 = 0.645$ , 30mm XPS at  $0.035 = 0.857$

Specified Fixings

SPS Envirowall Basecoat (See M21 Spec for thickness) with glass-fibre mesh bedded into top third.

Topcoat (See Benx M21 Spec)

Grey EPS Insulation (See Benx M21 Spec)

Envirobed adhesive



Benx Ltd, Lonsdale Chambers,  
Lonsdale Street,  
Stoke-on-Trent  
Staffordshire  
ST4 4BT  
Telephone: 0845 130 0983  
Email:  
[technicalservices@benx.co.uk](mailto:technicalservices@benx.co.uk)

REV	DATE	NOTE	BY	STATUS:	INFORMATION	DRAWN:
A	13/06/24	First issue	AG	PROJECT:	PAS 2035 - RCS Detail 4	AG
				ISO No:	5225_EPS	CHECK:
				DRAWING No:	TD-WS1-PAS-M-EPS-R-019	JT
				DESCRIPTION:	Flush gable verge following apex - Verge trim with overcapping profile	NTS@A4
						DATE:
						Jun 24
						REV:
						A