

Cladcolour[®]

Innovative Facades

Colour-through fibre cement panel system with endless design possibilities to create unique, timeless facades



Cladcolour®

Innovative Façades

Cladcolour MP Facade Panels have been created to fulfil the criteria required of a beautiful, durable and safe building design.

With a spectrum of colour options, Cladcolour can be used as the decorative element of any rainscreen solution bringing stunning designs to life. The base material of the panels are fibre cement, a product that is ideal for this application. In addition to its inherent stability, durability and fire safety properties, we are proud to use one of the most environmentally acceptable modern building materials currently available.

With Cladcolour, Benx can help you realise your aesthetic vision.



Cladcolour®

Innovative Facade Systems

Contents

Built on innovation & quality	4
Sustainability at our core	5
Cladcolour Cladding System	6
Cladcolour	7
Cladcolour MP	8
Products for new build construction	10
Cladcolour Benefits	12
Cladcolour Production	13
Portfolio	14

Built on innovation and quality

Our success has been built on decades of rigorous testing, technical know-how and innovation. But we never stand still. We always strive for safer, more cost-effective, sustainable façade solutions. This constant evolution means we endeavor to offer the best innovation in the market.

Inspired Thinking

Understanding the needs and objectives of our customers is vital when developing new systems. Through collaboration, knowledge and experience, we create concepts and prototype drawings to address the current and emerging needs of our customers. Working closely with our supply partners, we draw upon their latest components to provide the best in product innovation. Through our collaborative approach, we help you create outstanding buildings with stunning, high-quality façades.



Outstanding buildings with stunning façades.



Certifications and more

Our products and systems are backed by one of the strongest portfolios of testing and certifications in the façades industry. In addition to BBA and KIWA BDA Agréments, some of our systems are also certified or tested by CWCT or Bopas. With these accolades, you can be sure that our façade systems have been independently verified and are fit for purpose.

Test, test, test

Rigorous testing lies at the heart of our product development process. By independently testing our products and systems, we can be sure they meet the highest standards of safety and durability. We pay particular attention to fire safety and many of our products and systems are A1-rated (non-combustible). Working with leading independent test houses, we also test for strength and stability, thermal insulation, resistance to moisture and durability.

Sum of the best parts

A system is only as good as its constituent parts. We source the best components from our extensive global supply chain, only selecting proven materials from resilient suppliers. Independent factory audits ensure that quality standards are met consistently. Because we focus on each component as well as the overall result, you can be sure our systems comprise the best possible parts. Where possible UK manufacturing and lower carbon footprint focus very highly in our selection process.

Strength, stability and durability



Our social and community responsibilities reflect our values as a business.

We are committed to supporting fair working practices as well as charities and the communities in which we operate, by donating our time, resources, and funds to organisations that share our values and work towards a better world.

Through these efforts, we hope to create a lasting legacy and contribute to a more sustainable and equitable future for all.

Sustainability at our core

Our commitment to environmental sustainability is underpinned by our ISO14001 (Environmental Management System) and ISO50001 (Energy Management System) certifications.

We are committed to operating at all times in accordance with all relevant environmental legislation and regulations and are constantly seeking ways to improve our performance. We prioritise a wide range of actions that help reduce climate impacts.

Energy Efficiency

We constantly seek ways to enhance the energy efficiency of our operations. The implementation of a 4100KW solar panel system at our Parkhouse fabrication unit in 2023 is just one of these measures. The panel optimisation system we use to produce the Cladcolour panel means the majority of panels are pre-cut prior to coating. This may seem a small point, but it has an enormous impact on wastage and overall efficiency. By pre-cutting before coating significantly reduces the amount of panel that is unnecessarily thrown away. This has a positive impact on cost as well as massively reducing unnecessary on-site waste.

Waste and Recycling

Our in-house fabrication processes allow us to reduce waste considerably. Wherever possible, we try to re-use or recycle waste materials.

Renewables

We source only renewable energy and, wherever possible, we utilise our sites for renewable energy generation.

Embodied Carbon

We work closely with our extensive supply chain to find ways to reduce the embodied carbon of our products and systems.

Continuous Review

We constantly monitor our environmental performance to establish benchmarks for continuous improvement and we regularly review our environmental policy to take into account stakeholder views, updates to legislation, and any changes in our environmental impacts.



Cladcolour Cladding System

Cladcolour MP is a high performance decorative exterior cladding panels in a range of finishes, colours and effects.

The Benx panel range initially started with our Supertech timber effect planks, but with the introduction of Cladcolour, Benx now brings an exciting cladding collection.

Some of Cladcolour's key benefits:

Environmental

- Although Cladcolour is still cut from a "master sheet", for maximum efficiency, it is primarily finished after being cut and drilled. This can significantly reduce the wastage of finished product.
- By reducing production waste, we are able to offer Cladcolour at competitive rates.

Fire – A1 to BS EN 13501

- Our Cladcolour MP is BS EN 13501 classified A1, and this includes fixing options back to both timber battens and metal support frame. Please contact our technical services for any specific project discussions.

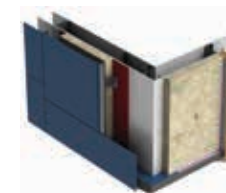
Certification

- Agrément assessment for Cladcolour MP has been successfully completed for use on both masonry and framed structures, with varying supporting sub frames including timber and metal support frames.
- Cladcolour MP is also under KIWA BDA Agrément assessment for inclusion in our Safewall family of Agréments.

Improved lead times

- Due to unique way of processing the product and our optimised panels being finished after cutting and drilling, this allows us greater flexibility of base panel and coating, reducing our lead times to customers.

Flexible System Configurations



Cladcolour System on Top Hat Sections

*Also suitable for fitting to Timber Battens and Allface Mounting System.



Cladcolour Collection

Cladcolour MP

Available in both 9mm and 12mm as standard, it is available in a wide range of standard solid colours, which are shown on page 9 of this brochure.

Cladcolour MP comes with a smooth slightly mottled effect as standard, providing a high quality natural finish to the panel.

Non-standard colours and gloss

On **Cladcolour MP**, we are able to do other non-standard colours subject to a minimum production run of 500m². Also, although our standard gloss level of finish of our products is around 15%, we are able on most colours to slightly reduce or increase the gloss level to change panel finish, again based on a minimum production run of 500m².



Cladcolour MP

Cladcolour MP is a fibre cement based cladding panel, available in a wide range of standard colours, but also available in other RAL and NCS colours subject to minimum quantity.



Information

Our high performance coatings ensure a durable and attractive finish to any façade. With a fire classification of A1 to BS EN 13501, our MP range offers industry leading fire characteristics fitted back to both timber or metal support frames.

Panel Thickness

Available in both 9mm and 12mm as standard

(other thicknesses available on request and subject to minimum order quantity)

Master Panel Sizes

2400mm x 1200mm

3000mm x 1200mm



Technical Data

Density
1375kg/m³

Average MOR (Control)
12.0 MPa

Thermal Conductivity
0.12W/mk

Fire Classification:

A1 BS EN 13501 options on both timber and metal support frame.

								
Traffic White	Light Grey	Oyster White	Light Ivory	Pastel Turquoise	Jet Black	Iron Grey	Dark Grey	NCS S 6502-B
								
Khaki Brown	Dark Brown	Lavendar Blue	Lilac Blue	Sand Yellow	Red	Pine Green	Blue Grey	NCS S 550-N
								
Grey Brown	Grey Green	NCS S 3030-Y70R	NCS S 3040-Y70R	NCS S 4030-Y50R	NCS S 4040-Y70R	NCS S 1020-Y20R	NCS S 1030-Y	NCS S 7500-N
								
NCS S 2020-Y	NCS S 3030-Y10R	NCS S 1050-Y20R	NCS S 5010-G10Y	NCS S 3010-G70Y	NCS S 5010-G70Y	NCS S 6010-B90G	NCS S 3010-B	NCS S 8000-N
								
NCS S 3020-B	NCS S 6010-R90B	NCS S 2502-B	NCS S 0505-Y30R	NCS S 1005-Y20R	NCS S 0502-Y	NCS S 0502-G50Y	NCS S 0505-Y10R	



Delivering
maximum longevity

Products for new build construction

In addition to our integrated façade systems, we offer a wide range of industry-leading components.

Exterior sheathing boards

Our sheathing board range includes A1 fire rated and BBA approved products. From timber to steel frame, high to low rise, our range of sheathing boards, offers a solution for all structural applications.



RCM Y-Wall is a market-leading, A1 fire-rated, calcium silicate sheathing board. This BBA certified product is perfect for use as a fire rated sheathing board. Offering excellent fire properties as well as high levels of dimensional stability, Y-wall is an exceptional board for use in multiple applications.



DensGlass Sheathing is a high-performance, A1 fire-rated sheathing board, constructed with a durable fiberglass mat and a gypsum core. Lightweight and easy to install using the scribe-and-snap method, DensGlass is the leading specified sheathing board in the U.S., boasting an exceptional 30+ year track record of reliability and performance.



RCM Multipurpose is an A1 non-combustible, cellulose fibre cement board. RCM Multipurpose is a highly versatile cellulose fibre cement building board, offering excellent strength, weathering and flexibility of curved facades properties. It is available as building boards and soffit strips.

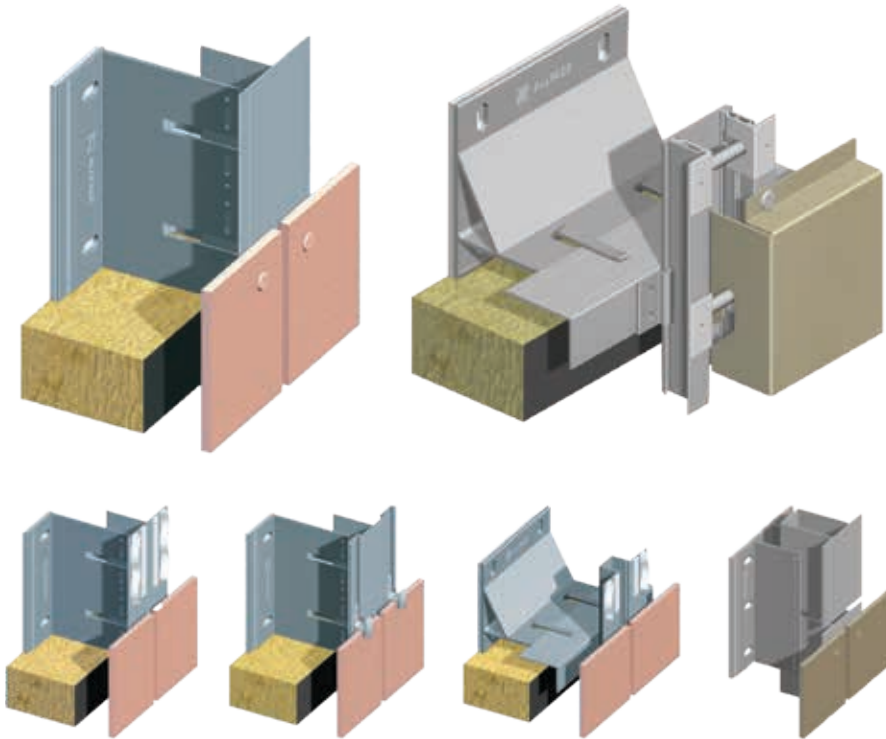


RCM Cemboard is a rigid, medium-density, cement-bonded particle board that combines exceptional strength and stability with the easy workability of wood. Offering superior acoustic performance and high impact resistance, Cemboard also boasts excellent weathering properties, making it ideal for a wide range of applications.

Supporting frame system

Cladcolour is suitable for many system configurations, including onto timber battens and metal top hats.

Allface is our scalable, highly versatile cladding fixing system based on a range of high quality brackets and support rails, suitable for offsite projects. It can be applied to most brands of exterior cladding panels and is compatible with all common façade finishes.



Ancillaries

Benx supplies a full range of ancillary products for the installation of rainscreen facades and external wall insulation systems, including fixings, cavity barriers, insulation and renders.





Cladcolour

Benefits for specifiers and contractors

System Benefits

Streamlined processes

You deal with one company with all of the key elements incorporated into the system testing. As a single source for all the necessary system components, we can save you time and money.

Installation efficiency

Our CAD take-off and optimisation process for certain elements helps to ensure you only buy the materials you need. Pre-cut, pre-drilled panels, supplied to your specific requirements.

Versatility

With extensive experience on new build and recladding projects, we supply to both markets.

Comprehensive technical support

- Full system specification (H92)
- System details incorporating all key elements from one source
- Thermal and condensation calculations (project size dependant)
- Wind loading calculations (project size dependant)
- Technical support BS EN 13501 classification, BS EN 1364, BS, EN 1365, TGD 19 testing and other fire related façade considerations
- Support framing design, including full location drawings for all framing components (Allface only)
- We can support in assessing cavity barrier suitability in accordance with building regulations*

Guaranteed to perform

The system is highly durable, having an expected certified service life in excess of 30 years. We offer a 15-year product guarantee, and carry PI insurance for system design and related services.

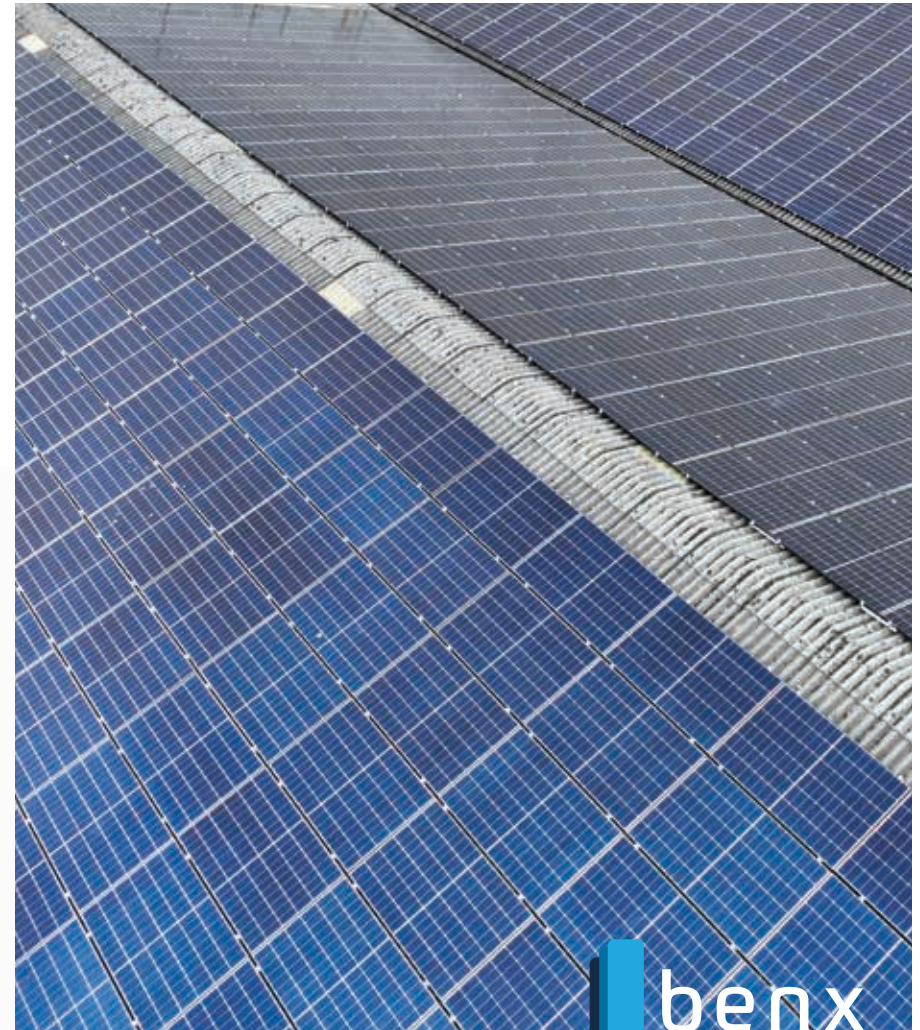


Learn More
Scan QR code
to find out more.

Benx is not responsible for decisions related to the fire safety of the facade installation

Cladcolour Production

Cladcolour is a UK-finished and fabricated product using the latest coating technology and equipment at our state-of-the-art facility in Newcastle-under-Lyme. Based in the heart of the county, we are ideally located to supply our materials anywhere in the UK.



With significant investment in manufacturing equipment, our state-of-the-art facility in Newcastle-under-Lyme houses some of the best coating machinery available today.

The addition of a huge solar panel installation has also helped reduce our environmental impact and provide energy security for our future.

Strength, stability
and durability

Our other portfolio

Category	Product/System	Description	Fire Classification	Certification, approvals, testing
Boards	Multipurpose	Highly versatile cellulose fibre-cement building board, offering excellent strength, weathering and acoustic properties.	A1	BBA
	DensGlass	High performance sheathing board that consists of a fibreglass mat with a gypsum core which is both lightweight and easy to cut to shape.	A1	BBA
	Y-Wall	High-quality flexible calcium silicate cement based building board. Offers excellent fire properties as well as high levels of dimensional stability	A1	BBA
	Cemboard	Rigid, medium density, high-performance cement bonded particle building board which offers great strength and excellent acoustic properties.	B-s1, d0	
Support Framing	Z-profile; Top Hat section; Allface support frame	Suitability: Low-to-mid rise buildings; Cavity depth 38mm or 50mm Suitability: Low-to-mid rise buildings; horizontal or vertical; Cavity depth 25mm Suitability: Mid-to-high rise buildings; Cavity depth 50mm-300mm +	A1	Allface - KIWA BDA
Façade Systems	RendaClad system	A seamless rendered or brick slip rainscreen system on to LSF or timber framed structures	System - A2	BBA, BOPAS, CWCT tested slips and render
	Cavity System 1 & 2	Typically used on lightweight steel framed structures to create a void between the cladding and the sheathed framed structure. Available in a render (Mineral or silicone) or brick slip finish.	Primary cavity components. System A1 and A2 options	KIWA BDA, CWCT tested slips
	Supertech Weatherboard system	Fully-ventilated rainscreen cladding system which has an appearance of traditional timber cladding but the durability and strength of cellulose fibre cement.	System - A1	BBA
	Safewall with Swisspearl	Through-wall certified system with Swisspearl coloured fibre cement panels.	System - A2	KIWA BDA (full through-wall certification); BBA (panel only)
	Safewall with Rockpanel	Through-wall system with coloured Rockpanel basalt bonded panels.	System - A2	KIWA BDA (through-wall certification) CWCT tested
	Safewall with Luxe Clad	Through-wall system with coloured solid aluminium panels.	System - A1	Loxe Coat - KIWA BDA (through-wall certification) CWCT tested
	SLIPFAST® mechanically fixed brick slip system	Rainscreen system suitable for timber frame (up to 18m), SFS (up to and above 18m).	System 1 - A2 System 2 - A1	KIWA BDA, CWCT tested
	Direct Fix Systems	External wall insulation systems specifically for framed structures where the insulation is fixed directly back to the sheathing board.	System - up to A1 dependent on components used	BBA onto timber frame. KIWA BDA onto masonry and LSF



Cladcolour®

Cladcolour®

Innovative Facades

Colour-through fibre cement panel systems with endless design possibilities to create unique, timeless facades



© 2022 BENX Limited. Supertech, RCM, SPS Envirowall are registered trademarks of BENX. All rights reserved. Warranties applies to our cement products. See www.benx.co.uk



Lonsdale Chambers
Lonsdale Street
Stoke-on-Trent
Staffordshire ST4 4BT

0845 519 8641 benx.co.uk

