



Cladcolour®

Innovative Facades



Cladcolour®

Innovative Façades

Cladcolour Facade Panels have been created to fulfil the criteria required of a beautiful, durable and safe building design.

With a spectrum of colour and effect options, Cladcolour can be used as the decorative element of any rainscreen solution bringing stunning designs to life. The base material of the panels are fibre cement or Calcium Silicate, a product that is ideal for this application. In addition to its inherent stability, durability and fire safety properties, we are proud to use one of the most environmentally acceptable modern building materials currently available.

With Cladcolour, Benx can help bring you realise your aesthetic vision..



Cladcolour®

Innovative Facade Systems

Contents

Built on innovation & quality	4
Sustainability at our core	5
Cladcolour Cladding System	6
Cladcolour Collection	7
Cladcolour MP	8
Cladcolour HD Naturals	10
Cladcolour HD Solids	12
Products for new build construction	14
Cladcolour Benefits	16
Cladcolour Production	17
Portfolio	19

Built on innovation and quality

Our success has been built on decades of rigorous testing, technical know-how and innovation. But we never stand still. We always strive for safer, more cost-effective, sustainable façade solutions. This constant evolution means we endeavor to offer the best innovation in the market.

Inspired Thinking

Understanding the needs and objectives of our customers is vital when developing new systems. Through collaboration, knowledge and experience, we create concepts and prototype drawings to address the current and emerging needs of our customers. Working closely with our supply partners, we draw upon their latest components to provide the best in product innovation. Through our collaborative approach, we help you create outstanding buildings with stunning, high-quality façades.



Outstanding buildings with stunning façades.



Certifications and more

Our products and systems are backed by one of the strongest portfolios of testing and certifications in the façades industry. In addition to BBA and KIWA BDA Agréments, some of our systems are also certified or tested by CWCT or Bopas. With these accolades, you can be sure that our façade systems have been independently verified and are fit for purpose.

Test, test, test

Rigorous testing lies at the heart of our product development process. By independently testing our products and systems, we can be sure they meet the highest standards of safety and durability. We pay particular attention to fire safety and many of our products and systems are A1-rated (non-combustible). Working with leading independent test houses, we also test for strength and stability, thermal insulation, resistance to moisture and durability.

Sum of the best parts

A system is only as good as its constituent parts. We source the best components from our extensive global supply chain, only selecting proven materials from resilient suppliers. Independent factory audits ensure that quality standards are met consistently. Because we focus on each component as well as the overall result, you can be sure our systems comprise the best possible parts. Where possible UK manufacturing and lower carbon footprint focus very highly in our selection process.

Strength, stability and durability



Our social and community responsibilities reflect our values as a business.

We are committed to supporting fair working practices as well as charities and the communities in which we operate, by donating our time, resources, and funds to organisations that share our values and work towards a better world.

Through these efforts, we hope to create a lasting legacy and contribute to a more sustainable and equitable future for all.

Sustainability at our core

Our commitment to environmental sustainability is underpinned by our ISO14001 (Environmental Management System) and ISO50001 (Energy Management System) certifications.

We are committed to operating at all times in accordance with all relevant environmental legislation and regulations and are constantly seeking ways to improve our performance. We prioritise a wide range of actions that help reduce climate impacts.

Energy Efficiency

We constantly seek ways to enhance the energy efficiency of our operations. The implementation of a 4100KW solar panel system at our Parkhouse fabrication unit in 2023 is just one of these measures. The panel optimisation system we use to produce the Cladcolour panel means the majority of panels are pre-cut prior to coating. This may seem a small point, but it has an enormous impact on wastage and overall efficiency. By pre-cutting before coating significantly reduces the amount of panel that is unnecessarily thrown away. This has a positive impact on cost as well as massively reducing unnecessary on-site waste.

Waste and Recycling

Our in-house fabrication processes allow us to reduce waste considerably. Wherever possible, we try to re-use or recycle waste materials.

Renewables

We source only renewable energy and, wherever possible, we utilise our sites for renewable energy generation.

Embodied Carbon

We work closely with our extensive supply chain to find ways to reduce the embodied carbon of our products and systems.

Continuous Review

We constantly monitor our environmental performance to establish benchmarks for continuous improvement and we regularly review our environmental policy to take into account stakeholder views, updates to legislation, and any changes in our environmental impacts.



Cladcolour Cladding System

Cladcolour are high performance decorative exterior cladding panels in a range of finishes, colours and effects.

The Benx panel range initially started with our Supertech timber effect planks, but with the introduction of Cladcolour, Benx now brings an exciting array of options to our customers.

Some of Cladcolour's key benefits:

Economics

- Although Cladcolour is still cut from a "master sheet", for maximum efficiency, it is primarily finished after being cut and drilled. This can significantly reduce the wastage of finished product.
- By reducing production waste, we are able to offer Cladcolour at competitive rates.
- For solid and effect colours we have more flexibility of base material colour (HD only) allowing better utilisation of prior cut panels.

Fire – A1 to BS EN 13501

- Our Cladcolour MP is BS EN 13501 classified A1, and this includes fixing options back to both timber battens and metal support frame, with our HD panels A1 to metal support frame and to timber support frame. Please contact our technical services for any specific project discussions.

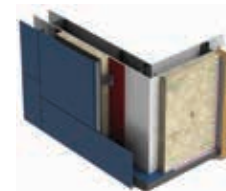
Certification

- Cladcolour MP and HD are now fully Agrément certified for use on both masonry and framed structures, with a variety of supporting subframes including timber and metal support frames.
- Cladcolour MP and HD are also under KIWA BDA Agrément assessment for inclusion in our Safewall family of Agréments.

Improved lead times

- Due to unique way of processing the product and our optimised panels being finished after cutting and drilling, this allows us greater flexibility of base panel and coating, reducing our lead times to customers.

Flexible System Configurations



Cladcolour System on Top Hat Sections

*Also suitable for fitting to Timber Battens and Allface Mounting System.



Cladcolour Collection

Cladcolour comes in two main lines, **Cladcolour MP** and **Cladcolour HD**.

Cladcolour MP

This is our most competitive product and is available in both 9mm and 12mm as standard. It is available in a wide range of standard solid colours, which are shown on page 9 of this brochure.

Cladcolour MP comes with a smooth slightly mottled effect as standard, providing a high quality natural finish to the panel.

Cladcolour HD

Cladcolour HD is available in a range of finishes as listed below.

Cladcolour HD Natural

Cladcolour HD Natural come in 10 standard colour variations. The product is finished with a clear sealer to enhance durability, and is available in both a grain and polished finish.

Cladcolour HD Solid

Our Solid range comes in 2 variations.

Solid-M is a through coloured board in one of our 10 standard colours, with a finish coat matching as close as possible to the through colour of the base panel.

Our **Solid-G** comes with a core panel in grey with a wide range of exciting solid colours shown on page 13 of this brochure.

Both **Solid-M** and **Solid-G** are available in either smooth or grained texture.

Non-standard colours and gloss

On **Cladcolour MP**, we are able to do other non-standard colours subject to a minimum production run of 500m². Also, although our standard gloss level of finish of our products is around 15%, we are able on most colours to slightly reduce or increase the gloss level to change panel finish, again based on a minimum production run of 500m².



Cladcolour MP

Cladcolour MP is a fibre cement based cladding panel, available in a wide range of standard colours, but also available in other RAL and NCS colours subject to minimum quantity.



Information

Our high performance coatings ensure a durable and attractive finish to any façade. With a fire classification of A1 to BS EN 13501, our MP range offers industry leading fire characteristics fitted back to both timber or metal support frames.

Panel Thickness

Available in both 9mm and 12mm as standard

(other thicknesses available on request and subject to minimum order quantity)

Master Panel Sizes

2400mm x 1200mm
3000mm x 1200mm



Technical Data

Density
1375kg/m³
Average MOR (Control)
12.0 MPa
Thermal Conductivity
0.12W/mk

Fire Classification:

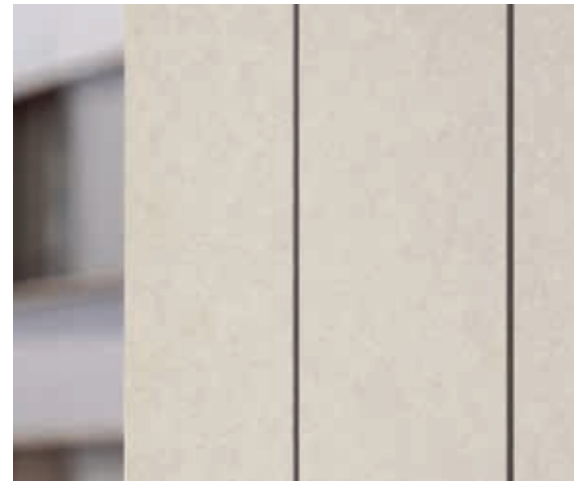
A1 BS EN 13501 options on both timber and metal support frame.

								
Arctic White MP-001	Concrete Mist MP-002	Soft Shell MP-003	Pale Linen MP-004	Aqua Frost MP-005	Carbon Black MP-006	Ironcore MP-007	Steel Smoke MP-008	Graphite Blue MP-009
								
Desert Clay MP-010	Burnt Cocoa MP-011	Slate Lavender MP-012	Dusty Violet MP-013	Vanilla Cream MP-014	Brick Red MP-015	Forest Deep MP-016	Silver Haze MP-017	Soft Graphite MP-018
								
Earthstone MP-019	Olive Mist MP-020	Clay Rose MP-021	Rustic Terracotta MP-022	Canyon Clay MP-023	Sunset Brick MP-024	Buttermilk MP-025	Golden Straw MP-026	Gunmetal Grey MP-027
								
Zesty Amber MP-028	Warm Wheat MP-029	Golden Ochre MP-030	Sage Blue MP-031	Moss Beige MP-032	Pine Mist MP-033	Soft Moss MP-034	Blue Slate MP-035	Obsidian Grey MP-036
								
Cool Steel MP-037	Storm Blue MP-038	Silver Ash MP-039	Almond Cream MP-040	Warm Ivory MP-041	Porcelain MP-042	Pale Dune MP-043	Soft Vanilla MP-044	



Cladcolour HD Natural

Cladcolour HD Natural is a high density calcium silicate external cladding panel. Our Natural range is available in 10 standard colour variations. The through coloured product is finished with a clear sealer to enhance durability, and is available in both a grain and polished finish.



Information

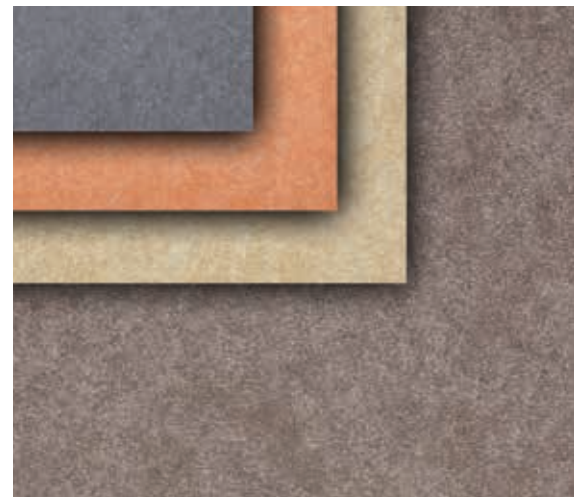
With a fire classification of A1 to BS EN 13501, our HD Natural range offers industry leading fire characteristics fitted back to metal support frames and timber support frame*.

Panel Thickness

Available in both 9mm and 12mm as standard, with 15mm thickness also available dependent on minimum quantity.

Panel Size

2440mm x 1220mm
3050mm x 1220mm



Technical Data

Density
1590kg/m³
Average MOR (Control)
> 13.55 MPa
Thermal Conductivity
0.48W/mk

Fire Classification:
A1 BS EN 13501 on metal support frame and timber.

*Please note that support frame does not refer to structural frame, rather the supporting battens or channel/rails holding the cladding panels.

Grained

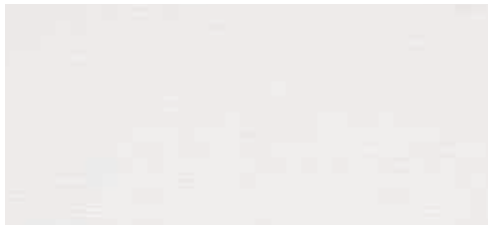
Standard



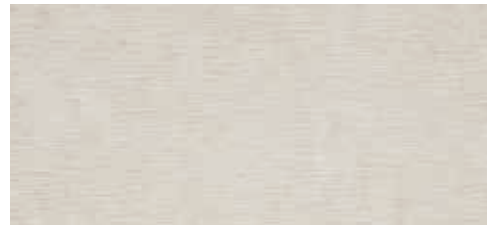
Sandstone HD-GR001



Basalt HD-GR002

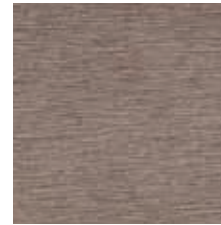


Chalk HD-GR006



Limestone HD-GR007

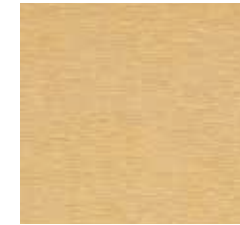
Special



Walnut Timber
HD-GR003



Urban Concrete
HD-GR004



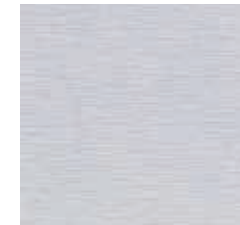
Ochre Stone
HD-GR005



Terracotta Clay
HD-GR008



Rusted Steel
HD-GR009



Zinc Alloy
HD-GR010

Plain

Standard



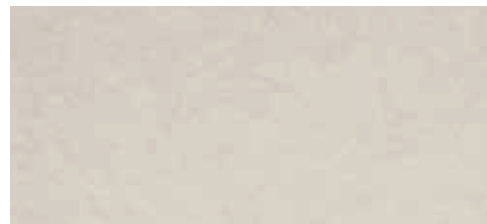
Sandstone HD-PL001



Basalt HD-PL002



Chalk



Limestone HD-PL007

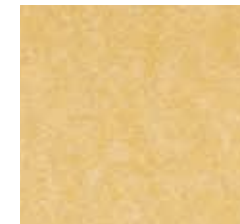
Special



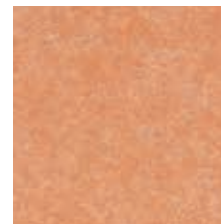
Walnut Timber
HD-PL003



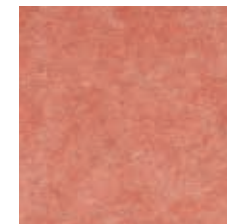
Urban Concrete
HD-PL004



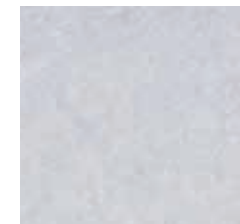
Ochre Stone
HD-PL005



Terracotta Clay
HD-PL008



Rusted Steel
HD-PL009



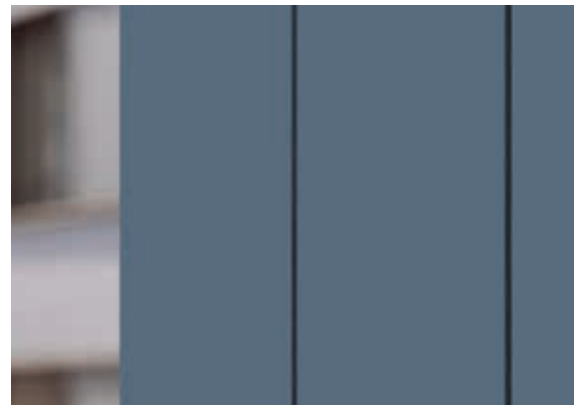
Zinc Alloy
HD-PL010



Cladcolour HD Solid

Cladcolour HD Solid is a high density calcium silicate external cladding panel. Our Solid range is available in 2 variations. **HD Solid-M** has a through coloured base panel with a top coat finish in a matching solid colour as close as possible to the through coloured base panel. **HD Solid-G** has a through coloured base panel, typically grey or ivory with a top coat finish in a variety of vibrant and building enhancing solid colours as shown on page 13.

Both **HD Solid M** and **G** are available in both grain and smooth finishes.



Information

With a fire classification of A1, our HD Solid range offers excellent fire characteristics fitted back to both metal and timber support frames*.

Panel Thickness

Available in both 9mm and 12mm as standard, with 15mm thickness also available dependant on minimum quantity.

Panel Size

2440mm x 1220mm
3050mm x 1220mm

Technical Data

Density
1590kg/m³

Average MOR (Control)
> 13.55 MPa

Thermal Conductivity
0.48W/mk

Fire Classification:
A1 BS EN 13501 on metal support frame and timber.

*Please note that support frame does not refer to structural frame, rather the supporting battens or channel/rails holding the cladding panels.



Cladcolour HD Solid-G



Amber Blaze HD-G001



Burnt Sienna HD-G002



Copper Flame HD-G003



Crimson Flame HD-G004



Ruby Red HD-G005



Mahogany Brick HD-G006



Signal Red HD-G007



Golden Honey HD-G008



Solar Glow HD-G009



Sunburst Yellow HD-G010



Desert Sand HD-G011



Spring Green HD-G012



Pine Grove HD-G013



Forest Edge HD-G014



Midnight Blue HD-G015



Signal Blue HD-G016



Skyline HD-G017



Ocean Mist HD-G018



Slate Blue HD-G019



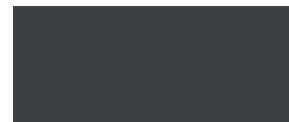
Silver Grey HD-G020



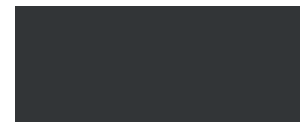
Urban Concrete HD-G021



Graphite Smoke HD-G022



Anthracite HD-G023



Charcoal Steel HD-G024



Industrial Grey HD-G025



Mist Grey HD-G026



Blue Grey HD-G027



Dusty Stone HD-G028



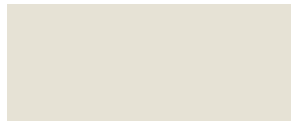
Pale Concrete HD-G029



Deep Steel HD-G030



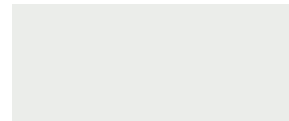
Obsidian HD-G031



Soft Stone HD-G031



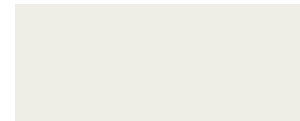
Feather Grey HD-G033



Arctic Frost HD-G034



Pearl Grey HD-G035



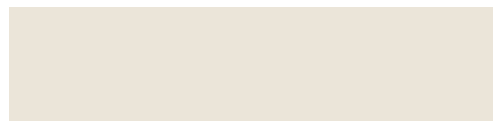
Classic White HD-G036

Solid-M

Standard



Sand Dune HD-M001



Glacier HD-M002



Stormcloud HD-M004



Almond Cream HD-M003

Special



Earthstone HD-M005



Burnt Clay HD-M007



Pebble HD-M006



Rustic Brick HD-M008



Sunset Gold HD-M009



Space Grey HD-M010



Delivering
maximum longevity

Benx Facade Components

In addition to our integrated façade systems, we offer a wide range of industry - leading components.

Exterior sheathing boards

Our sheathing board range includes A1 fire rated and BBA approved products. From timber to steel frame, high to low rise, our range of sheathing boards, offers a solution for all structural applications.



RCM Y-Wall is a market-leading, A1 fire-rated, calcium silicate sheathing board. This BBA certified product is perfect for use as a fire rated sheathing board. Offering excellent fire properties as well as high levels of dimensional stability, Y-wall is an exceptional board for use in multiple applications.



DensGlass Sheathing is a high-performance, A1 fire-rated sheathing board, constructed with a durable fiberglass mat and a gypsum core. Lightweight and easy to install using the scribe-and-snap method, DensGlass is the leading specified sheathing board in the U.S., boasting an exceptional 30+ year track record of reliability and performance.



RCM Multipurpose is an A1 non-combustible, cellulose fibre cement board. RCM Multipurpose is a highly versatile cellulose fibre cement building board, offering excellent strength, weathering and flexibility of curved facades properties. It is available as building boards and soffit strips.

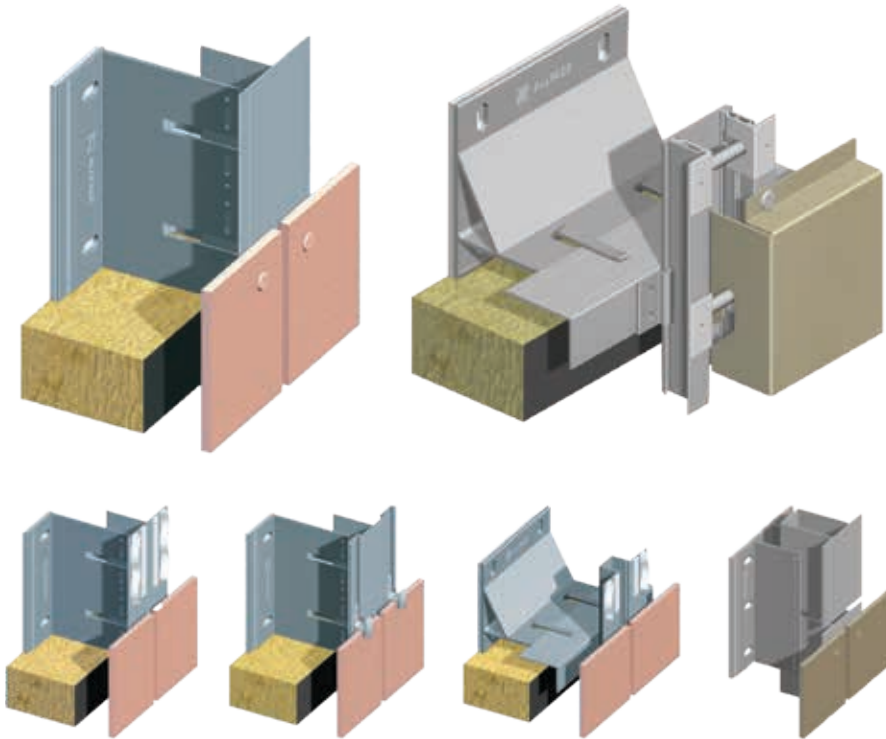


RCM Cemboard is a rigid, medium-density, cement-bonded particle board that combines exceptional strength and stability with the easy workability of wood. Offering superior acoustic performance and high impact resistance, Cemboard also boasts excellent weathering properties, making it ideal for a wide range of applications.

Supporting frame system

Cladcolour is suitable for many system configurations, including onto timber battens and metal top hats.

Allface is our scalable, highly versatile cladding fixing system based on a range of high quality brackets and support rails, suitable for offsite projects. It can be applied to most brands of exterior cladding panels and is compatible with all common façade finishes.



Ancillaries

Benx supplies a full range of ancillary products for the installation of rainscreen facades and external wall insulation systems, including fixings, cavity barriers, insulation and renders.





Cladcolour

Benefits for specifiers and contractors

Streamlined processes

You deal with one company with all of the key elements incorporated into the system testing. As a single source for all the necessary system components, we can save you time and money.

Installation efficiency

Our CAD take-off and optimisation process for certain elements helps to ensure you only buy the materials you need. Pre-cut, pre-drilled panels, supplied to your specific requirements.

Versatility

With extensive experience on new build and recladding projects, we supply to both markets.

Comprehensive technical support

- Full system specification (H92)
- System details incorporating all key elements from one source
- Thermal and condensation calculations (project size dependant)
- Wind loading calculations (project size dependant)
- Technical support BS EN 13501 classification, BS EN 1364, BS, EN 1365, TGD 19 testing and other fire related façade considerations
- Support framing design, including full location drawings for all framing components (Allface only)
- We can support in assessing cavity barrier suitability in accordance with building regulations*

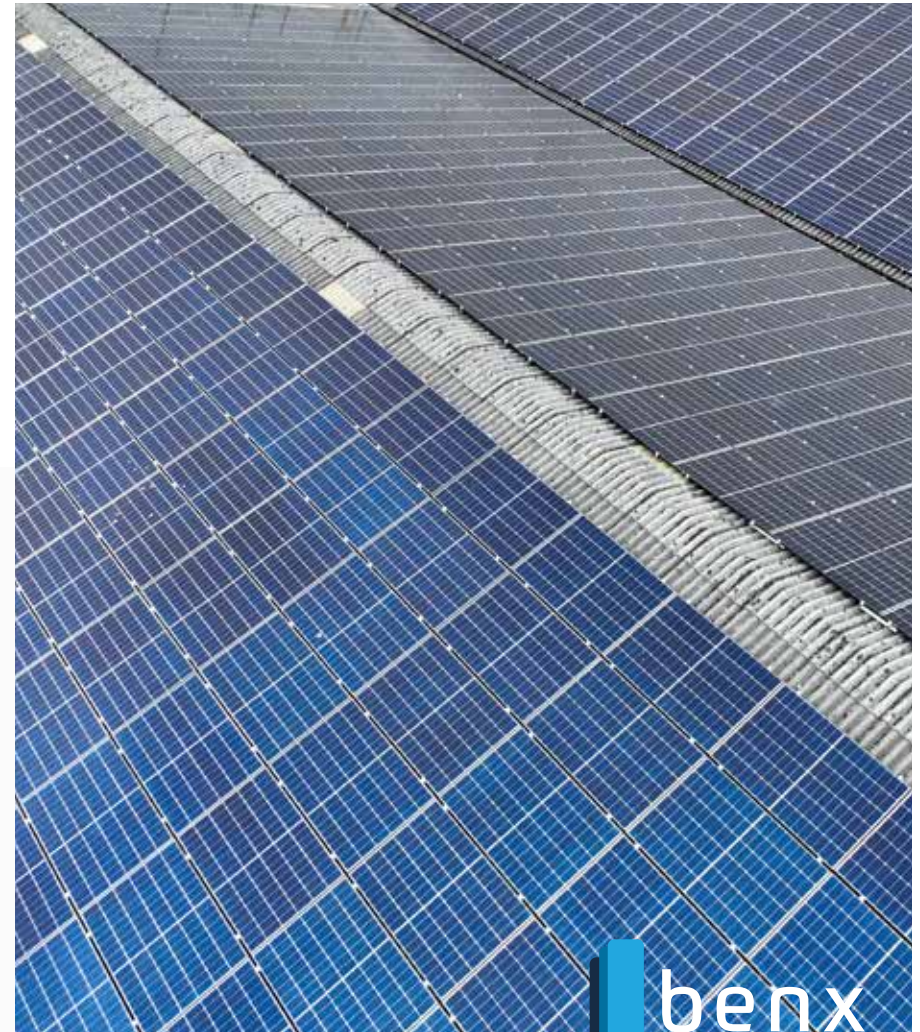
Guaranteed to perform

The system is highly durable, having an expected certified service life in excess of 30 years. We offer a 15-year product guarantee, and carry PI insurance for system design and related services.

Benx is not responsible for decisions related to the fire safety of the facade installation

Cladcolour Production

Cladcolour is a UK-finished and fabricated product using the latest coating technology and equipment at our state-of-the-art facility in Newcastle-under-Lyme. Based in the heart of the county, we are ideally located to supply our materials anywhere in the UK.



With significant investment in manufacturing equipment, our state-of-the-art facility in Newcastle-under-Lyme houses some of the best coating machinery available today.

The addition of a huge solar panel installation has also helped reduce our environmental impact and provide energy security for our future.

Strength, stability
and durability

Our other portfolio

Category	Product/System	Description	Fire Classification	Certification, approvals, testing
Boards	Multipurpose	Highly versatile cellulose fibre-cement building board, offering excellent strength, weathering and acoustic properties.	A1	BBA
	DensGlass	High performance sheathing board that consists of a fibreglass mat with a gypsum core which is both lightweight and easy to cut to shape.	A1	BBA
	Y-Wall	High-quality flexible calcium silicate cement based building board. Offers excellent fire properties as well as high levels of dimensional stability	A1	BBA
	Cemboard	Rigid, medium density, high-performance cement bonded particle building board which offers great strength and excellent acoustic properties.	B-s1, d0	
Support Framing	Z-profile; Top Hat section; Allface support frame	Suitability: Low-to-mid rise buildings; Cavity depth 38mm or 50mm Suitability: Low-to-mid rise buildings; horizontal or vertical; Cavity depth 25mm Suitability: Mid-to-high rise buildings; Cavity depth 50mm-300mm +	A1	Allface - KIWA BDA
Façade Systems	RendaClad system	A seamless rendered or brick slip rainscreen system on to LSF or timber framed structures	System - A2	BBA, BOPAS, CWCT tested slips and render
	Cavity System 1 & 2	Typically used on lightweight steel framed structures to create a void between the cladding and the sheathed framed structure. Available in a render (Mineral or silicone) or brick slip finish.	Primary cavity components. System A1 and A2 options	KIWA BDA, CWCT tested slips
	Supertech Weatherboard system	Fully-ventilated rainscreen cladding system which has an appearance of traditional timber cladding but the durability and strength of cellulose fibre cement.	System - A1	BBA
	Safewall with Swisspearl	Through-wall certified system with Swisspearl coloured fibre cement panels.	System - A2	KIWA BDA (full through-wall certification); BBA (panel only)
	Safewall with Rockpanel	Through-wall system with coloured Rockpanel basalt bonded panels.	System - A2	KIWA BDA (through-wall certification) CWCT tested
	Safewall with Luxe Clad	Through-wall system with coloured solid aluminium panels.	System - A1	Loxe Coat - KIWA BDA (through-wall certification) CWCT tested
	SLIPFAST® mechanically fixed brick slip system	Rain screen system suitable for timber frame (up to 18m), SFS (up to and above 18m).	System 1 - A2 System 2 - A1	KIWA BDA, CWCT tested
	Direct Fix Systems	External wall insulation systems specifically for framed structures where the insulation is fixed directly back to the sheathing board.	System - up to A1 dependent on components used	BBA onto timber frame. KIWA BDA onto masonry and LSF



Cladcolour®

Cladcolour®

Innovative Facades



© 2022 BENX Limited. Supertech, RCM, SPS Envirowall are registered trademarks of BENX. All rights reserved. Warranties applies to our cement products. See www.benx.co.uk



Lonsdale Chambers
Lonsdale Street
Stoke-on-Trent
Staffordshire ST4 4BT

0845 519 8641 **benx.co.uk**

Disclaimer

The information in this brochure is presented as general information and no representation or warranty is expressly or impliedly given as to its accuracy, completeness or correctness. It does not constitute part of a legal offer or contract. While every effort has been made to ensure its accuracy, this brochure may unintentionally include inaccuracies of errors. The user must verify all the details and specifications independently with Benx prior to concluding any decision to purchase or use the Company's products. In no event shall the Company be liable to the user or any third party for damages, losses and caused of action (including but not limited to negligence), errors, injury, whether direct, indirect, consequential, or incidental, suffered or incurred by any person/s or due to any use and/or inability to use this brochure or information therein. Benx reserves the right to terminate, revoke, modify, alter, add and delete any of the information in the brochure. The Company shall be under no obligation to notify the user of any such amendment.

Images included in this brochure consist of Benx projects and stock imagery. The available range of finishes may, in certain situations, differ from those shown in the project images.

Version CLAD002

