



Cladcolour®

Innovative Facades



# Cladcolour®

Innovative Façades

Cladcolour® Facade Panels are designed to deliver beautiful, durable and safe buildings.

With a wide spectrum of colour and effect options, Cladcolour® can be used as the decorative element of any rainscreen solution bringing stunning designs to life. The base material of the panels is calcium silicate or fibre cement, depending on the selected Cladcolour® variant (MP or HD, respectively). In addition to its inherent stability, durability and fire safety properties, Cladcolour® offers one of the most versatile range of design options currently available.

With Cladcolour®, Benx can help bring you realise your aesthetic vision.





# Cladcolour®

Innovative Facade Systems

## Contents

Built on innovation & quality	3
Sustainability at our core	4
<b>Cladcolour Rainscreen Panels</b>	5
<b>Cladcolour Design Options</b>	7
<b>Cladcolour MP</b>	8
<b>Cladcolour HD Solids</b>	9
<b>Cladcolour MP &amp; HD Standard Colour Range</b>	10
<b>Cladcolour HD Naturals</b>	11
<b>Safewall with Cladcolour</b>	13
<b>Cladcolour Production</b>	15
<b>Our Portfolio</b>	17

## Built on innovation and quality

Our success has been built on decades of rigorous testing, technical know-how and innovation. We continuously strive for safer, more cost-effective, sustainable façade solutions. This constant evolution means we can offer some of the most innovative products in the market.

### Inspired Thinking

Understanding the needs and objectives of our customers is vital when developing new systems. Through collaboration, knowledge and experience, we create concepts and prototypes to address the current and emerging needs of our customers. Working closely with our supply partners, we draw upon their latest components to provide the best in product innovation. Through this collaborative approach, we help you create outstanding buildings with stunning, high-quality façades.



Outstanding buildings with stunning façades.



### Certifications and more

Our products and systems are backed by one of the strongest portfolios of testing and certifications in the façades industry. In addition to BBA and KIWA BDA Agréments, some of our products and systems are also certified or tested by CWCT or Bopas. With these accolades, you can be confident that our façade systems have been independently verified as fit for purpose.

### Test, test, test

Rigorous testing lies at the heart of our product development process. By independently testing our products and systems, we ensure they meet the highest standards of safety and durability. We pay particular attention to fire safety and many of our products and systems are A1-rated (non-combustible). Working with leading independent test houses, we also test for strength and stability, thermal insulation, resistance to moisture and durability.

### Sum of the best parts

A façade system is only as good as its constituent parts. We source the best components from our extensive global supply chain, only selecting proven materials from resilient suppliers. Independent factory audits ensure that quality standards are met consistently. Because we focus on each component as well as the overall result, you can be sure our systems comprise the best possible parts. Where possible UK manufacturing and lower carbon footprint are prioritised in our selection process.

### Strength, stability and durability





Our social and community responsibilities reflect our values as a business.

We are committed to supporting fair working practices as well as charities and the communities in which we operate, by donating our time, resources, and funds to organisations that share our values and work towards a better world.

Through these efforts, we hope to create a lasting legacy and contribute to a more sustainable and equitable future for all.

## Sustainability at our core

---

Our commitment to environmental sustainability is underpinned by our ISO14001 (Environmental Management System) and ISO50001 (Energy Management System) certifications.

We are committed to operating at all times in accordance with all relevant environmental legislation and regulations and are constantly seeking ways to improve our performance. We prioritise a wide range of actions that help reduce climate impacts.

### Energy Efficiency

We constantly seek ways to enhance the energy efficiency of our operations. The implementation of a 4100KW solar panel system at our Parkhouse fabrication unit is just one of these measures.

### Waste and Recycling

The panel optimisation system we use to produce Cladcolour means the majority of panels are pre-cut prior to coating. This may seem a small point, but it has an enormous impact on wastage and overall efficiency. By pre-cutting before coating significantly reduces the amount of panel that is unnecessarily thrown away. Our in-house fabrication processes allow us to reduce waste considerably. Wherever possible, we try to re-use or recycle waste materials.

### Renewables

We source only renewable energy and, wherever possible, we utilise our sites for renewable energy generation.

### Continuous Review

We constantly monitor our environmental performance to establish benchmarks for continuous improvement and we regularly review our environmental policy to take into account stakeholder views, updates to legislation, and any changes in our environmental impacts.





# Cladcolour® Rainscreen Panels

**Cladcolour®** panels are high performance decorative exterior cladding panels in a range of finishes and colours.

## Economics

- Although Cladcolour® is still cut from a “master sheet”, for maximum efficiency, it is primarily coated and finished after being cut and drilled. This can significantly reduce the wastage of finished product.
- By reducing production waste, we are able to offer Cladcolour® at competitive rates.
- For solid colours we have more flexibility of base material colour (HD only) allowing better utilisation of prior cut panels.

## Fire – A1 to BS EN 13501

- Cladcolour® is BS EN 13501 classified A1 (non-combustible)

## Certification

- Cladcolour® panels are KIWA BDA Agrément certified for use on both masonry and framed structures, with a variety of supporting subframes, including timber and metal support frames.
- Cladcolour® is also a design option for our Safewall® Agrément-certified outer through-wall systems.

## Improved lead times

- Our unique way of processing the product with our optimised panels being finished after cutting and drilling, allows us greater flexibility of base panel and coating, thereby reducing our lead times to customers.

## Flexible Fixing Options

- Cladcolour® offers fixing options back to both timber battens and metal support frame.





cladcolour®



## Cladcolour® Design Options

Cladcolour® comes in two ranges, **Cladcolour® MP** & **Cladcolour® HD**.

### Cladcolour® MP

Cladcolour MP is a competitively-priced fibre cement cladding panel in both 9mm and 12mm as standard. It is available in a wide range of standard solid colours.

Cladcolour MP comes with a smooth slightly mottled effect as standard, providing a high quality natural finish to the panel.

Cladcolour MP is offered in a wide range of 45 standard colours.

### Cladcolour® HD

Cladcolour **HD** is a high-density calcium silicate external cladding panel available in a range of finishes as listed below.

#### Cladcolour® HD Solid

Our HD solid range has a core grey panel with a wide range of 45 standard colours available in both smooth and grained textures.

#### Cladcolour® HD Natural

Cladcolour **HD** Natural come in 10 standard colour variations. The product is finished with a clear sealer to enhance durability, and is available in both a grain and polished finish.





## Cladcolour MP

---

**Cladcolour MP** is a fibre cement based cladding panel, available in a wide range of standard colours.



### Details

---

Our high performance coatings ensure a durable and attractive finish to any façade. With a fire classification of A1 to BS EN 13501, our MP range offers industry leading fire characteristics fitted back to both timber or metal support frames.

#### Panel Thickness

Available in both 9mm and 12mm as standard

(other thicknesses available on request and subject to minimum order quantity)

#### Master Panel Sizes

2400mm x 1200mm  
3000mm x 1200mm

#### Technical Data

Density

1375kg/m<sup>3</sup>

Average MOR (Control)

12.0 MPa

Thermal Conductivity

0.12W/mk

Fire Classification:

A1 Non Combustible

Classification BS EN13501

#### Fixing Options:

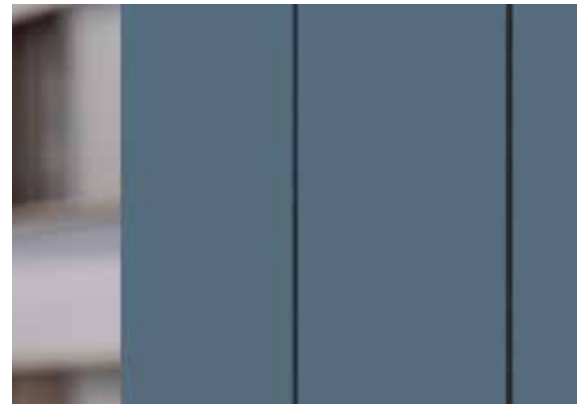
Metal support framing or timber battens





## Cladcolour HD Solid

Cladcolour HD Solid is a high density calcium silicate external cladding panel, available in 45 vibrant standard colours in both smooth and grained finishes



### Details

With a fire classification of A1, our HD Solid range offers excellent fire characteristics fitted back to both metal and timber support frames\*.

#### Panel Thickness

Available in both 9mm and 12mm as standard, with 15mm thickness also available dependant on minimum quantity.

#### Panel Size

2440mm x 1220mm  
3050mm x 1220mm

#### Technical Data

Density

1590kg/m<sup>3</sup>

Average MOR (Control)

> 13.55 MPa

Thermal Conductivity

0.48W/mk

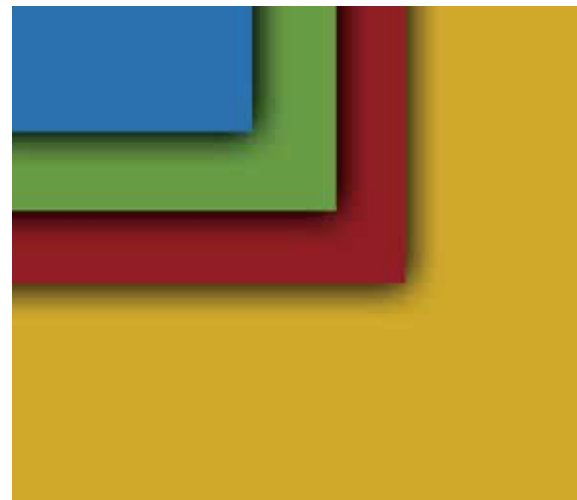
Fire Classification:

A1 Non Combustible

Classification BS EN13501

#### Fixing Options:

Metal support framing or timber battens





# Cladcolour MP & HD Standard Colour Range

									
Glacier Glow	Coastal Cream*	Arctic White*	Glacial White	Cotton Glow*	Soft Shell	Vanilla Cream	Golden Dawn	Buttery Glow	Twilight Flame
									
Solar Glow*	Golden Honey*	Peach Reef	Amber Blaze	Inferno Red	Copper Flame*	Signal Red*	Barnwood Red*	Brick Red	Scarlet Shadow
									
Scarlet Royale	Loft Gray	Cloudveil	Silver Thread	Pavement Gray	Steel Gauntlet*	Ironcore*	Granite Dust	Steel Core	Phantom Black
									
Carbon Black*	Starlit Sky*	Aqua Frost	Aqua Breeze	Benx Blue*	Mediterranean Breeze	Signal Blue*	Midnight Blue*	Agave Haze*	Olive Mist
									
Olive Grove*	Shiftstone	Driftwood*	Forest Edge	Forest Deep*	Pine Grove	Tropic Moss	Golden Drape	Terracotta Ridge*	Woodland Hush

\*Colour samples held stock; other standard colour range samples are available upon request



## Cladcolour HD Natural

**Cladcolour** HD Natural is a high density calcium silicate external cladding panel. Our Natural range is available in 10 colour variations; 5 standard and 5 special. The through-coloured product is finished with a clear sealer to enhance durability, and is available in both a grain and polished finish.



### Details

With a fire classification of A1 to BS EN 13501, our HD Natural range offers industry leading fire characteristics fitted back to metal support frames and timber support frame\*.

#### Panel Thickness

Available in both 9mm and 12mm as standard, with 15mm thickness also available dependent on minimum quantity.

#### Panel Size

2440mm x 1220mm  
3050mm x 1220mm



### Technical Data

Density  
1590kg/m<sup>3</sup>  
Average MOR (Control)  
> 13.55 MPa  
Thermal Conductivity  
0.48W/mk  
Fire Classification:  
A1 Non Combustible  
Classification BS EN13501

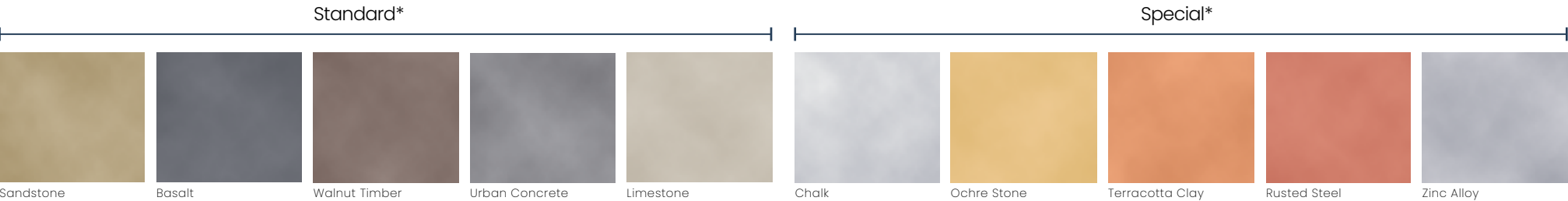
#### Fixing Options:

Metal support framing or timber battens

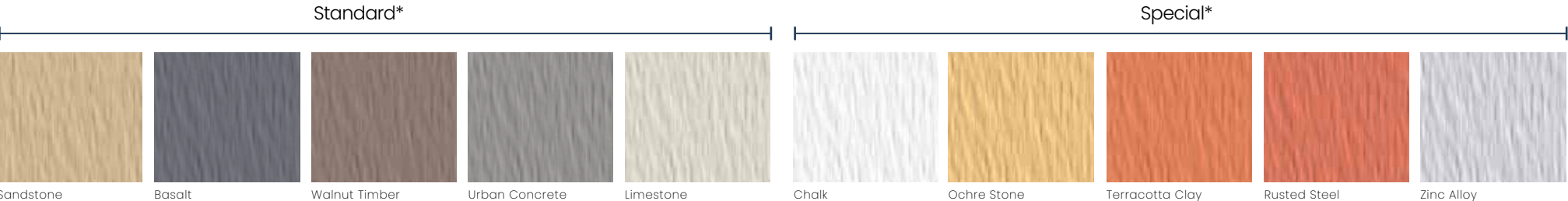


# Cladcolour HD Natural Range

## HD Natural Plain



## HD Natural Grained



\* HD Natural range standard colours are stocked items. Special colours are available subject to minimum order quantities and are available by request



## Safewall® with Cladcolour

Cladcolour is now available as a design option in our Safewall® range of certified 'outer through-wall' rainscreen systems. Designed for LGSF and steel in-fill, Safewall® allows you to specify and source a complete facade solution from a single trusted supplier.

Comprising all essential components, from high-performance sheathing boards to insulation and stylish finishes, Safewall® eliminates the need to create 'mix and match' specifications from separate components. It simplifies the process by including all key drawings, certifications, and test data from a single source, ensuring a seamless 'Golden Thread' of information.

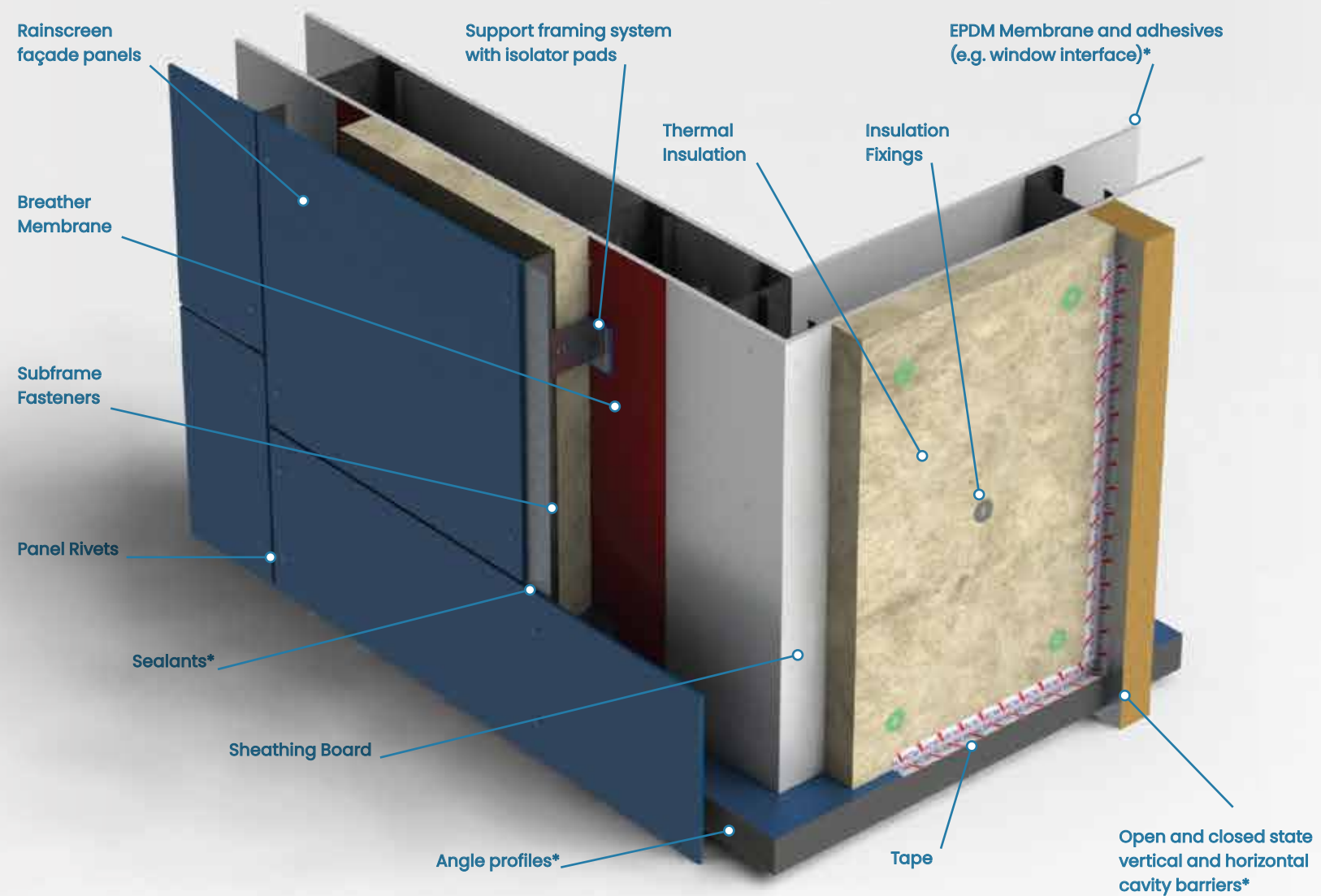
Offering A1 and A2 fire-classified systems, Safewall® can be used on both Higher-Risk Buildings (HRBs) and non-HRBs. Backed by extensive testing and certification, Safewall® puts safety and performance at the heart of your rainscreen specifications.

Available in a variety of finishes – including Cladcolour, LuxeClad, Swisspearl, Rockpanel, and more to come – Safewall® brings your architectural vision to life.

As a one-stop shop for all system components, Safewall® can offer efficiencies, resulting in time and cost savings. Designed and certified for supply chain resilience, Safewall® also features interchangeable components for ultimate flexibility.

Choose Safewall® for a simpler specification process, rigorously tested and certified systems, and a vast array of design options. Enjoy the benefits of a streamlined supply chain, consolidated documentation, and a full system guarantee – giving you peace of mind in your façade selection.





\*Denotes item is currently outside scope of Agrément certification, but can also be supplied by Benx.

## Cladcolour Production

---

**Cladcolour** is finished and fabricated in the UK using the latest coating technology and equipment at our state-of-the-art facility in Newcastle-under-Lyme. Based in the heart of the country, we are ideally located to supply customers anywhere in the UK.







With significant investment in advanced manufacturing equipment, our panels are produced using some of the best coating technology in the UK.

The addition of a large solar panel installation has helped reduce our environmental impact and provide energy security for our future.

We are proud of our facilities and would be delighted to provide a site tour.

# Our portfolio

Category	Product/System	Description	Fire Classification	Certification, approvals, testing
Boards	Multipurpose	Highly versatile cellulose fibre-cement building board, offering excellent strength, weathering and acoustic properties.	A1	BBA
	DensGlass	High performance sheathing board that consists of a fibreglass mat with a gypsum core which is both lightweight and easy to cut to shape.	A1	BBA
	Y-Wall	High-quality flexible calcium silicate cement based building board. Offers excellent fire properties as well as high levels of dimensional stability	A1	BBA
Support Framing	Z-profile; Top Hat section; Allface support frame	Suitability: Low-to-mid rise buildings; Cavity depth 38mm or 50mm Suitability: Low-to-mid rise buildings; horizontal or vertical; Cavity depth 25mm Suitability: Mid-to-high rise buildings; Cavity depth 50mm-300mm +	A1	Allface - KIWA BDA
Façade Systems	Direct Fix Systems	External wall insulation systems specifically for framed structures where the insulation is fixed directly back to the sheathing board.	System - up to A1 Dependent on components used	BBA onto timber frame. KIWA BDA onto masonry and LSF
	Cavity System 1 & 2	Typically used on lightweight steel framed structures to create a void between the cladding and the sheathed framed structure. Available in a render (Mineral or silicone) or brick slip finish.	Primary cavity components. System A1 and A2 options	KIWA BDA, CWCT tested slips
	Supertech Weatherboard system	Fully-ventilated rainscreen cladding system which has an appearance of traditional timber cladding but the durability and strength of cellulose fibre cement.	System - A1	BBA
	Safewall® with Cladcolour®	Through-wall certified rainscreen system with coloured fibre cement (MP) or calcium silicate panels (HD).	System - A1	KIWA BDA (through-wall certification); BBA (panels only)
	Safewall® with Swisspearl	Through-wall certified rainscreen system with Swisspearl coloured fibre cement panels.	System - A2	KIWA BDA (through-wall certification); BBA (panel only)
	Safewall® with Rockpanel	Through-wall certified rainscreen system with coloured Rockpanel basalt bonded panels.	System - A2	KIWA BDA (through-wall certification) CWCT tested
	Safewall® with Luxe Clad	Through-wall certified rainscreen system with coloured solid aluminium panels.	System - A1	KIWA BDA (through-wall certification) CWCT tested
	<b>SLIPFAST®</b> mechanically fixed brick slip system	Rain screen system suitable for timber frame (up to 18m), SFS (up to and above 18m).	System 1 - A2 System 2 - A1	KIWA BDA, CWCT tested
	RendaClad system	A seamless rendered or brick slip rainscreen system on to LSF or timber framed structures	System - A2	BBA, BOPAS, CWCT tested slips and render





Cladcolour®

# Cladcolour®

Innovative Facades



© 2022 BENX Limited. Supertech, RCM, SPS Envirowall are registered trademarks of BENX. All rights reserved. Warranties applies to our cement products. See [www.benx.co.uk](http://www.benx.co.uk)



Lonsdale Chambers  
Lonsdale Street  
Stoke-on-Trent  
Staffordshire ST4 4BT

**0845 519 8641** [benx.co.uk](http://benx.co.uk)

#### Disclaimer

The information in this brochure is presented as general information and no representation or warranty is expressly or impliedly given as to its accuracy, completeness or correctness. It does not constitute part of a legal offer or contract. While every effort has been made to ensure its accuracy, this brochure may unintentionally include inaccuracies of errors. The user must verify all the details and specifications independently with Benx prior to concluding any decision to purchase or use the Company's products. In no event shall the Company be liable to the user or any third party for damages, losses and caused of action (including but not limited to negligence), errors, injury, whether direct, indirect, consequential, or incidental, suffered or incurred by any person/s or due to any use and/or inability to use this brochure or information therein. Benx reserves the right to terminate, revoke, modify, alter, add and delete any of the information in the brochure. The Company shall be under no obligation to notify the user of any such amendment.

Images included in this brochure consist of Benx projects and stock imagery. The available range of finishes may, in certain situations, differ from those shown in the project images.

Version CLAD003-0126

