

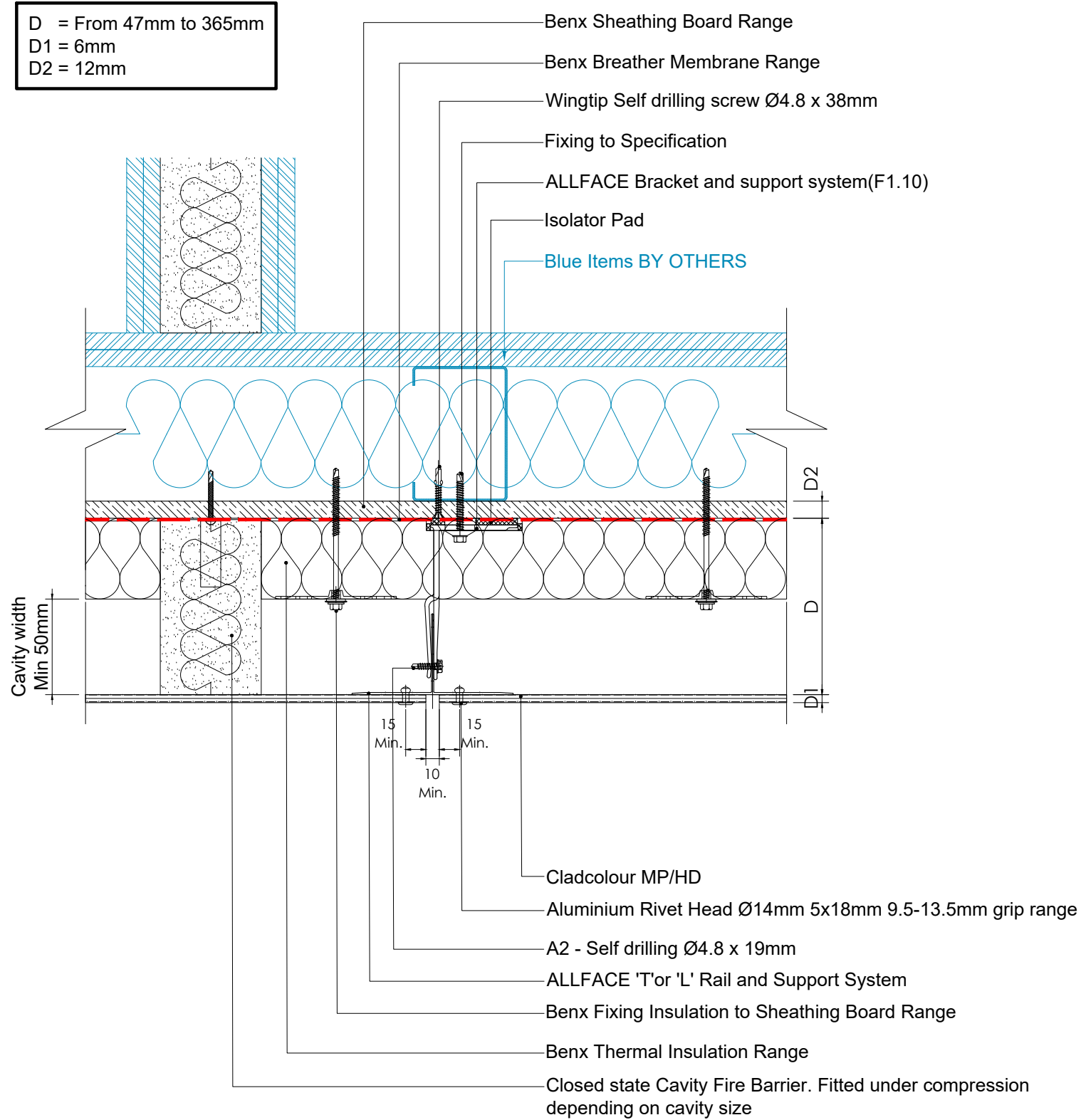
Benx Ltd, Lonsdale Chambers,  
Lonsdale Street,  
Stoke-on-Trent  
Staffordshire  
ST4 4BT  
Telephone: 0845 130 0983  
Email:  
[technicalservices@benx.co.uk](mailto:technicalservices@benx.co.uk)

All performance data & systems specifications are for systems constructed with materials & components as shown. The inclusion or substitution of any other manufactures materials or components invalidates both test data, system performance and compliance with CDM 2015. The information is provided and based upon details received, which are assumed to include all the relevant facts and data. While it is believed to be correct, we accept no liability for its accuracy, adequacy or completeness. Recipients must satisfy themselves as to its suitability as we do not accept responsibility for any claims or consequential loss. Acceptance of the content and subsequent design responsibility rests entirely with the recipients. Any subsequent design changes that affect the detail which we are not informed of in a written format will void this detail. None of the content may be copied without the prior INFORMATION from the Benx Group Technical Services Department. This statement should be read in conjunction with the standard terms and conditions of Benx Group.

REV	DATE	NOTE	BY	STATUS:	INFORMATION	DRAWN:
A	29.04.24	First Issue	MAB	PROJECT:	Cladcolour Rainscreen system	MAB
				ISO No:	5068	CHECK:
				DRAWING No:	5068-TD-CC-AF-SFS-P-00	AR
				DESCRIPTION:	DETAIL KEY	NTS@A3
						DATE:
						APR 24
						REV:
						A



D = From 47mm to 365mm  
 D1 = 6mm  
 D2 = 12mm

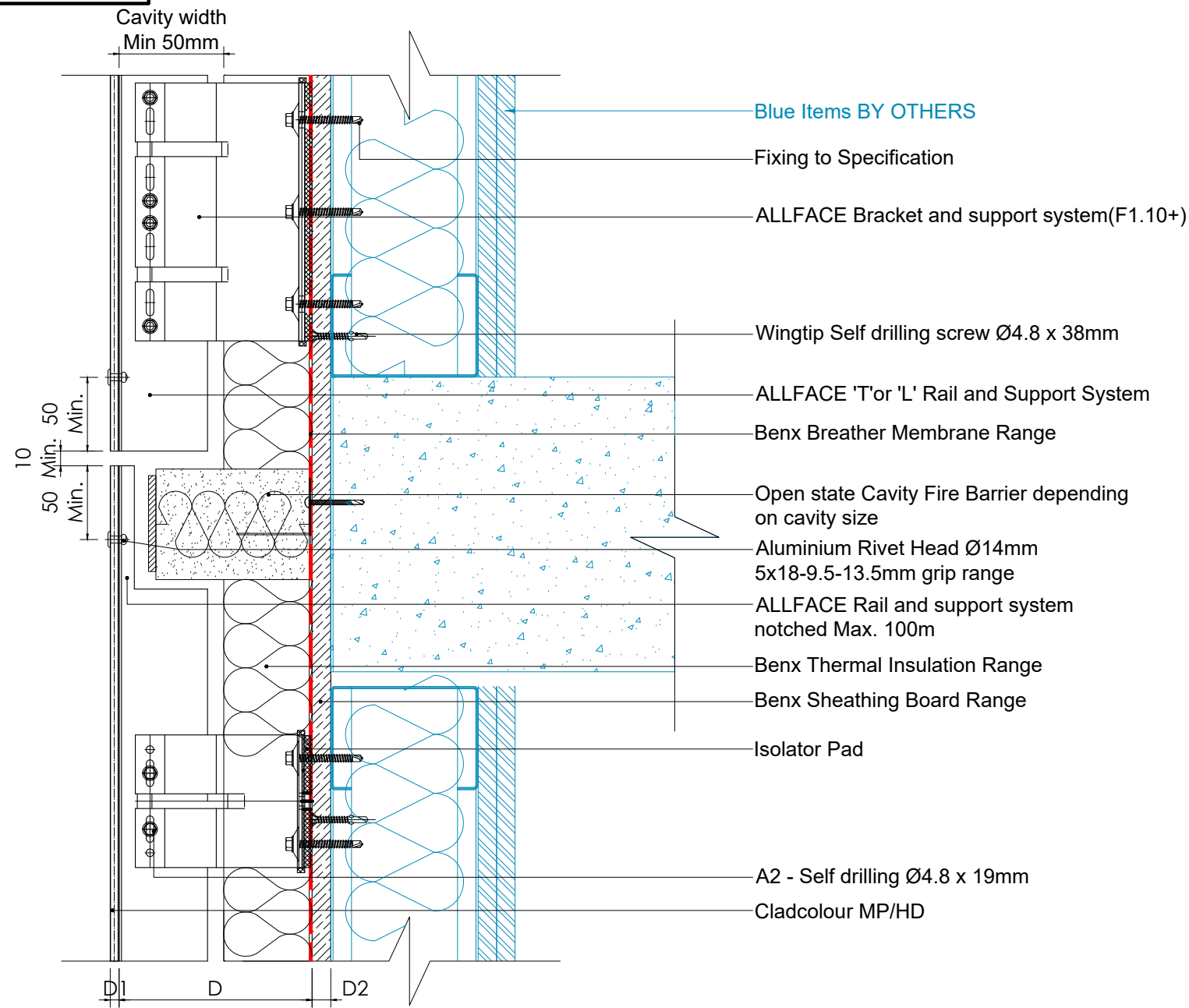


Benx Ltd, Lonsdale Chambers,  
 Lonsdale Street,  
 Stoke-on-Trent  
 Staffordshire  
 ST4 4BT  
 Telephone: 0845 130 0983  
 Email:  
[technicalservices@benx.co.uk](mailto:technicalservices@benx.co.uk)

All performance data & systems specifications are for systems constructed with materials & components as shown. The inclusion or substitution of any other manufactures materials or components invalidates both test data, system performance and compliance with CDM 2015. The information is provided and based upon details received, which are assumed to include all the relevant facts and data. While it is believed to be correct, we accept no liability for its accuracy, adequacy or completeness. Recipients must satisfy themselves as to its suitability as we do not accept responsibility for any claims or consequential loss. Acceptance of the content and subsequent design responsibility rests entirely with the recipients. Any subsequent design changes that affect the detail which we are not informed of in a written format will void this detail. None of the content may be copied without the prior INFORMATION from the Benx Group Technical Services Department. This statement should be read in conjunction with the standard terms and conditions of Benx Group.

REV	DATE	NOTE	BY	STATUS:	INFORMATION	DRAWN:
A	29.04.24	First Issue	MAB	PROJECT:	Cladcolour Rainscreen system	MAB
				ISO No:	5068	CHECK:
				DRAWING No:	5068-TD-CC-AF-SFS-P-01	AR
				DESCRIPTION:	VERTICAL JOINT & CAVITY BARRIER	NTS@A3
						DATE:
						APR 24
						REV:
						A

D = From 47mm to 365mm  
 D1 = 6mm  
 D2 = 12mm

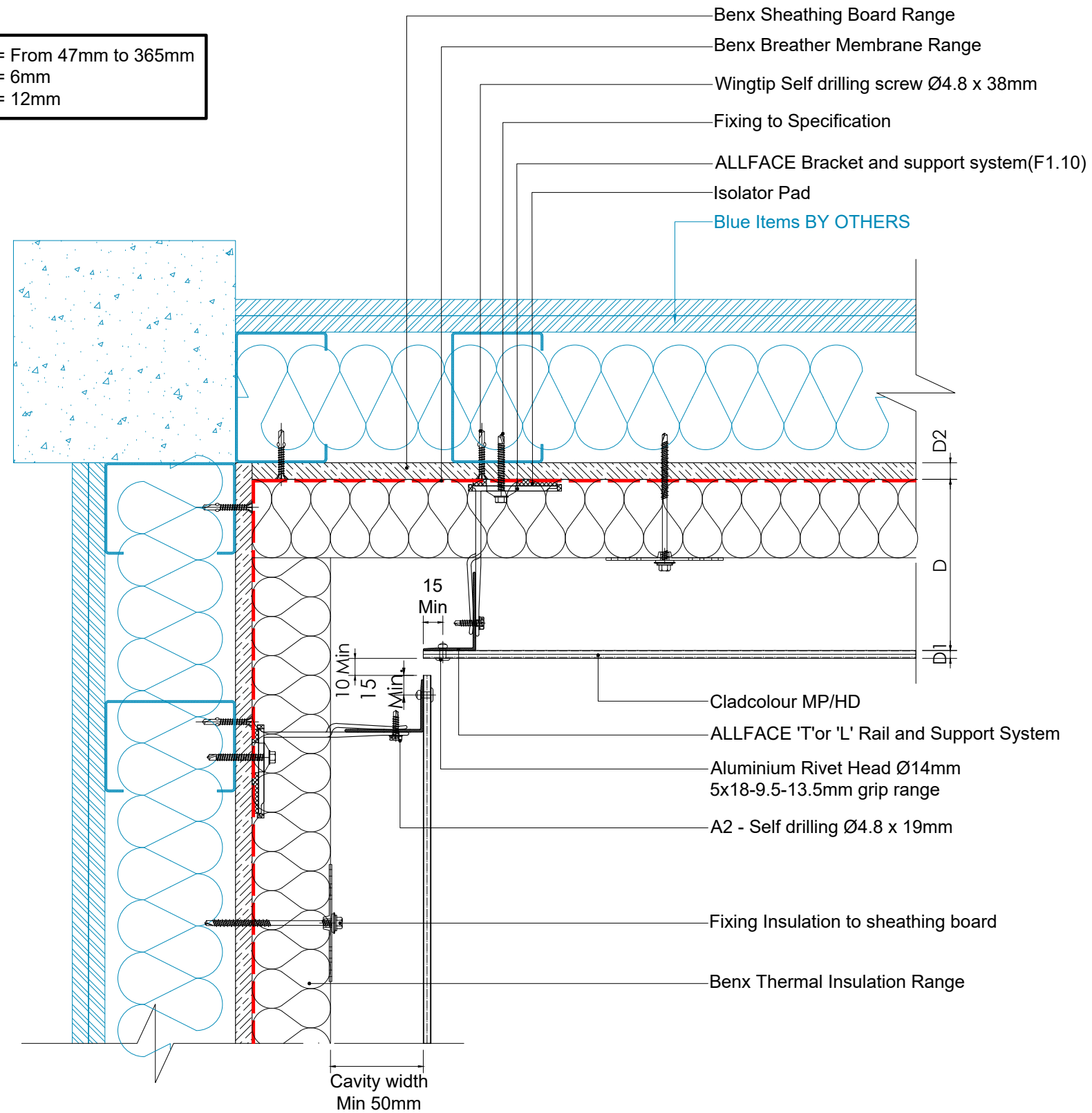


Benx Ltd, Lonsdale Chambers,  
 Lonsdale Street,  
 Stoke-on-Trent  
 Staffordshire  
 ST4 4BT  
 Telephone: 0845 130 0983  
 Email:  
[technicalservices@benx.co.uk](mailto:technicalservices@benx.co.uk)

All performance data & systems specifications are for systems constructed with materials & components as shown. The inclusion or substitution of any other manufactures materials or components invalidates both test data, system performance and compliance with CDM 2015. The information is provided and based upon details received, which are assumed to include all the relevant facts and data. While it is believed to be correct, we accept no liability for its accuracy, adequacy or completeness. Recipients must satisfy themselves as to its suitability as we do not accept responsibility for any claims or consequential loss. Acceptance of the content and subsequent design responsibility rests entirely with the recipients. Any subsequent design changes that affect the detail which we are not informed of in a written format will void this detail. None of the content may be copied without the prior INFORMATION from the Benx Group Technical Services Department. This statement should be read in conjunction with the standard terms and conditions of Benx Group.

REV	DATE	NOTE	BY	STATUS:	INFORMATION	DRAWN:
A	29.04.24	First Issue	MAB	PROJECT:	Cladcolour Rainscreen system	MAB
				ISO No:	5068	CHECK:
				DRAWING No:	5068-TD-CC-AF-SFS-P-02	AR
				DESCRIPTION:	MOVEMENT JOINT HORIZONTAL	NTS@A3
						DATE:
						APR 24
						REV:
						A

D = From 47mm to 365mm  
 D1 = 6mm  
 D2 = 12mm



Benx Ltd, Lonsdale Chambers,  
 Lonsdale Street,  
 Stoke-on-Trent  
 Staffordshire  
 ST4 4BT  
 Telephone: 0845 130 0983  
 Email:  
[technicalservices@benx.co.uk](mailto:technicalservices@benx.co.uk)

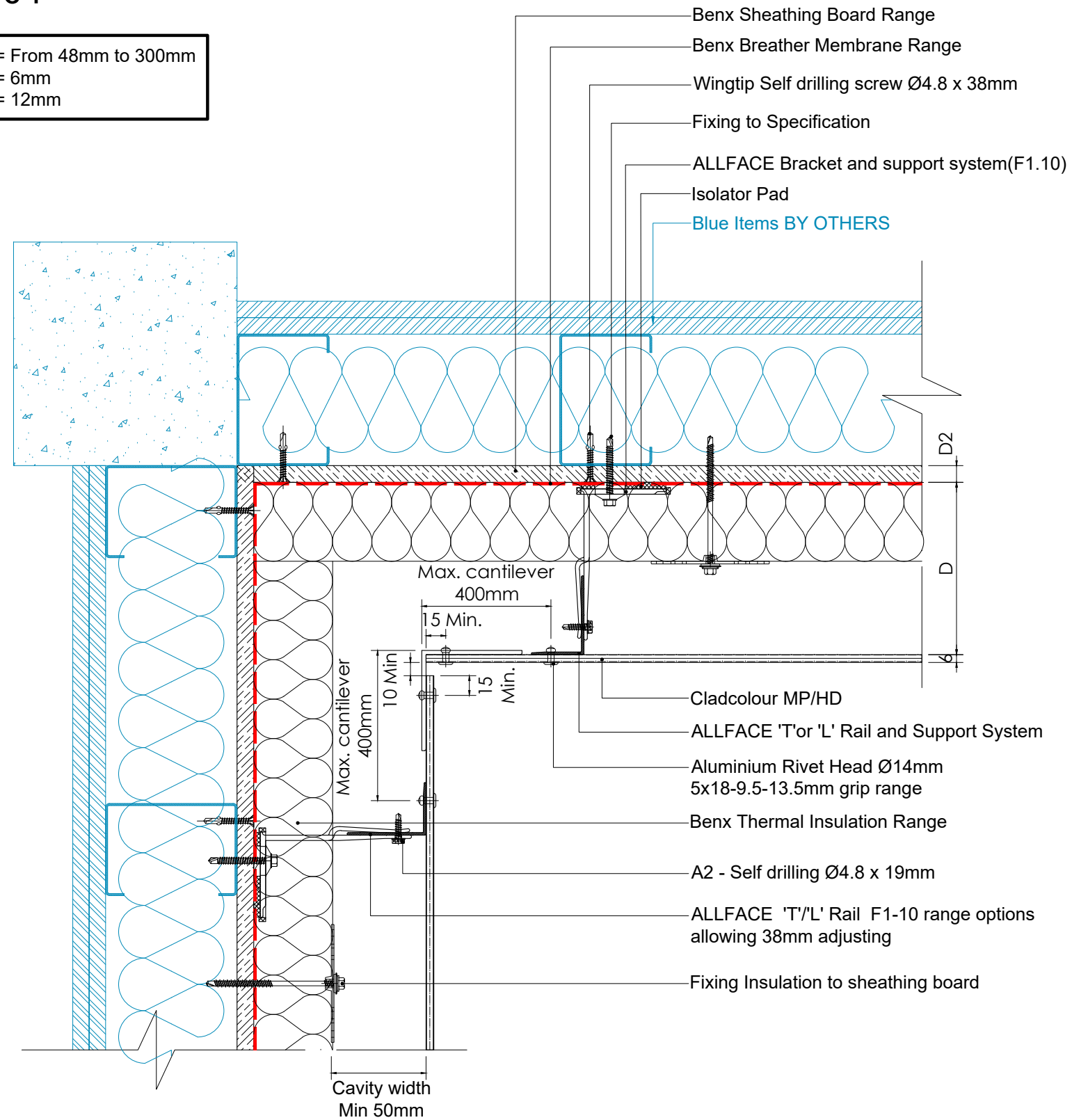
All performance data & systems specifications are for systems constructed with materials & components as shown. The inclusion or substitution of any other manufactures materials or components invalidates both test data, system performance and compliance with CDM 2015. The information is provided and based upon details received, which are assumed to include all the relevant facts and data. While it is believed to be correct, we accept no liability for its accuracy, adequacy or completeness. Recipients must satisfy themselves as to its suitability as we do not accept responsibility for any claims or consequential loss. Acceptance of the content and subsequent design responsibility rests entirely with the recipients. Any subsequent design changes that affect the detail which we are not informed of in a written format will void this detail. None of the content may be copied without the prior INFORMATION from the Benx Group Technical Services Department. This statement should be read in conjunction with the standard terms and conditions of Benx Group.

REV	DATE	NOTE	BY	STATUS:	INFORMATION	DRAWN:
A	29.04.24	First Issue	MAB	PROJECT:	Cladcolour Rainscreen system	MAB
				DESCRIPTION:	INT. CORNER CANTILEVER	
				ISO No:	5068	
				DRAWING No:	5068-TD-CC-AF-SFS-P-03	
				DATE:	APR 24	
				REV:	A	



# RS04

D = From 48mm to 300mm  
 D1 = 6mm  
 D2 = 12mm

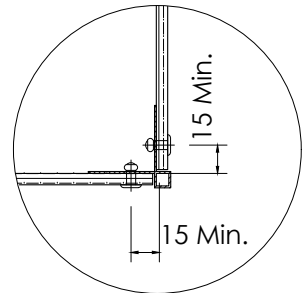


REV	DATE	NOTE	BY	STATUS:	INFORMATION	DRAWN:
A	29.04.24	First Issue	MAB	PROJECT:	Cladcolour Rainscreen system	MAB
				ISO No:	5068	CHECK:
				DRAWING No:	5068-TD-CC-AF-SFS-P-04	AR
				DESCRIPTION:	INT. CORNER FIXED	NTS@A3
						DATE:
						APR 24
						REV:
						A

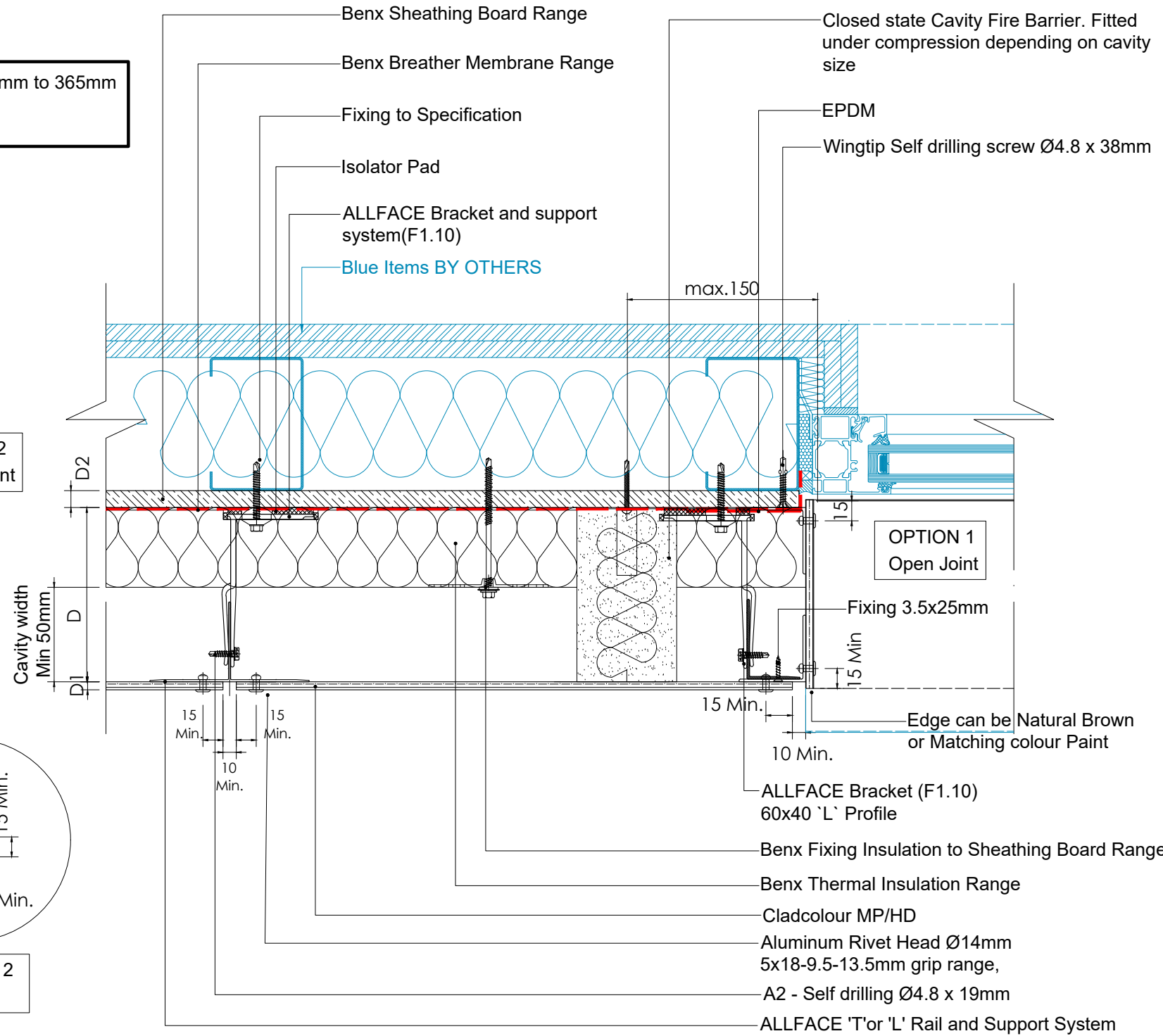


D = From 47mm to 365mm  
 D1 = 6mm  
 D2 = 12mm

OPTION 2  
 Mitred Joint



OPTION 2  
 Profile D

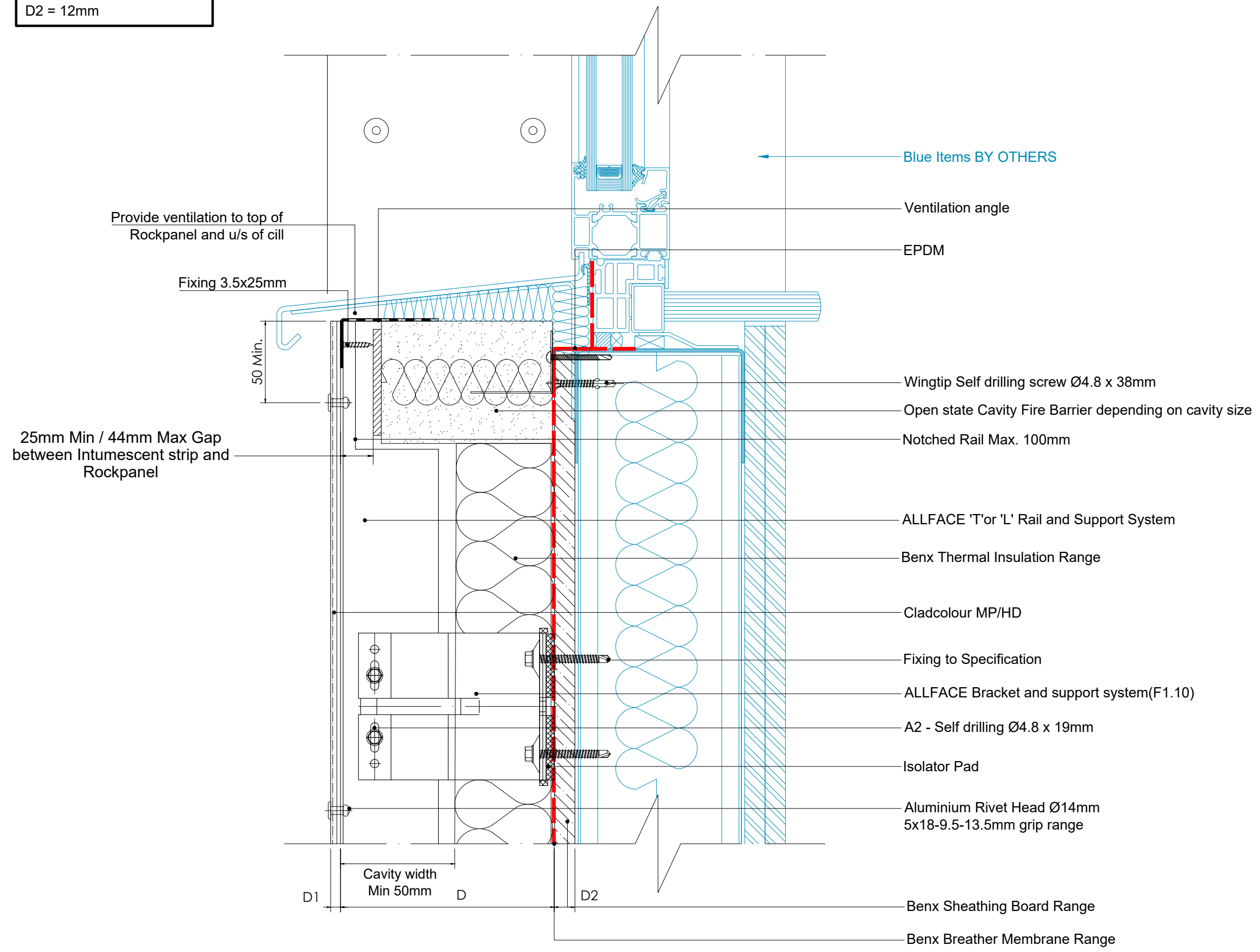


Benx Ltd, Lonsdale Chambers,  
 Lonsdale Street,  
 Stoke-on-Trent  
 Staffordshire  
 ST4 4BT  
 Telephone: 0845 130 0983  
 Email:  
[technicalservices@benx.co.uk](mailto:technicalservices@benx.co.uk)

All performance data & systems specifications are for systems constructed with materials & components as shown. The inclusion or substitution of any other manufactures materials or components invalidates both test data, system performance and compliance with CDM 2015. The information is provided and based upon details received, which are assumed to include all the relevant facts and data. While it is believed to be correct, we accept no liability for its accuracy, adequacy or completeness. Recipients must satisfy themselves as to its suitability as we do not accept responsibility for any claims or consequential loss. Acceptance of the content and subsequent design responsibility rests entirely with the recipients. Any subsequent design changes that affect the detail which we are not informed of in a written format will void this detail. None of the content may be copied without the prior INFORMATION from the Benx Group Technical Services Department. This statement should be read in conjunction with the standard terms and conditions of Benx Group.

REV	DATE	NOTE	BY	STATUS:	INFORMATION	DRAWN:
A	29.04.24	First Issue	MAB	PROJECT:	Cladcolour Rainscreen system	MAB
				ISO No:	5068	CHECK:
				DRAWING No:	5068-TD-CC-AF-SFS-P-07	AR
				DESCRIPTION:	JAMB DETAIL	NTS@A3
						DATE:
						APR 24
						REV:
						A

D = From 47mm to 365mm  
 D1 = 6mm  
 D2 = 12mm



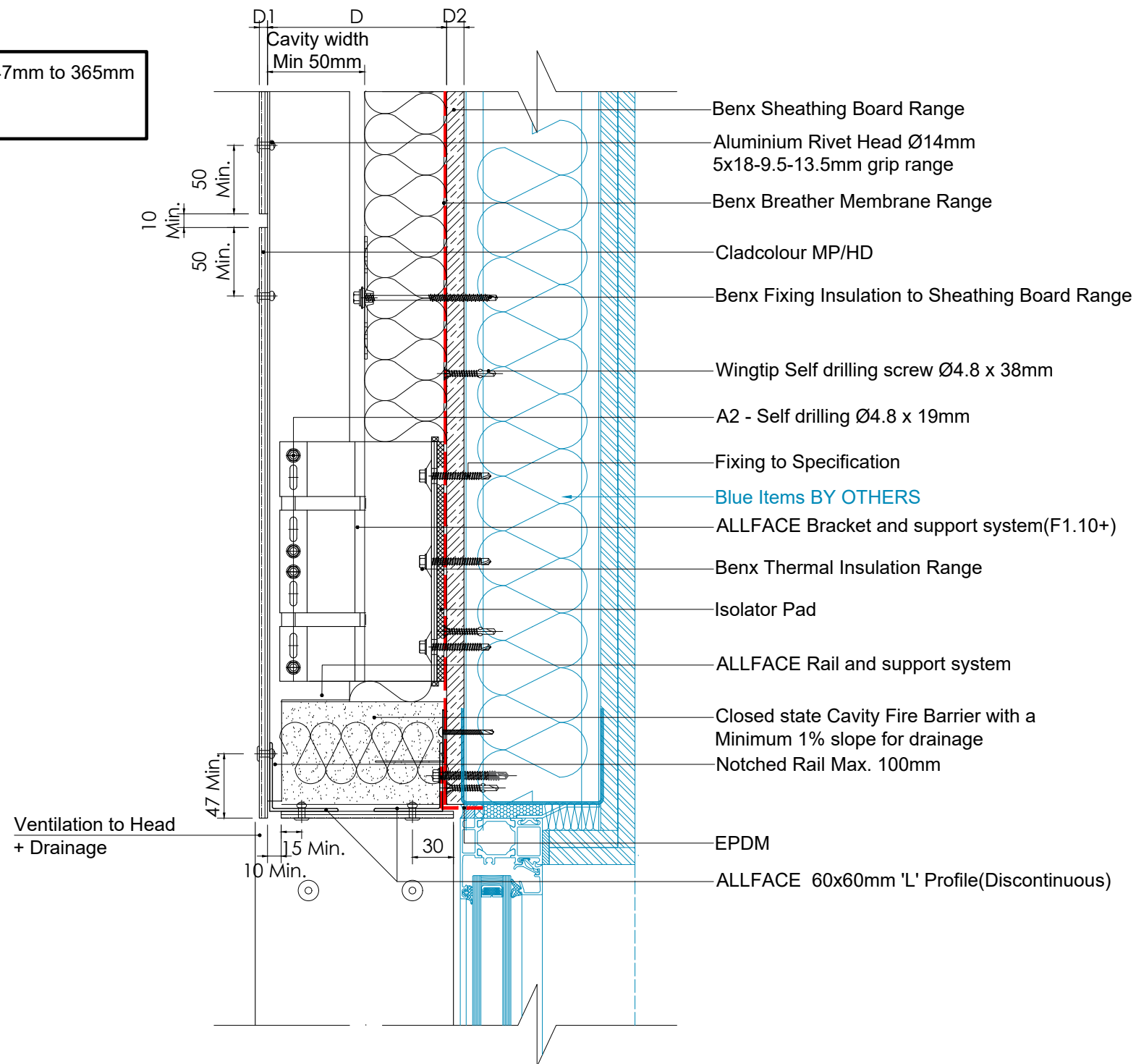
Benx Ltd, Lonsdale Chambers,  
 Lonsdale Street,  
 Stoke-on-Trent  
 Staffordshire  
 ST4 4BT  
 Telephone: 0845 130 0983  
 Email:  
[technicalservices@benx.co.uk](mailto:technicalservices@benx.co.uk)

All performance data & systems specifications are for systems constructed with materials & components as shown. The inclusion or substitution of any other manufactures materials or components invalidates both test data, system performance and compliance with CDM 2015. The information is provided and based upon details received, which are assumed to include all the relevant facts and data. While it is believed to be correct, we accept no liability for its accuracy, adequacy or completeness. Recipients must satisfy themselves as to its suitability as we do not accept responsibility for any claims or consequential loss. Acceptance of the content and subsequent design responsibility rests entirely with the recipients. Any subsequent design changes that affect the detail which we are not informed of in a written format will void this detail. None of the content may be copied without the prior INFORMATION from the Benx Group Technical Services Department. This statement should be read in conjunction with the standard terms and conditions of Benx Group.

REV	DATE	NOTE	BY	STATUS:	INFORMATION	DRAWN:	MAB
A	29.04.24	First Issue	MAB	PROJECT:	Cladcolour Rainscreen system	CHECK:	AR
				DRAWING No:	5068-TD-CC-AF-SFS-P-08	DATE:	APR 24
				DESCRIPTION:	WINDOW CILL DETAIL	REV:	A

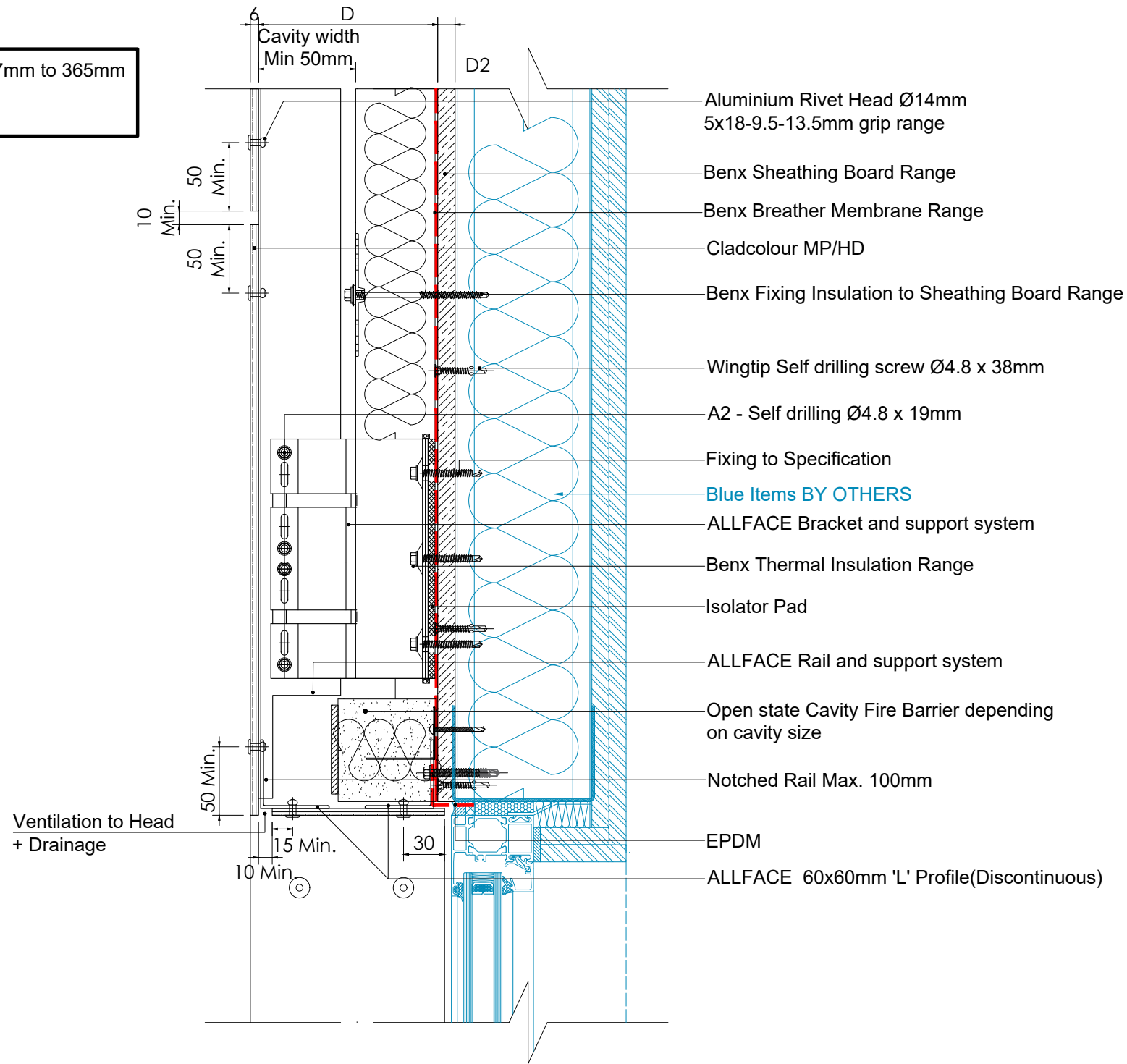
ISO No: 5068

D = From 47mm to 365mm  
 D1 = 6mm  
 D2 = 12mm



REV	DATE	NOTE	BY	STATUS:	INFORMATION	DRAWN:	MAB
A	29.04.24	First Issue	MAB	PROJECT:	Cladcolour Rainscreen system	CHECK:	AR
				DRAWING No:	5068-TD-CC-AF-SFS-P-09	DATE:	APR 24
				DESCRIPTION:	WINDOW HEAD DETAIL(Option 1)	REV:	A
				STATUS:	INFORMATION		
				PROJECT:	Cladcolour Rainscreen system		
				ISO No:	5068		

D = From 47mm to 365mm  
 D1 = 9mm  
 D2 = 12mm



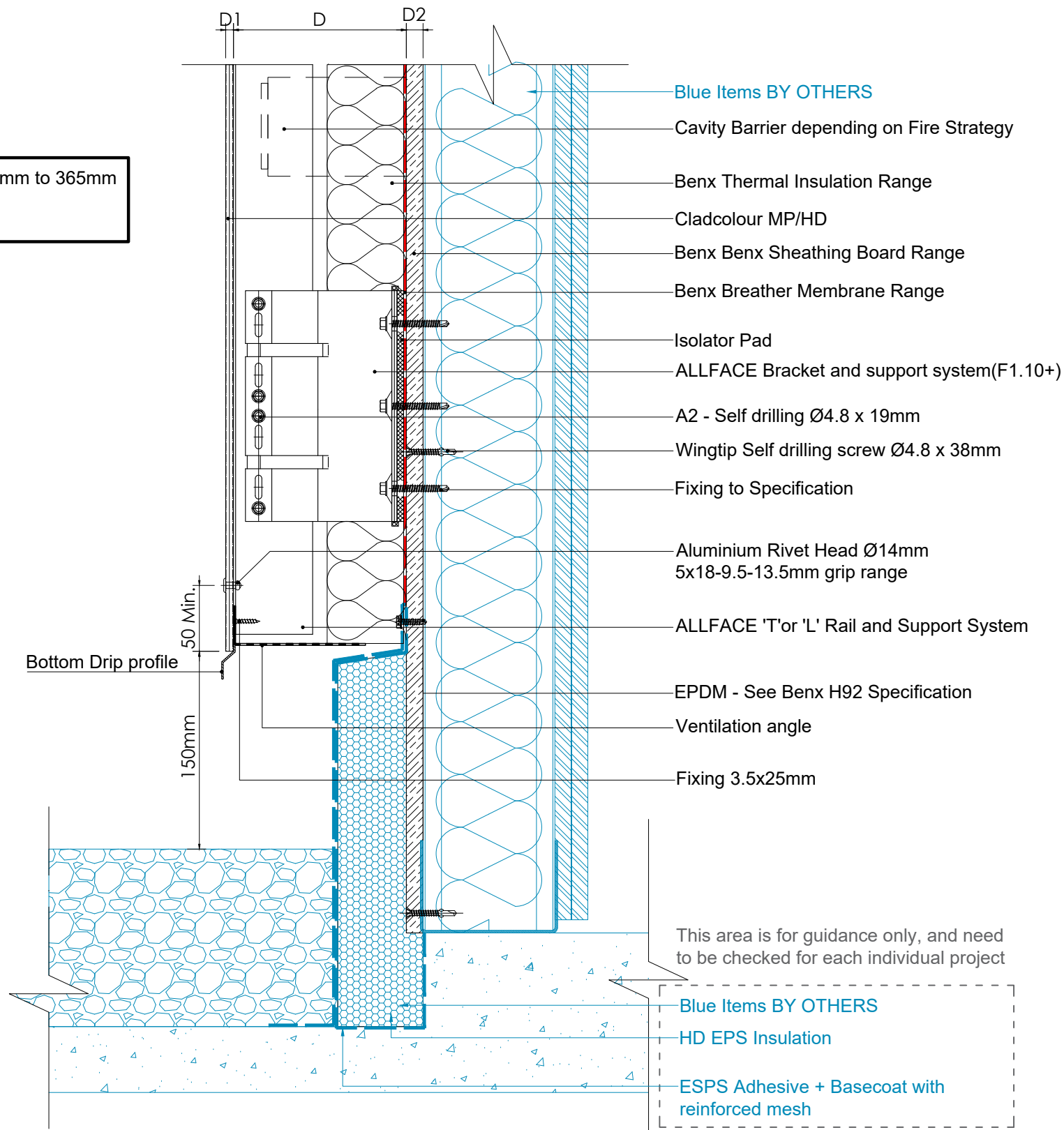
Benx Ltd, Lonsdale Chambers,  
 Lonsdale Street,  
 Stoke-on-Trent  
 Staffordshire  
 ST4 4BT  
 Telephone: 0845 130 0983  
 Email:  
[technicalservices@benx.co.uk](mailto:technicalservices@benx.co.uk)

All performance data & systems specifications are for systems constructed with materials & components as shown. The inclusion or substitution of any other manufactures materials or components invalidates both test data, system performance and compliance with CDM 2015. The information is provided and based upon details received, which are assumed to include all the relevant facts and data. While it is believed to be correct, we accept no liability for its accuracy, adequacy or completeness. Recipients must satisfy themselves as to its suitability as we do not accept responsibility for any claims or consequential loss. Acceptance of the content and subsequent design responsibility rests entirely with the recipients. Any subsequent design changes that affect the detail which we are not informed of in a written format will void this detail. None of the content may be copied without the prior INFORMATION from the Benx Group Technical Services Department. This statement should be read in conjunction with the standard terms and conditions of Benx Group.

REV	DATE	NOTE	BY	STATUS:	INFORMATION	DRAWN:
A	29.04.24	First Issue	MAB	PROJECT:	Cladcolour Rainscreen system	MAB
				ISO No:	5068	CHECK:
				DRAWING No:	5068-TD-CC-AF-SFS-P-09a	AR
				DESCRIPTION:	WINDOW HEAD DETAIL (Option 2)	NTS@A3
						DATE:
						APR 24
						REV:
						A



D = From 47mm to 365mm  
 D1 = 6mm  
 D2 = 12mm



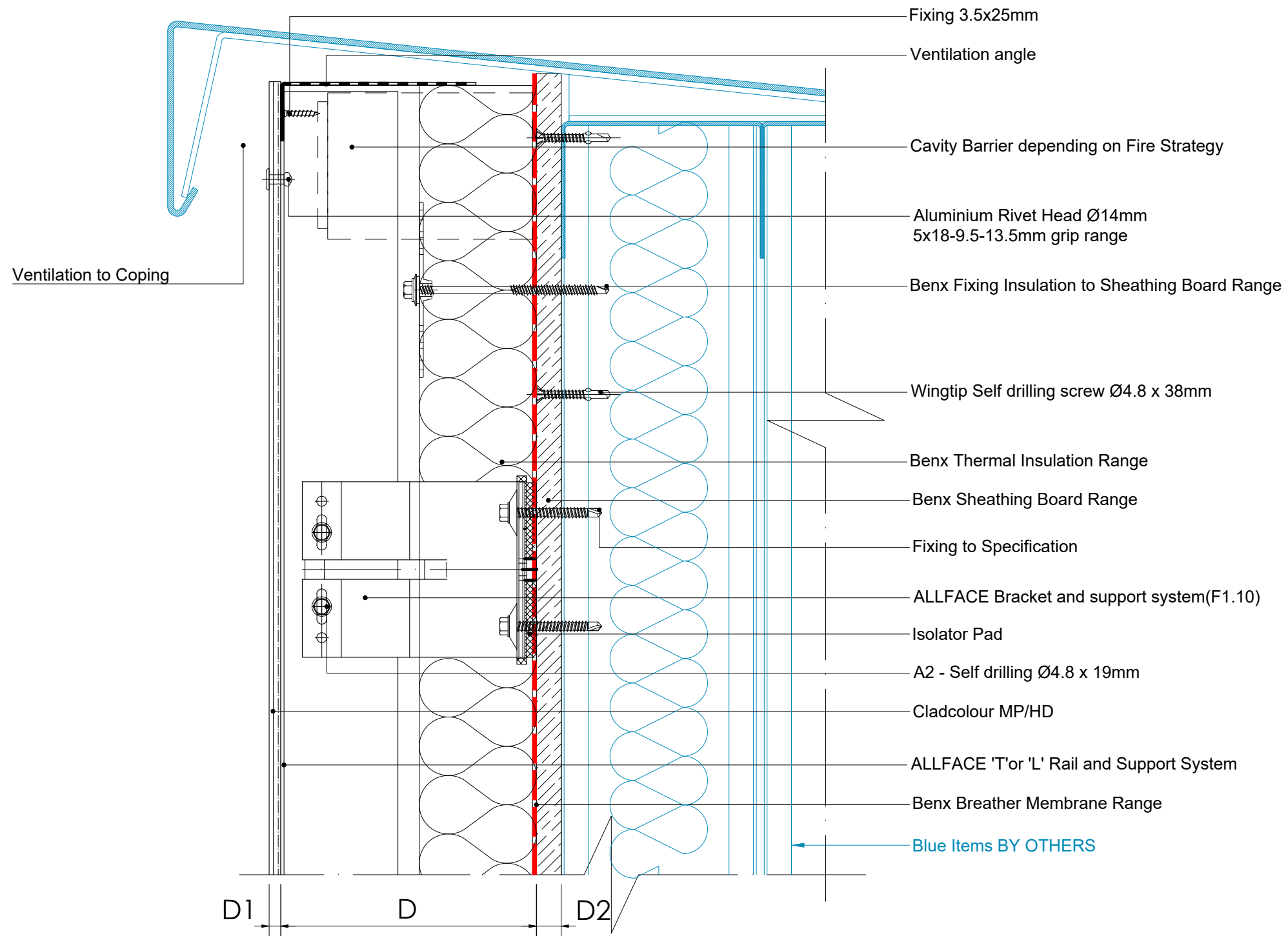
Benx Ltd, Lonsdale Chambers,  
 Lonsdale Street,  
 Stoke-on-Trent  
 Staffordshire  
 ST4 4BT  
 Telephone: 0845 130 0983  
 Email:  
[technicalservices@benx.co.uk](mailto:technicalservices@benx.co.uk)

All performance data & systems specifications are for systems constructed with materials & components as shown. The inclusion or substitution of any other manufactures materials or components invalidates both test data, system performance and compliance with CDM 2015. The information is provided and based upon details received, which are assumed to include all the relevant facts and data. While it is believed to be correct, we accept no liability for its accuracy, adequacy or completeness. Recipients must satisfy themselves as to its suitability as we do not accept responsibility for any claims or consequential loss. Acceptance of the content and subsequent design responsibility rests entirely with the recipients. Any subsequent design changes that affect the detail which we are not informed of in a written format will void this detail. None of the content may be copied without the prior INFORMATION from the Benx Group Technical Services Department. This statement should be read in conjunction with the standard terms and conditions of Benx Group.

REV	DATE	NOTE	BY	STATUS:	INFORMATION	DRAWN:
A	29.04.24	First Issue	MAB	PROJECT:	Cladcolour Rainscreen system	MAB
				ISO No:	5068	CHECK:
				DRAWING No:	5068-TD-CC-AF-SFS-P-10	AR
				DESCRIPTION:	BASE DETAIL	NTS@A3
						DATE:
						APR 24
						REV:
						A



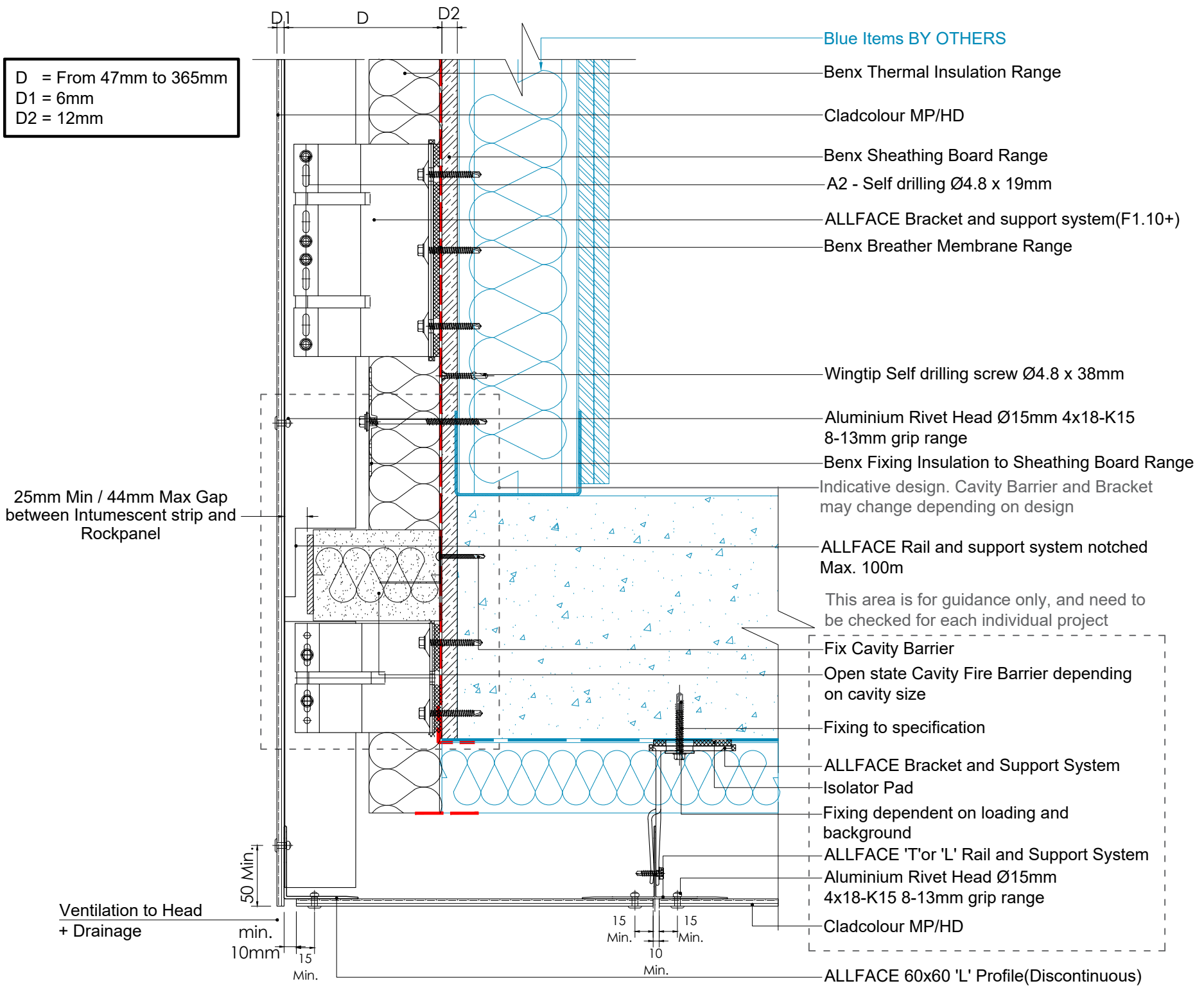
D = From 47mm to 365mm  
 D1 = 6mm  
 D2 = 12mm



Benx Ltd, Lonsdale Chambers,  
 Lonsdale Street,  
 Stoke-on-Trent  
 Staffordshire  
 ST4 4BT  
 Telephone: 0845 130 0983  
 Email:  
[technicalservices@benx.co.uk](mailto:technicalservices@benx.co.uk)

All performance data & systems specifications are for systems constructed with materials & components as shown. The inclusion or substitution of any other manufactures materials or components invalidates both test data, system performance and compliance with CDM 2015. The information is provided and based upon details received, which are assumed to include all the relevant facts and data. While it is believed to be correct, we accept no liability for its accuracy, adequacy or completeness. Recipients must satisfy themselves as to its suitability as we do not accept responsibility for any claims or consequential loss. Acceptance of the content and subsequent design responsibility rests entirely with the recipients. Any subsequent design changes that affect the detail which we are not informed of in a written format will void this detail. None of the content may be copied without the prior INFORMATION from the Benx Group Technical Services Department. This statement should be read in conjunction with the standard terms and conditions of Benx Group.

REV	DATE	NOTE	BY	STATUS:	INFORMATION	DRAWN:
A	29.04.24	First Issue	MAB	PROJECT:	Cladcolour Rainscreen system	MAB
				ISO No:	5068	CHECK:
				DRAWING No:	5068-TD-CC-AF-SFS-P-11	AR
				DESCRIPTION:	COPING	NTS@A3
						DATE:
						APR 24
						REV:
						A



D = From 47mm to 365mm  
 D1 = 6mm  
 D2 = 12mm

25mm Min / 44mm Max Gap  
 between Intumescent strip and  
 Rockpanel

Ventilation to Head  
 + Drainage

- Blue Items BY OTHERS
- Benx Thermal Insulation Range
- Cladcolour MP/HD
- Benx Sheathing Board Range
- A2 - Self drilling Ø4.8 x 19mm
- ALLFACE Bracket and support system(F1.10+)
- Benx Breather Membrane Range
- Wingtip Self drilling screw Ø4.8 x 38mm
- Aluminium Rivet Head Ø15mm 4x18-K15 8-13mm grip range
- Benx Fixing Insulation to Sheathing Board Range
- Indicative design. Cavity Barrier and Bracket may change depending on design
- ALLFACE Rail and support system notched Max. 100m
- This area is for guidance only, and need to be checked for each individual project
- Fix Cavity Barrier
- Open state Cavity Fire Barrier depending on cavity size
- Fixing to specification
- ALLFACE Bracket and Support System
- Isolator Pad
- Fixing dependent on loading and background
- ALLFACE 'T' or 'L' Rail and Support System
- Aluminium Rivet Head Ø15mm 4x18-K15 8-13mm grip range
- Cladcolour MP/HD
- ALLFACE 60x60 'L' Profile(Discontinuous)



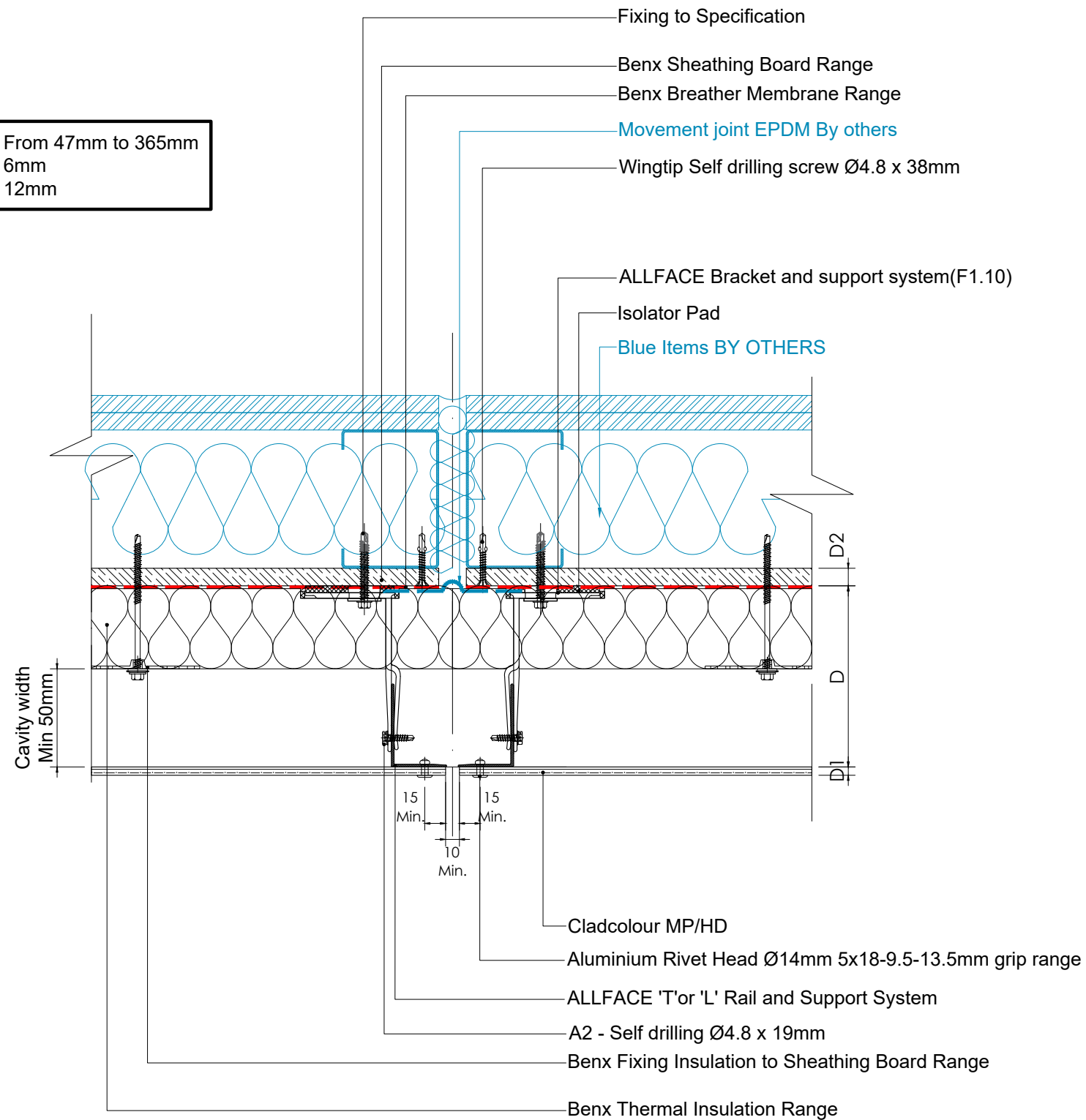
Benx Ltd, Lonsdale Chambers,  
 Lonsdale Street,  
 Stoke-on-Trent  
 Staffordshire  
 ST4 4BT  
 Telephone: 0845 130 0983  
 Email:  
[technicalservices@benx.co.uk](mailto:technicalservices@benx.co.uk)

All performance data & systems specifications are for systems constructed with materials & components as shown. The inclusion or substitution of any other manufactures materials or components invalidates both test data, system performance and compliance with CDM 2015. The information is provided and based upon details received, which are assumed to include all the relevant facts and data. While it is believed to be correct, we accept no liability for its accuracy, adequacy or completeness. Recipients must satisfy themselves as to its suitability as we do not accept responsibility for any claims or consequential loss. Acceptance of the content and subsequent design responsibility rests entirely with the recipients. Any subsequent design changes that affect the detail which we are not informed of in a written format will void this detail. None of the content may be copied without the prior INFORMATION from the Benx Group Technical Services Department. This statement should be read in conjunction with the standard terms and conditions of Benx Group.

REV	DATE	NOTE	BY	STATUS:	INFORMATION	DRAWN:	MAB
A	29.04.24	First Issue	MAB	PROJECT:	Cladcolour Rainscreen system	CHECK:	AR
				DRAWING No:	5068-TD-CC-AF-SFS-P-12	DATE:	APR 24
				DESCRIPTION:	SOFFIT DETAIL	REV:	A

ISO No: 5068

D = From 47mm to 365mm  
 D1 = 6mm  
 D2 = 12mm



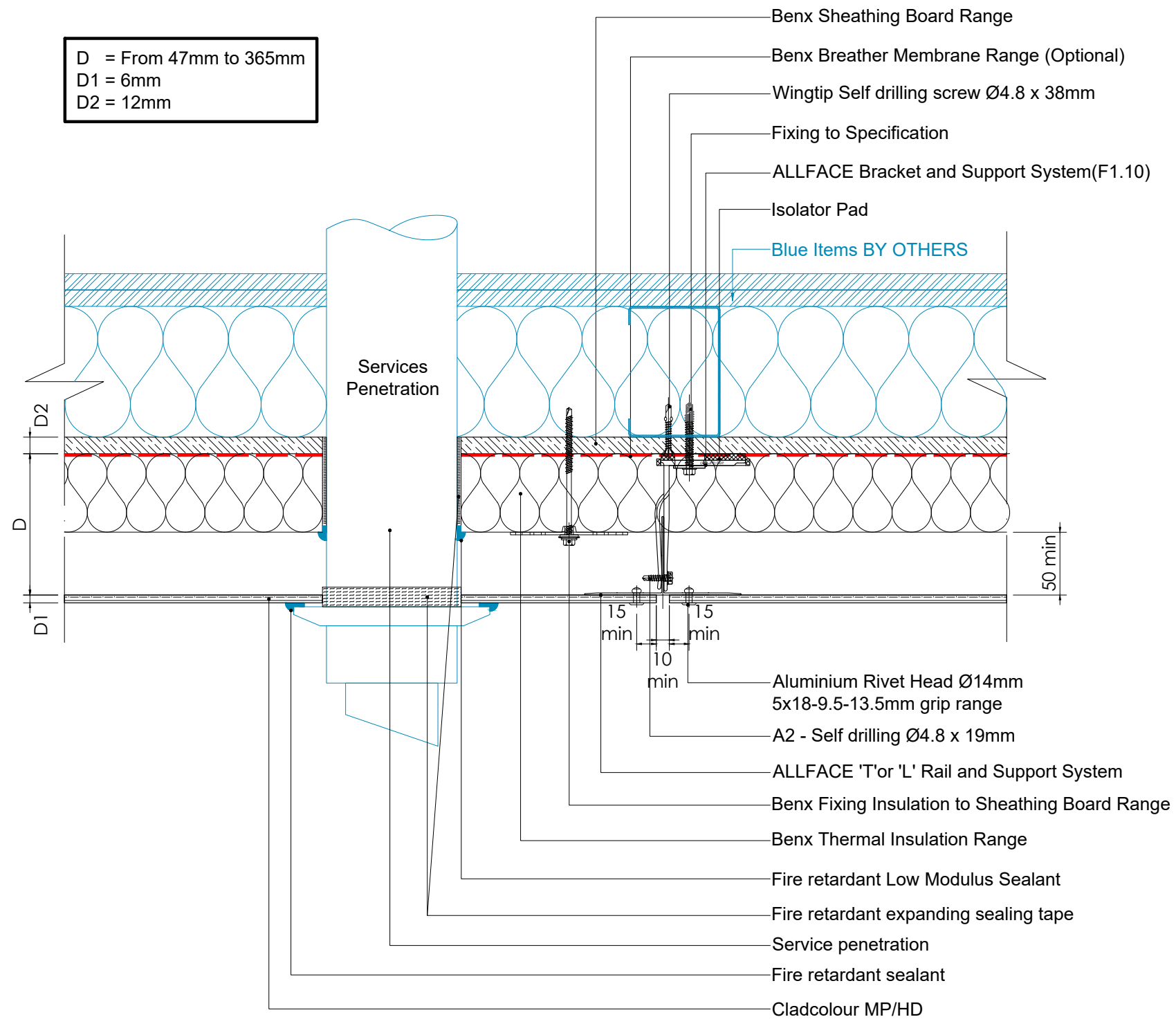
Benx Ltd, Lonsdale Chambers,  
 Lonsdale Street,  
 Stoke-on-Trent  
 Staffordshire  
 ST4 4BT  
 Telephone: 0845 130 0983  
 Email:  
[technicalservices@benx.co.uk](mailto:technicalservices@benx.co.uk)

All performance data & systems specifications are for systems constructed with materials & components as shown. The inclusion or substitution of any other manufactures materials or components invalidates both test data, system performance and compliance with CDM 2015. The information is provided and based upon details received, which are assumed to include all the relevant facts and data. While it is believed to be correct, we accept no liability for its accuracy, adequacy or completeness. Recipients must satisfy themselves as to its suitability as we do not accept responsibility for any claims or consequential loss. Acceptance of the content and subsequent design responsibility rests entirely with the recipients. Any subsequent design changes that affect the detail which we are not informed of in a written format will void this detail. None of the content may be copied without the prior INFORMATION from the Benx Group Technical Services Department. This statement should be read in conjunction with the standard terms and conditions of Benx Group.

REV	DATE	NOTE	BY	STATUS:	INFORMATION	DRAWN:
A	29.04.24	First Issue	MAB	PROJECT:	Cladcolour Rainscreen system	MAB
				ISO No:	5068	CHECK:
				DRAWING No:	5068-TD-CC-AF-SFS-P-13	AR
				DESCRIPTION:	MOVEMENT JOINT VERTICAL	NTS@A3
						DATE:
						APR 24
						REV:
						A



D = From 47mm to 365mm  
 D1 = 6mm  
 D2 = 12mm

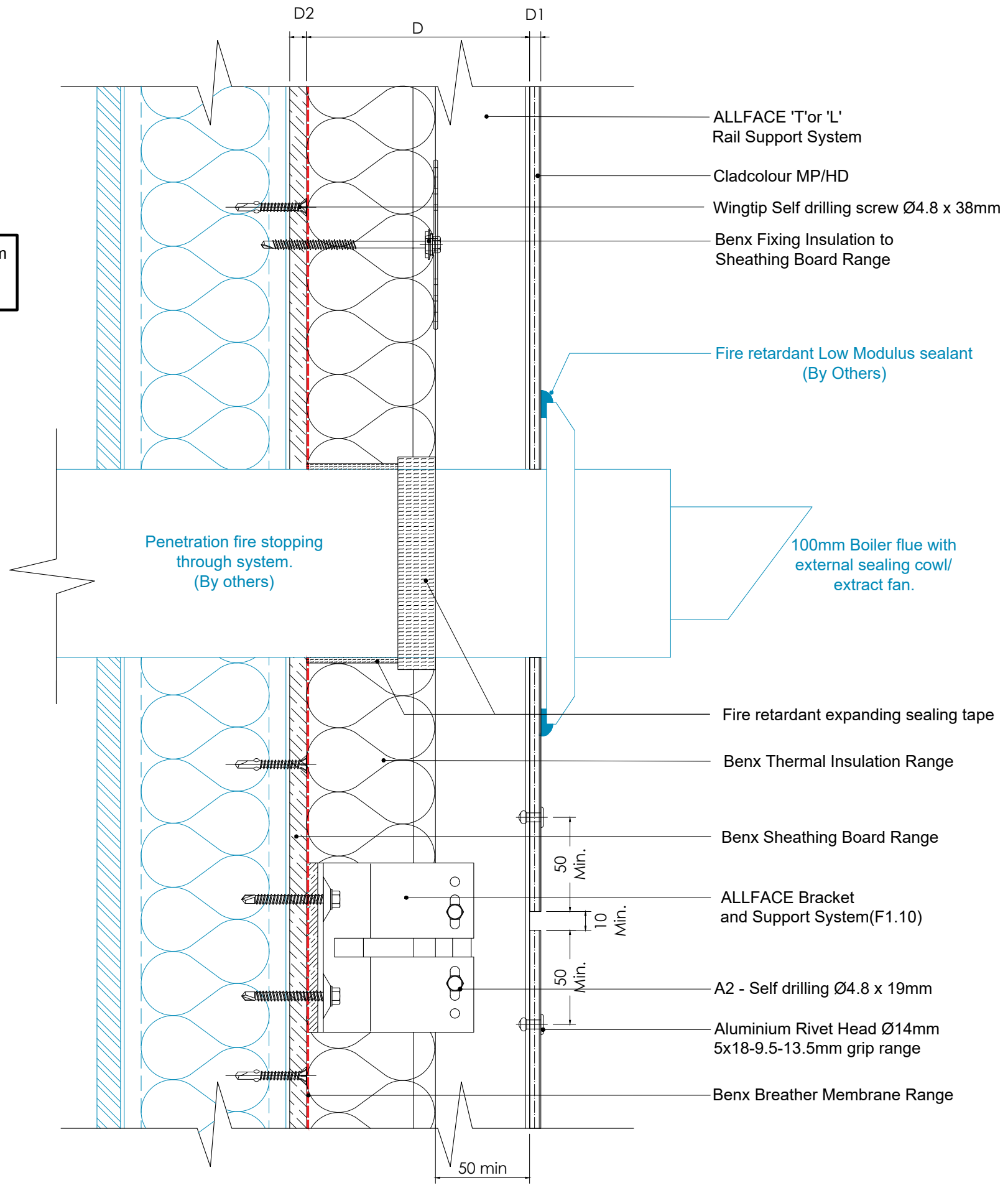


Benx Ltd, Lonsdale Chambers,  
 Lonsdale Street,  
 Stoke-on-Trent  
 Staffordshire  
 ST4 4BT  
 Telephone: 0845 130 0983  
 Email:  
[technicalservices@benx.co.uk](mailto:technicalservices@benx.co.uk)

All performance data & systems specifications are for systems constructed with materials & components as shown. The inclusion or substitution of any other manufactures materials or components invalidates both test data, system performance and compliance with CDM 2015. The information is provided and based upon details received, which are assumed to include all the relevant facts and data. While it is believed to be correct, we accept no liability for its accuracy, adequacy or completeness. Recipients must satisfy themselves as to its suitability as we do not accept responsibility for any claims or consequential loss. Acceptance of the content and subsequent design responsibility rests entirely with the recipients. Any subsequent design changes that affect the detail which we are not informed of in a written format will void this detail. None of the content may be copied without the prior INFORMATION from the Benx Group Technical Services Department. This statement should be read in conjunction with the standard terms and conditions of Benx Group.

REV	DATE	NOTE	BY	STATUS:	INFORMATION	DRAWN:
A	29.04.24	First Issue	MAB	PROJECT:	Cladcolour Rainscreen system	MAB
				ISO No:	5068	CHECK:
				DRAWING No:	5068-TD-CC-AF-SFS-P-14	AR
				DESCRIPTION:	SERVICES PENETRATION DETAIL	NTS@A3
						DATE:
						APR 24
						REV:
						A

D = From 47mm to 365mm  
 D1 = 6mm  
 D2 = 12mm

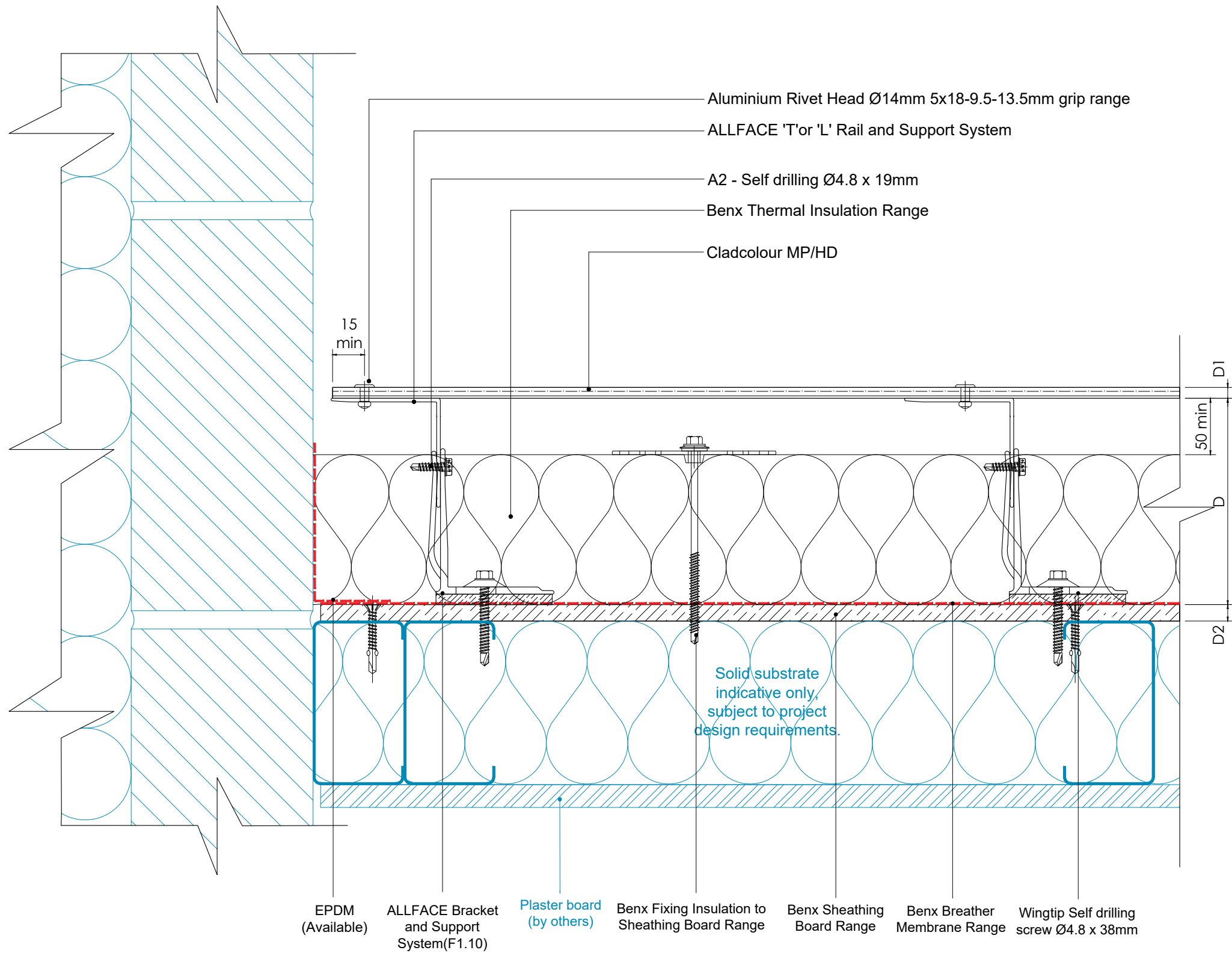


Benx Ltd, Lonsdale Chambers,  
 Lonsdale Street,  
 Stoke-on-Trent  
 Staffordshire  
 ST4 4BT  
 Telephone: 0845 130 0983  
 Email:  
[technicalservices@benx.co.uk](mailto:technicalservices@benx.co.uk)

All performance data & systems specifications are for systems constructed with materials & components as shown. The inclusion or substitution of any other manufactures materials or components invalidates both test data, system performance and compliance with CDM 2015. The information is provided and based upon details received, which are assumed to include all the relevant facts and data. While it is believed to be correct, we accept no liability for its accuracy, adequacy or completeness. Recipients must satisfy themselves as to its suitability as we do not accept responsibility for any claims or consequential loss. Acceptance of the content and subsequent design responsibility rests entirely with the recipients. Any subsequent design changes that affect the detail which we are not informed of in a written format will void this detail. None of the content may be copied without the prior INFORMATION from the Benx Group Technical Services Department. This statement should be read in conjunction with the standard terms and conditions of Benx Group.

REV	DATE	NOTE	BY	STATUS:	INFORMATION	DRAWN:
A	29.04.24	First Issue	MAB	PROJECT:	Cladcolour Rainscreen system	MAB
				ISO No:	5068	CHECK:
				DRAWING No:	5068-TD-CC-AF-SFS-P-15	AR
				DESCRIPTION:	FLUE OR EXTRACT FAN DETAIL	NTS@A3
						DATE:
						APR 24
						REV:
						A

D = From 47mm to 365mm  
 D1 = 6mm  
 D2 = 12mm



Benx Ltd, Lonsdale Chambers,  
 Lonsdale Street,  
 Stoke-on-Trent  
 Staffordshire  
 ST4 4BT  
 Telephone: 0845 130 0983  
 Email:  
[technicalservices@benx.co.uk](mailto:technicalservices@benx.co.uk)

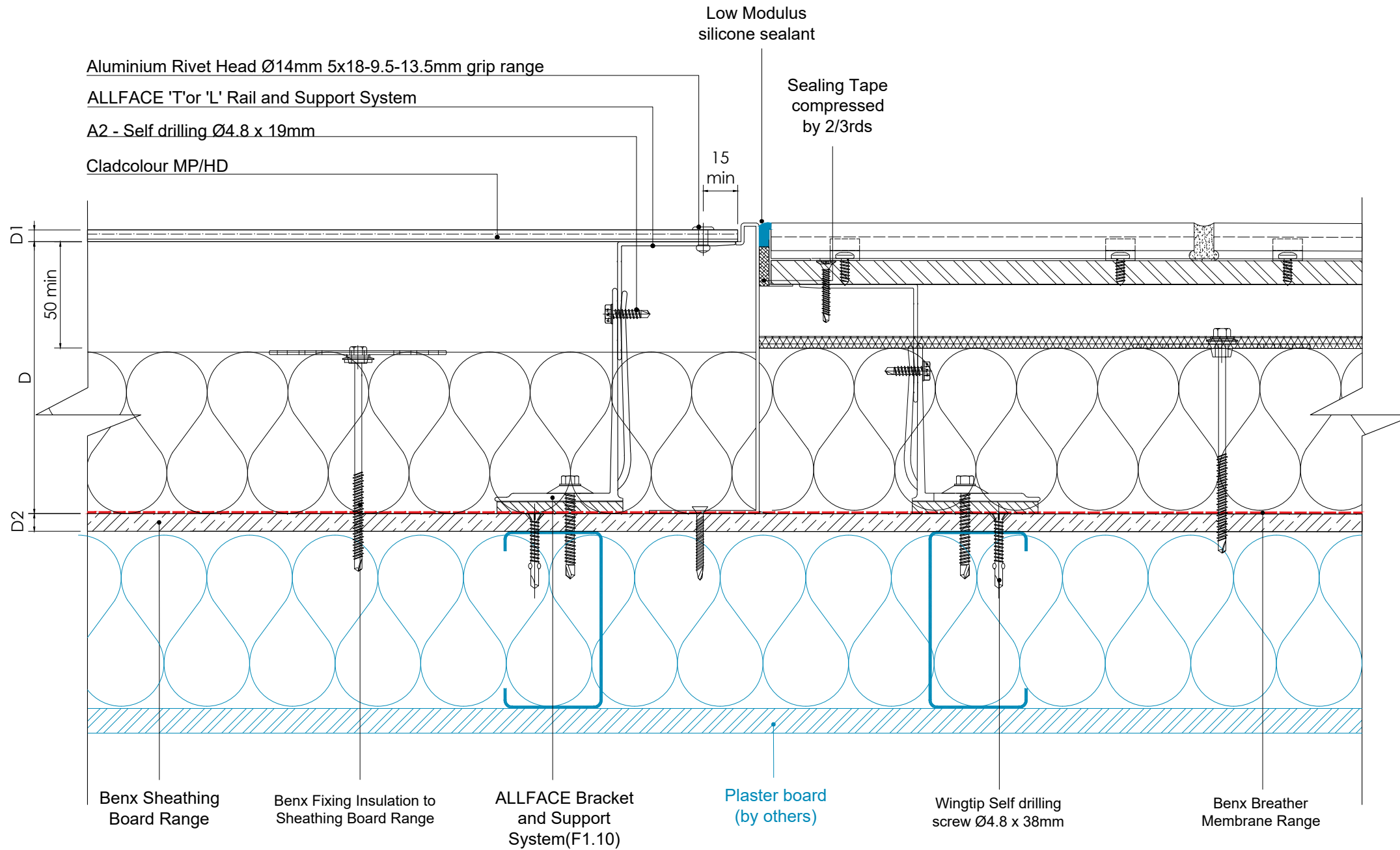
All performance data & systems specifications are for systems constructed with materials & components as shown. The inclusion or substitution of any other manufactures materials or components invalidates both test data, system performance and compliance with CDM 2015. The information is provided and based upon details received, which are assumed to include all the relevant facts and data. While it is believed to be correct, we accept no liability for its accuracy, adequacy or completeness. Recipients must satisfy themselves as to its suitability as we do not accept responsibility for any claims or consequential loss. Acceptance of the content and subsequent design responsibility rests entirely with the recipients. Any subsequent design changes that affect the detail which we are not informed of in a written format will void this detail. None of the content may be copied without the prior INFORMATION from the Benx Group Technical Services Department. This statement should be read in conjunction with the standard terms and conditions of Benx Group.

REV	DATE	NOTE
A	29.04.24	First Issue

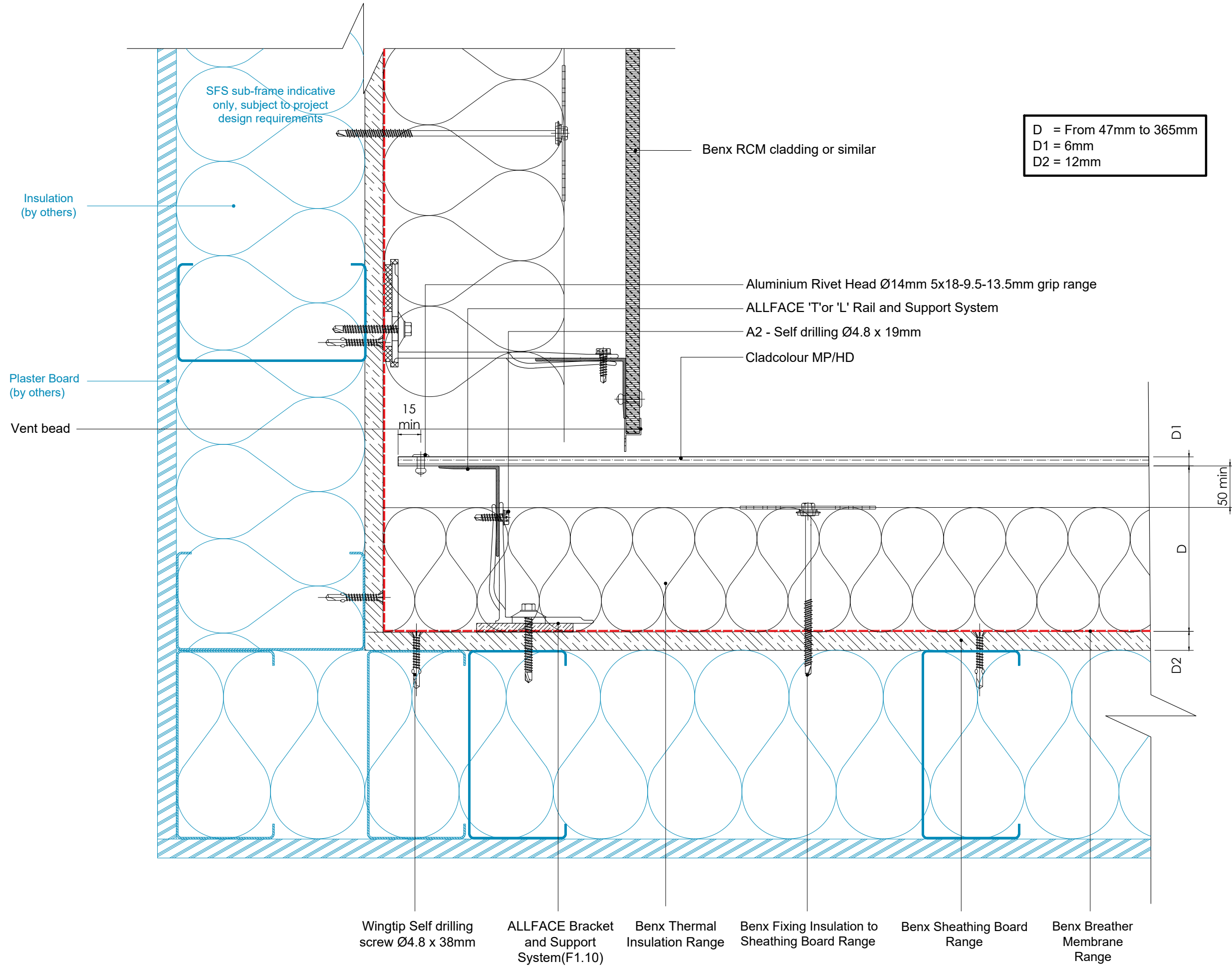
BY	STATUS:	INFORMATION
MAB	PROJECT:	Cladcolour Rainscreen system
	ISO No:	5068
	DRAWING No:	5068-TD-CC-AF-SFS-P-16
	DESCRIPTION:	BRICKWORK ABUTMENT JOINT DETAIL

DRAWN:	MAB
CHECK:	AR
DATE:	APR 24
REV:	A

D = From 47mm to 365mm  
 D1 = 6mm  
 D2 = 12mm



REV	DATE	NOTE	BY	STATUS:	INFORMATION	DRAWN:
A	29.04.24	First Issue	MAB	PROJECT:	Cladcolour Rainscreen system	MAB
				ISO No:	5068	CHECK:
				DRAWING No:	5068-TD-CC-AF-SFS-P-17	AR
				DESCRIPTION:	JOINT WITH OTHER CLADDING SYSTEM	NTS@A3
						DATE:
						APR 24
						REV:
						A



Insulation  
(by others)

Plaster Board  
(by others)

Vent bead

SFS sub-frame indicative  
only, subject to project  
design requirements

Benx RCM cladding or similar

D = From 47mm to 365mm  
D1 = 6mm  
D2 = 12mm

Aluminium Rivet Head Ø14mm 5x18-9.5-13.5mm grip range

ALLFACE 'T' or 'L' Rail and Support System

A2 - Self drilling Ø4.8 x 19mm

Cladcolour MP/HD

15 min

D1

50 min

D

D2

Wingtip Self drilling  
screw Ø4.8 x 38mm

ALLFACE Bracket  
and Support  
System(F1.10)

Benx Thermal  
Insulation Range

Benx Fixing Insulation to  
Sheathing Board Range

Benx Sheathing Board  
Range

Benx Breather  
Membrane  
Range



Benx Ltd, Lonsdale Chambers,  
Lonsdale Street,  
Stoke-on-Trent  
Staffordshire  
ST4 4BT  
Telephone: 0845 130 0983  
Email:  
technicalservices@benx.co.uk

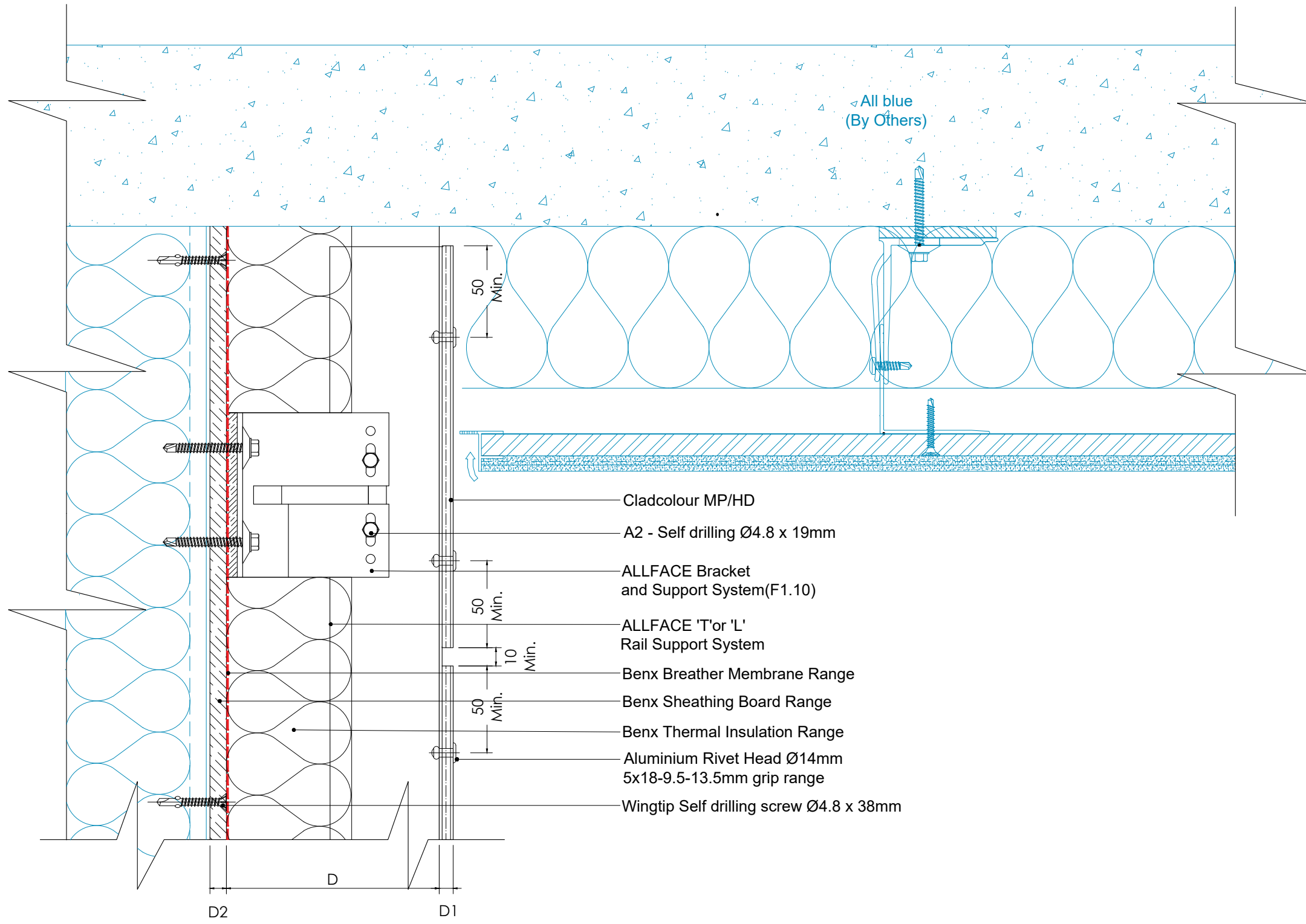
All performance data & systems specifications are for systems constructed with materials & components as shown. The inclusion or substitution of any other manufactures materials or components invalidates both test data, system performance and compliance with CDM 2015. The information is provided and based upon details received, which are assumed to include all the relevant facts and data. While it is believed to be correct, we accept no liability for its accuracy, adequacy or completeness. Recipients must satisfy themselves as to its suitability as we do not accept responsibility for any claims or consequential loss. Acceptance of the content and subsequent design responsibility rests entirely with the recipients. Any subsequent design changes that affect the detail which we are not informed of in a written format will void this detail. None of the content may be copied without the prior INFORMATION from the Benx Group Technical Services Department. This statement should be read in conjunction with the standard terms and conditions of Benx Group.

REV	DATE	NOTE	BY
A	29.04.24	First Issue	MAB

STATUS: INFORMATION	DRAWN: MAB
PROJECT: Cladcolour Rainscreen system	CHECK: AR
DRAWING No: 5068-TD-CC-AF-SFS-P-18	NTS@A3
DESCRIPTION: ABUTMENT JOINT WITH OTHER CLADDING SYSTEM	DATE: APR 24
	REV: A

ISO No: 5068

D = From 47mm to 365mm  
 D1 = 6mm  
 D2 = 12mm



- Cladcolour MP/HD
- A2 - Self drilling Ø4.8 x 19mm
- ALLFACE Bracket and Support System(F1.10)
- ALLFACE 'T' or 'L' Rail Support System
- Benx Breather Membrane Range
- Benx Sheathing Board Range
- Benx Thermal Insulation Range
- Aluminium Rivet Head Ø14mm 5x18-9.5-13.5mm grip range
- Wingtip Self drilling screw Ø4.8 x 38mm

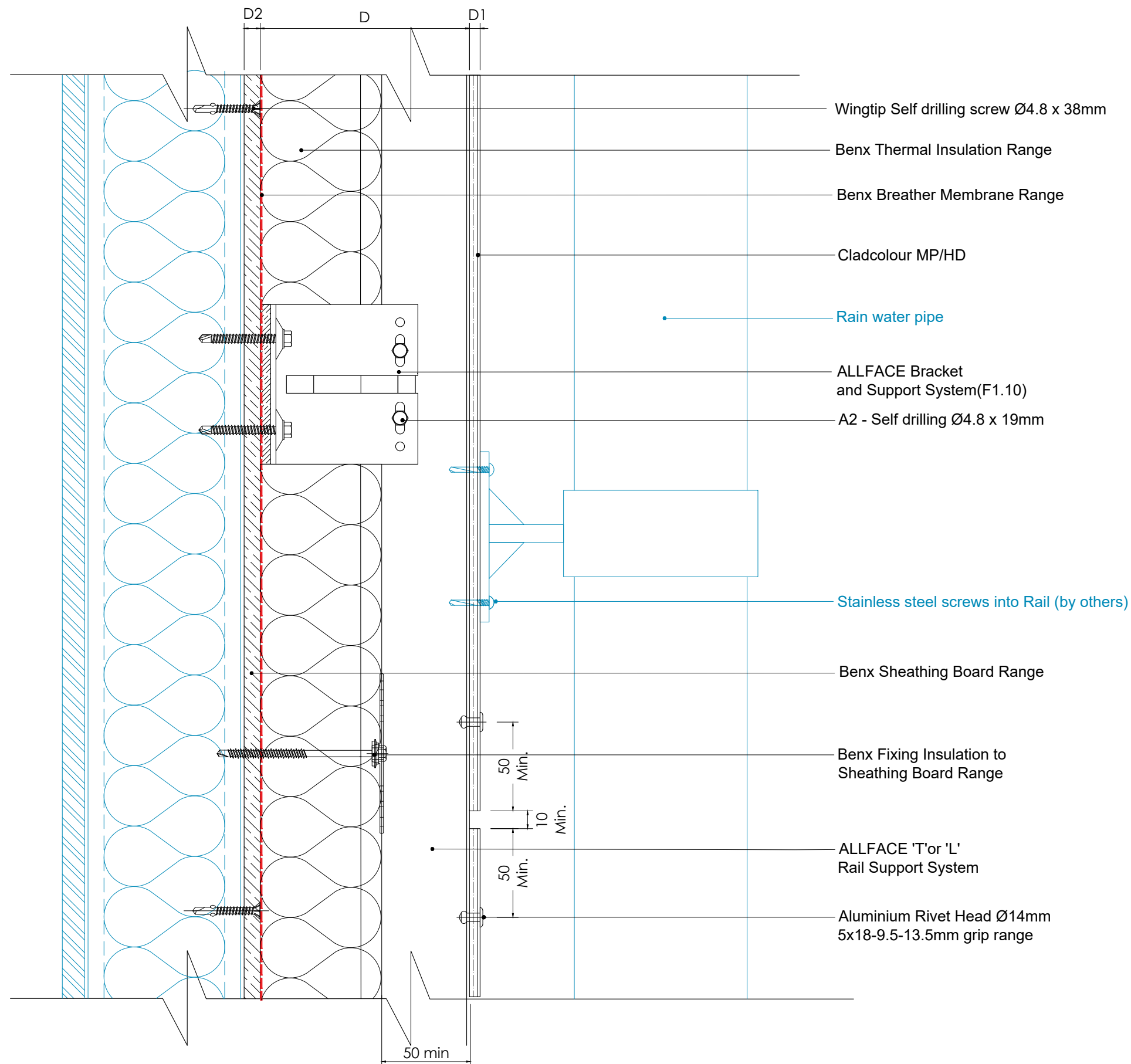


Benx Ltd, Lonsdale Chambers,  
 Lonsdale Street,  
 Stoke-on-Trent  
 Staffordshire  
 ST4 4BT  
 Telephone: 0845 130 0983  
 Email:  
[technicalservices@benx.co.uk](mailto:technicalservices@benx.co.uk)

All performance data & systems specifications are for systems constructed with materials & components as shown. The inclusion or substitution of any other manufactures materials or components invalidates both test data, system performance and compliance with CDM 2015. The information is provided and based upon details received, which are assumed to include all the relevant facts and data. While it is believed to be correct, we accept no liability for its accuracy, adequacy or completeness. Recipients must satisfy themselves as to its suitability as we do not accept responsibility for any claims or consequential loss. Acceptance of the content and subsequent design responsibility rests entirely with the recipients. Any subsequent design changes that affect the detail which we are not informed of in a written format will void this detail. None of the content may be copied without the prior INFORMATION from the Benx Group Technical Services Department. This statement should be read in conjunction with the standard terms and conditions of Benx Group.

REV	DATE	NOTE	BY	STATUS:	INFORMATION	DRAWN:
A	29.04.24	First Issue	MAB	PROJECT:	Cladcolour Rainscreen system	MAB
				ISO No:	5068	CHECK:
				DRAWING No:	5068-TD-CC-AF-SFS-P-19	AR
				DESCRIPTION:	SUSPENDED SOFFIT DETAIL	NTS@A3
						DATE:
						APR 24
						REV:
						A

D = From 47mm to 365mm  
 D1 = 6mm  
 D2 = 12mm

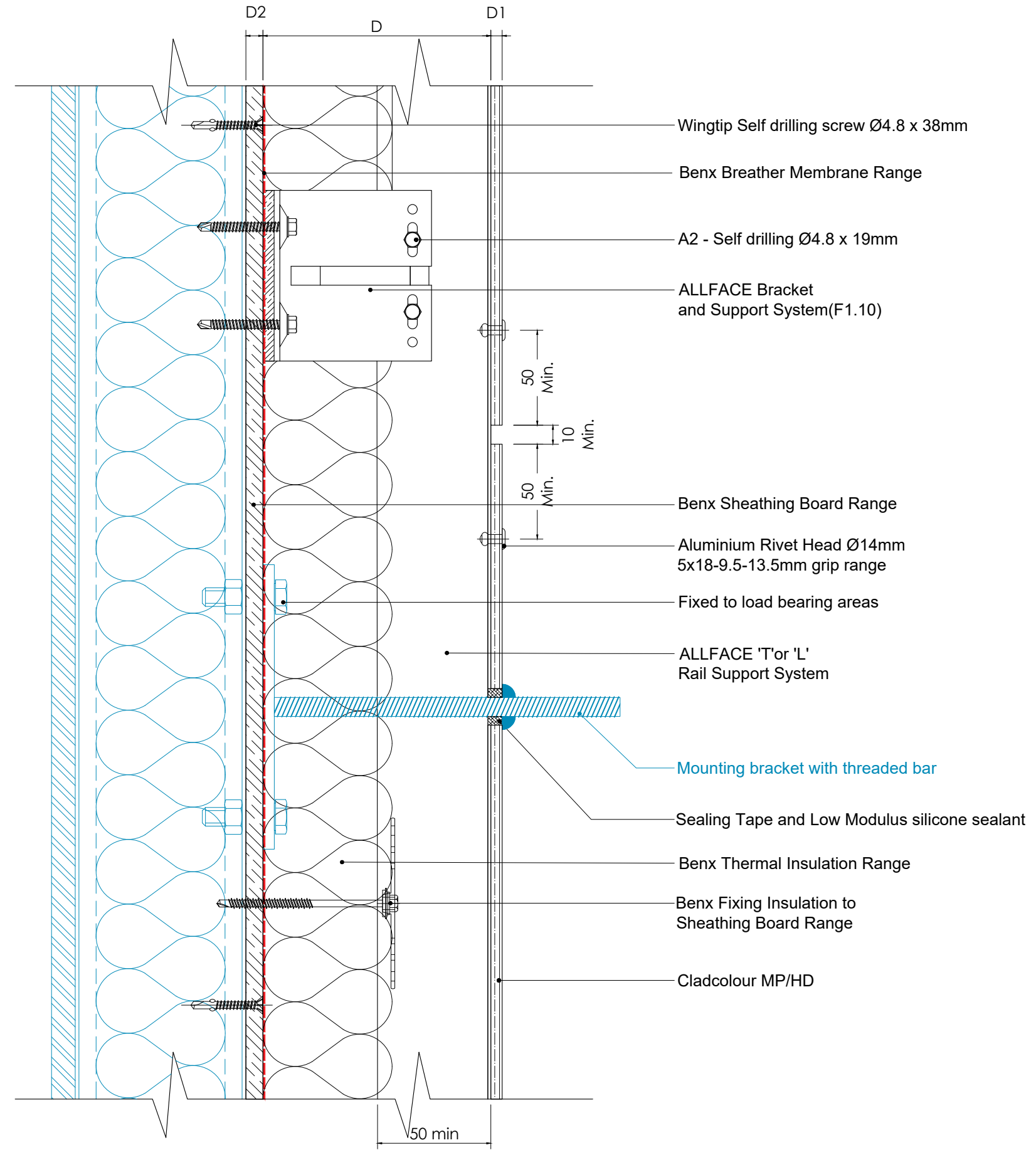


Benx Ltd, Lonsdale Chambers,  
 Lonsdale Street,  
 Stoke-on-Trent  
 Staffordshire  
 ST4 4BT  
 Telephone: 0845 130 0983  
 Email:  
[technicalservices@benx.co.uk](mailto:technicalservices@benx.co.uk)

All performance data & systems specifications are for systems constructed with materials & components as shown. The inclusion or substitution of any other manufactures materials or components invalidates both test data, system performance and compliance with CDM 2015. The information is provided and based upon details received, which are assumed to include all the relevant facts and data. While it is believed to be correct, we accept no liability for its accuracy, adequacy or completeness. Recipients must satisfy themselves as to its suitability as we do not accept responsibility for any claims or consequential loss. Acceptance of the content and subsequent design responsibility rests entirely with the recipients. Any subsequent design changes that affect the detail which we are not informed of in a written format will void this detail. None of the content may be copied without the prior INFORMATION from the Benx Group Technical Services Department. This statement should be read in conjunction with the standard terms and conditions of Benx Group.

REV	DATE	NOTE	BY	STATUS:	INFORMATION	DRAWN:
A	29.04.24	First Issue	MAB	PROJECT:	Cladcolour Rainscreen system	MAB
				ISO No:	5068	CHECK:
				DRAWING No:	5068-TD-CC-AF-SFS-P-20	AR
				DESCRIPTION:	EXTERNAL FIXING HEAVY DUTY	NTS@A3
						DATE:
						APR 24
						REV:
						A

D = From 47mm to 365mm  
 D1 = 6mm  
 D2 = 12mm



Benx Ltd, Lonsdale Chambers,  
 Lonsdale Street,  
 Stoke-on-Trent  
 Staffordshire  
 ST4 4BT  
 Telephone: 0845 130 0983  
 Email:  
[technicalservices@benx.co.uk](mailto:technicalservices@benx.co.uk)

All performance data & systems specifications are for systems constructed with materials & components as shown. The inclusion or substitution of any other manufactures materials or components invalidates both test data, system performance and compliance with CDM 2015. The information is provided and based upon details received, which are assumed to include all the relevant facts and data. While it is believed to be correct, we accept no liability for its accuracy, adequacy or completeness. Recipients must satisfy themselves as to its suitability as we do not accept responsibility for any claims or consequential loss. Acceptance of the content and subsequent design responsibility rests entirely with the recipients. Any subsequent design changes that affect the detail which we are not informed of in a written format will void this detail. None of the content may be copied without the prior INFORMATION from the Benx Group Technical Services Department. This statement should be read in conjunction with the standard terms and conditions of Benx Group.

REV	DATE	NOTE	BY	STATUS:	INFORMATION	DRAWN:	MAB
A	29.04.24	First Issue	MAB	PROJECT:	Cladcolour Rainscreen system	CHECK:	AR
				DRAWING No:	5068-TD-CC-AF-SFS-P-21	DATE:	APR 24
				DESCRIPTION:	EXTERNAL FIXING	REV:	A
				ISO No:	5068		