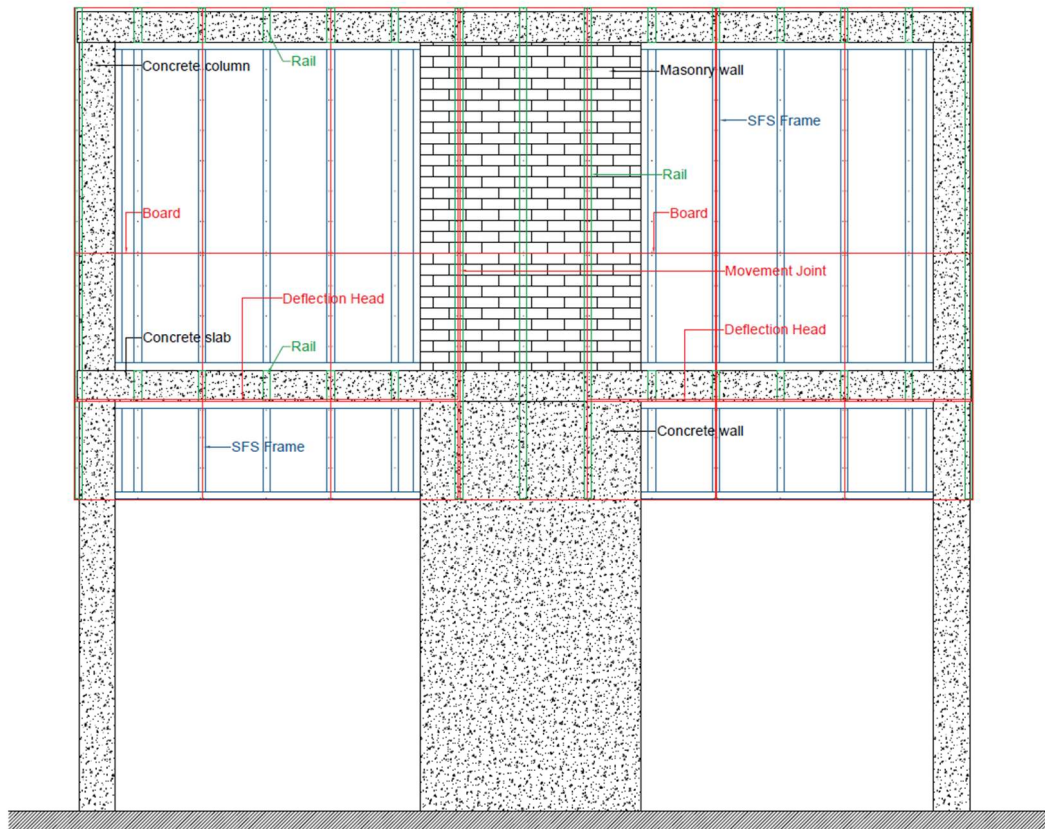


**ISO 5266**  
**Report On Building Boards Fixed on to Concrete or Masonry structures**

August 2022





**Benx Ltd.**

Lonsdale Chambers  
Lonsdale Street  
Stoke-On-Trent  
Staffordshire  
ST4 4BT

T. 0845 130 0982

E. [technicalservices@benx.co.uk](mailto:technicalservices@benx.co.uk)

W. [www.benx.co.uk](http://www.benx.co.uk)

## **Introduction**

This report aims to give awareness on how to fix the company building boards to concrete and masonry structures. The report has been created to help ticket system agents, as several customers have been asking for recommendations.

Our boards BBA certificates state that the boards are applied to lightweight steel and timber frames, this kind of frames tend to be within concrete or masonry structures, we will explain the interfaces and fixing systems we recommend when this happens,

The frame to which the boards are fixed must be structurally sound, designed and constructed following the requirements of the relevant standards and building regulations:

- Steel frame BS EN 1993-1-1 and BS EN 1993-1-3
- Timber frame BS EN 1995-1-1 and BS EN 351-1

Benx more common boards are:

- Y-Wall high quality flexible calcium silicate cement-based building board.  
BBA 14/5109
- Multipurpose highly versatile cellulose fibre cement building board.  
BBA 19/5708
- Densglass sheathing high performance consisting of a fiberglass matt with a gypsum core. BBA 21/5958



[www.benx.co.uk](http://www.benx.co.uk)

[technicalservices@benx.co.uk](mailto:technicalservices@benx.co.uk)

0845 130 0982



**Benx Ltd.**

Lonsdale Chambers  
Lonsdale Street  
Stoke-On-Trent  
Staffordshire  
ST4 4BT

T. 0845 130 0982

E. [technicalservices@benx.co.uk](mailto:technicalservices@benx.co.uk)

W. [www.benx.co.uk](http://www.benx.co.uk)

## **Manufacturer's advice**

### **Y-Wall**

The manufacturer does not recommend installing Y-Wall directly onto concrete or masonry.

### **Multipurpose**

In general, Multipurpose boards are suitable to work directly with masonry or concrete structures because it contains cement. However, each board have its constraints, in general.

### **Densglass**

Densglass boards are suitable to work directly with masonry or concrete structures.

## **Recommendations**

If in doubt, detailed drawings must be provided by the client for review to give an accurate project-specific solution.

We recommend this kind of installation based in the assumption that concrete/masonry structures are not 100% planar and the interface with frames have gaps, not being the resulting surfaces that will support the boards totally flush.

To fix the boards to the concrete/masonry areas we will need fillets, tophats, rails, hollow sections or timber battens depending on the project requirements, the dimension of the gaps with a minimum of 15mm. There are fixing pattern reports for all the boards available.

We do not recommend install the boards directly onto the concrete/masonry substrate as the boards may need to be pre-drilled, also there may be a requirement for a wall plug or fastener to secure it, what is time consuming.

Benx boards are not structural, the frames without the boards must be able to take the full wind actions and racking loads and be capable of sustaining the weight of the boards. The adequacy of the frames is outside the scope of our certificates and must be verified by the manufacturer/installer.

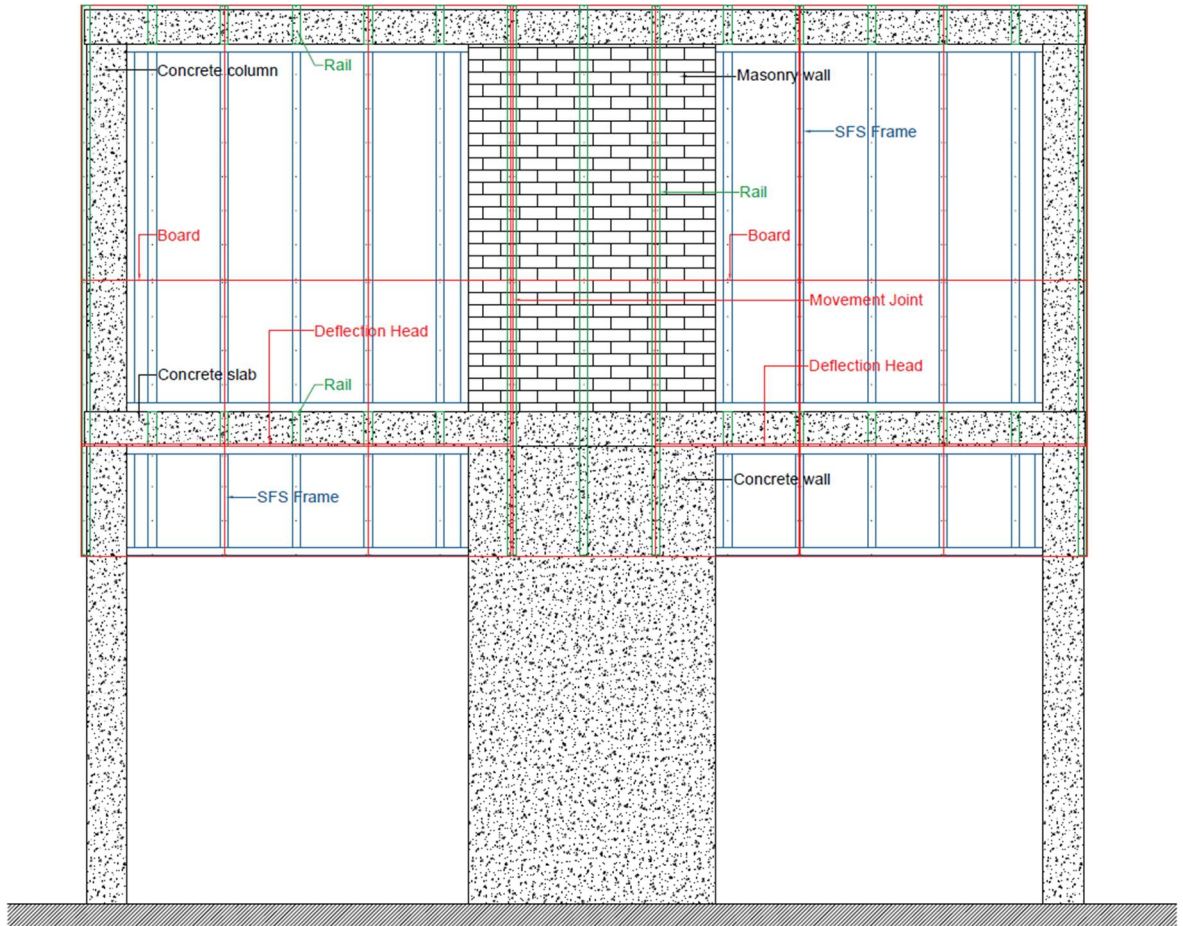


[www.benx.co.uk](http://www.benx.co.uk)

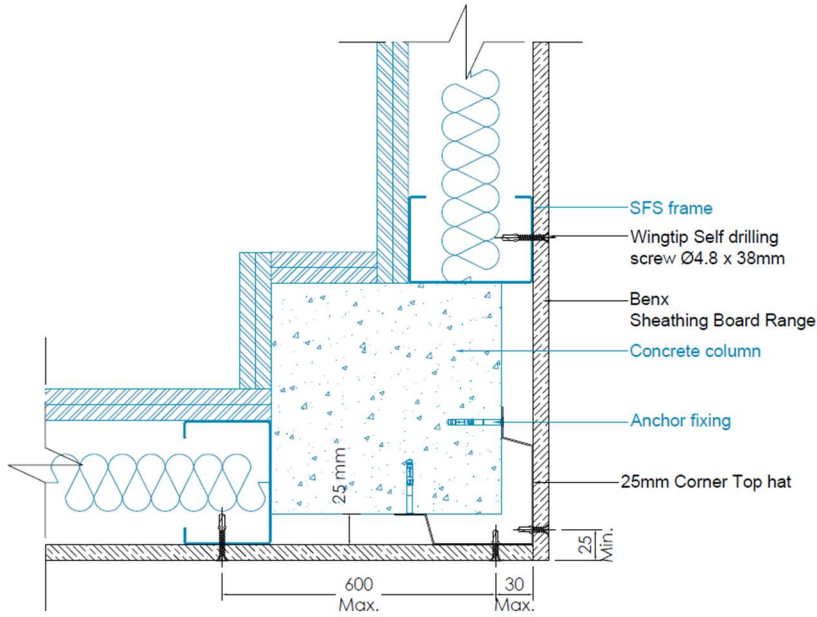
[technicalservices@benx.co.uk](mailto:technicalservices@benx.co.uk)

0845 130 0982

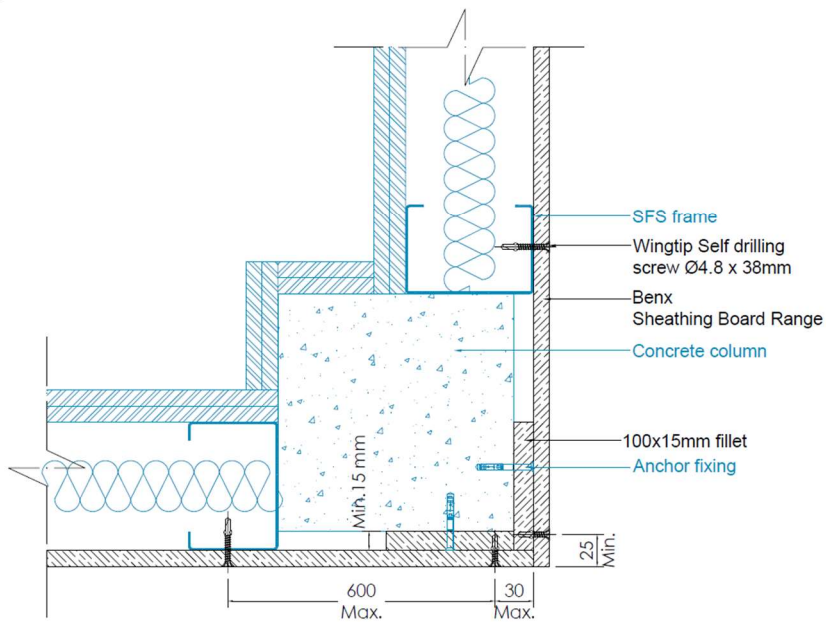
**Typical elevation**



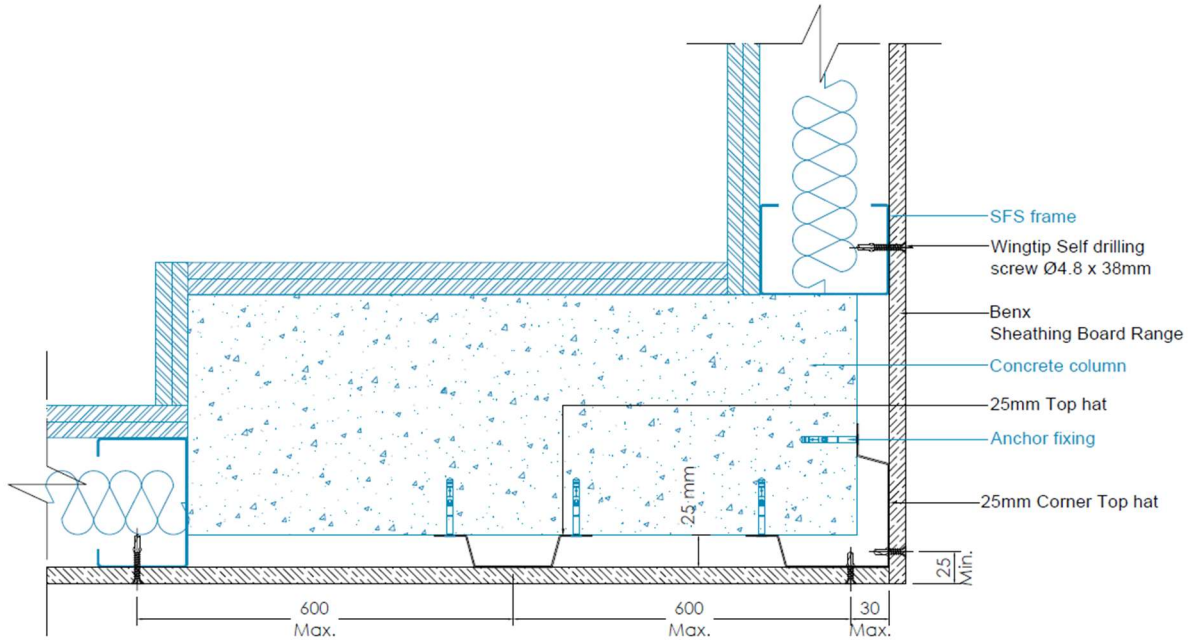
**Typical corner details**



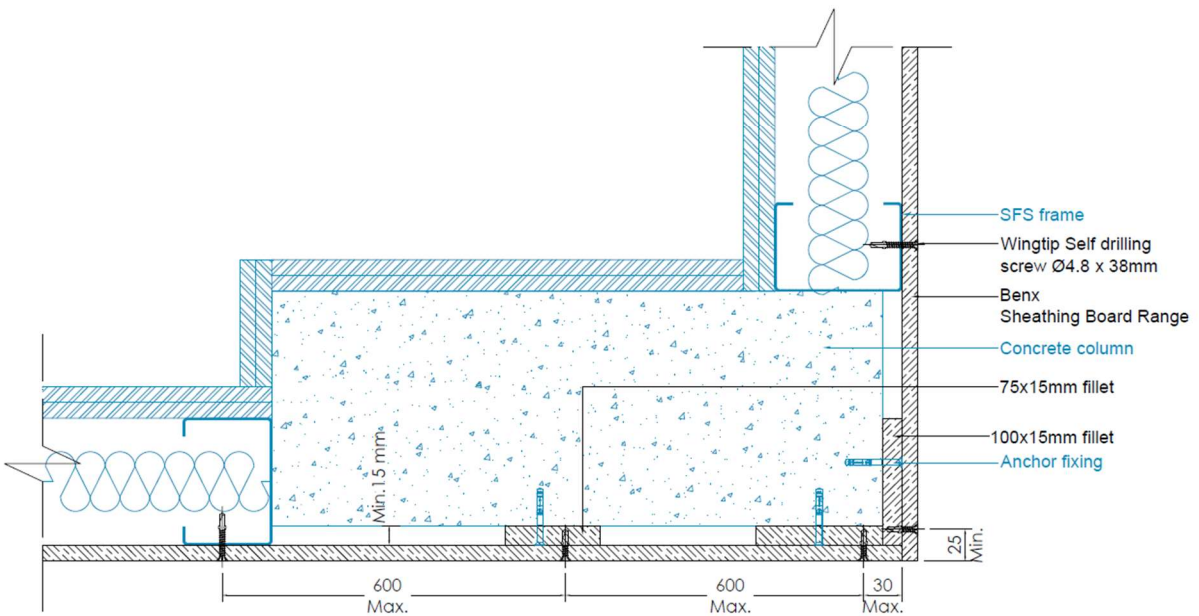
Corner detail on top hat



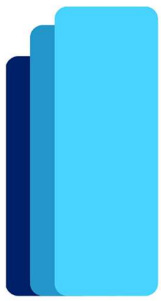
Corner detail on fillets



Wall detail on top hat



Wall detail on fillets



**benx**  
f a ç a d e s

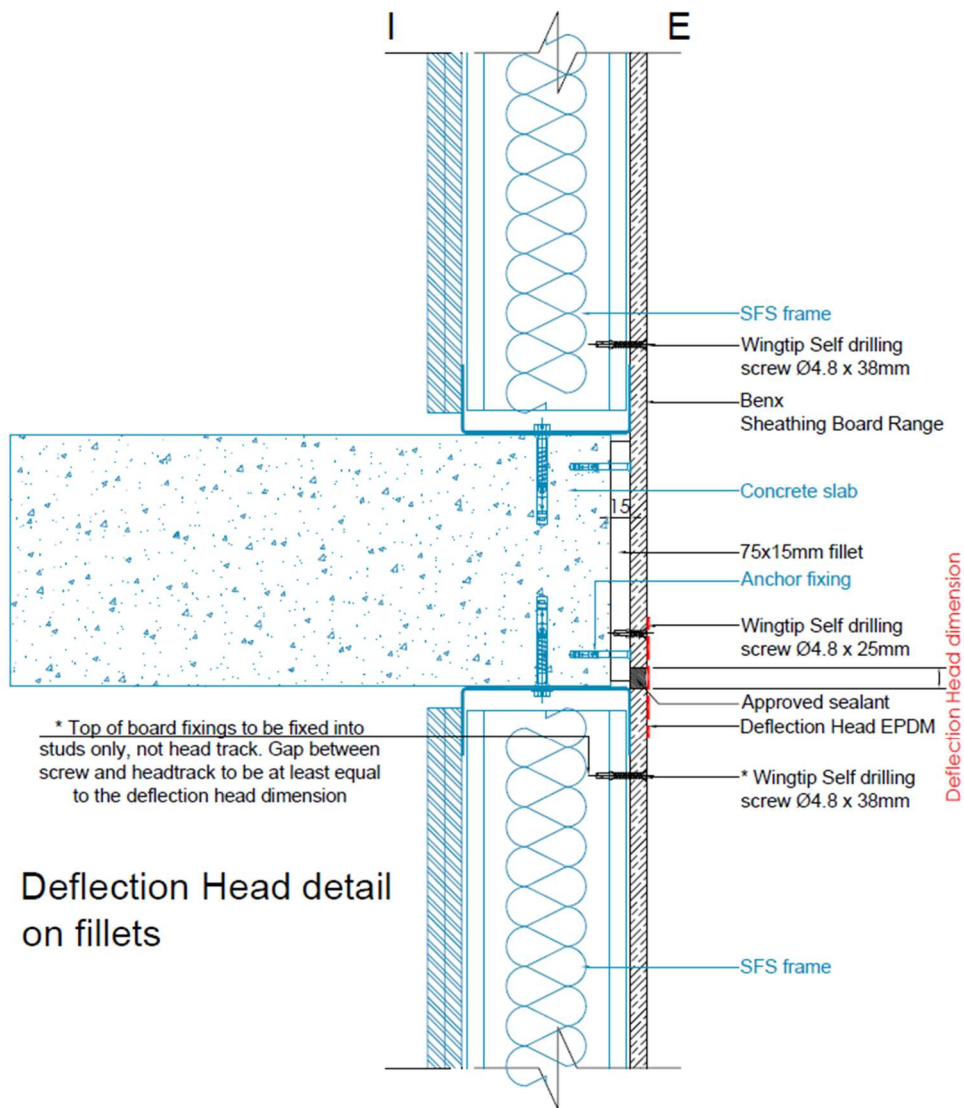
**Benx Ltd.**

Lonsdale Chambers  
Lonsdale Street  
Stoke-On-Trent  
Staffordshire  
ST4 4BT

T. 0845 130 0982

E. [technicalservices@benx.co.uk](mailto:technicalservices@benx.co.uk)

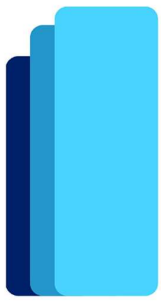
W. [www.benx.co.uk](http://www.benx.co.uk)



[www.benx.co.uk](http://www.benx.co.uk)

[technicalservices@benx.co.uk](mailto:technicalservices@benx.co.uk)

0845 130 0982



# benx

f a ç a d e s

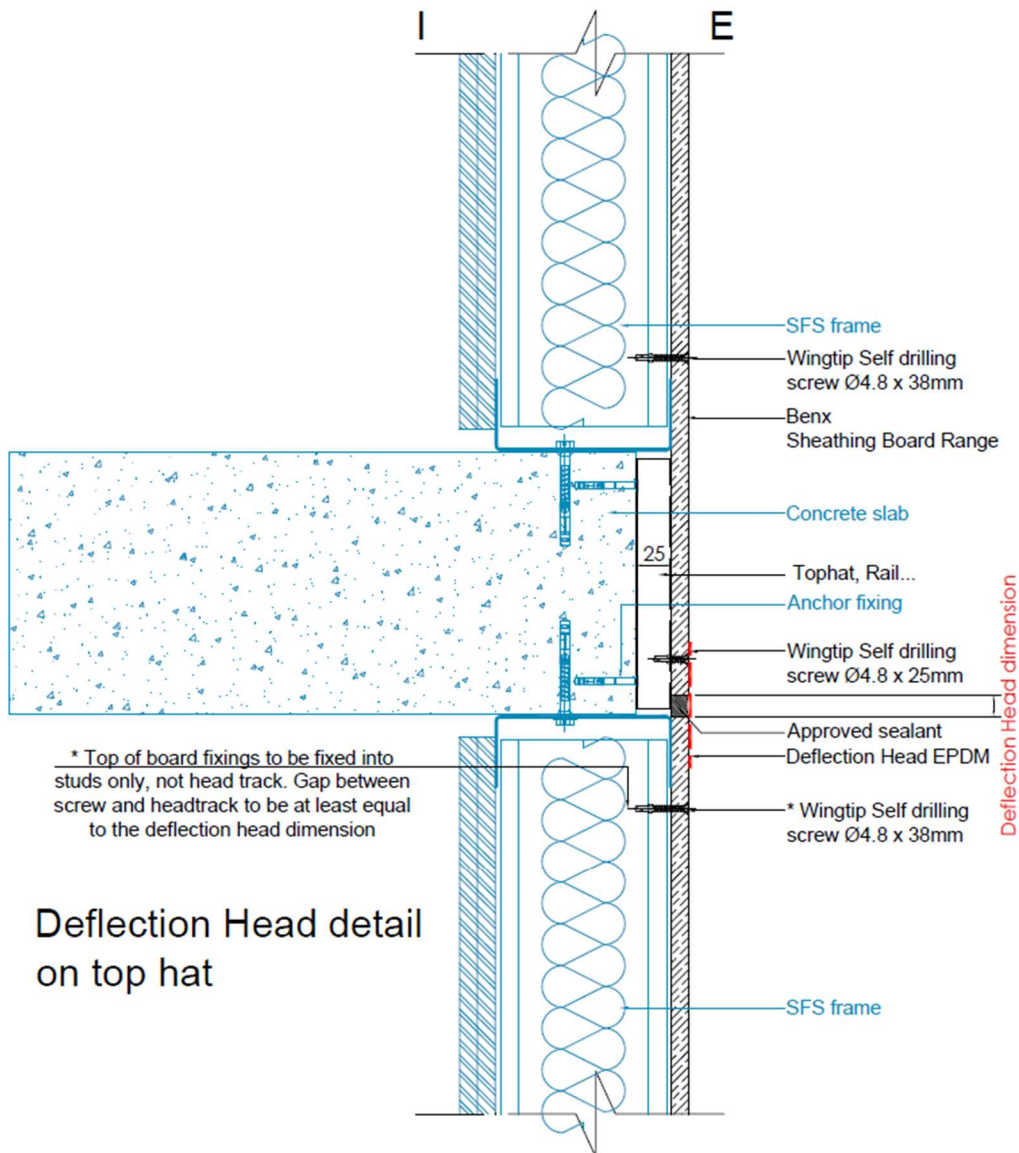
**Benx Ltd.**

Lonsdale Chambers  
Lonsdale Street  
Stoke-On-Trent  
Staffordshire  
ST4 4BT

T. 0845 130 0982

E. [technicalservices@benx.co.uk](mailto:technicalservices@benx.co.uk)

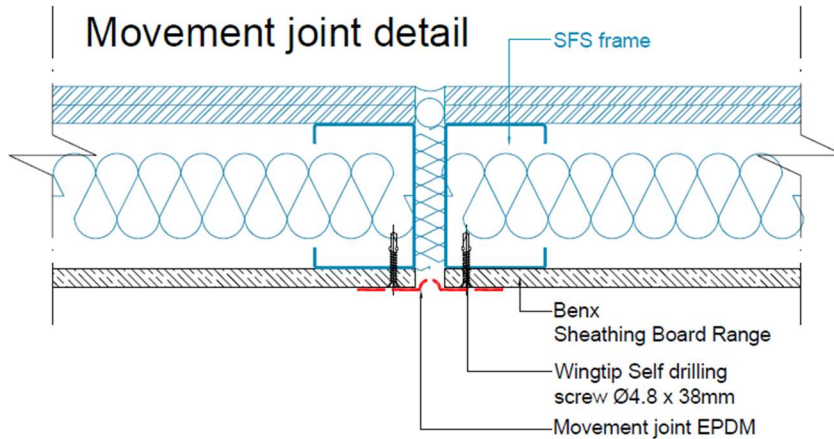
W. [www.benx.co.uk](http://www.benx.co.uk)



[www.benx.co.uk](http://www.benx.co.uk)

[technicalservices@benx.co.uk](mailto:technicalservices@benx.co.uk)

0845 130 0982



Movement joint and Deflection Head details, if required are advisory and need to be engineered for any single project.

All showed details are based on cavities of a minimum 15mm for fillets and 25mm for top hats, for another cavity dimensions contact Benx technical team,