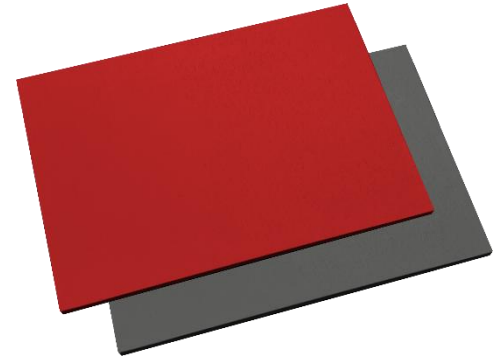


TECHNICAL DATA SHEET CLADCOLOUR "MP" FAÇADE PANEL

This data sheet provides information on the durability and resistance of CLADCOLOUR MP.



Material Composition	Fibre Reinforced Cement Panel, consisting of Portland cement, quartz, cellulose fibre and other non-hazardous ingredients.
Properties	A durable factory finished façade panel proving good UV resistance and weathering properties.
Environment	For use in normal environmental areas. Use in coastal areas does not affect panel performance.
Decorative Coating	A waterborne high adhesion coating which provides a flexible and tough surface with excellent UV resistance & durability. Available in the full range of RAL & NCS Colours.

Dimensional Conformity Nominal Weight (Kg) – Standard Sizes

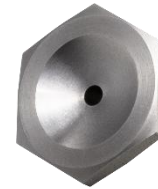
Sheet Sizes	Length	Width	Thickness	Kg/m ²	Kg/Sheet
	Sheet Sizes	2400mm	1200mm/ 1220mm	9mm	12.4
12mm				16.5	47.5/48.4
2700mm		9mm		12.4	44.9/45.7
		12mm		16.5	59.8/60.8
3000mm					

Technical Information		Value
Nominal Density (Oven Dry)		1375kg/m ³
Avg Bending Strength (Modulus of Rupture)		10.5 N/mm ² (saturated)
Biological Resistance		Highly Resistance
Moisture Content		8%
Moisture Movement (saturate to EMC)		0.06-0.08%
Water Absorption (by dry weight)		30%
MoR** Oven Dry - Across		19Mpa
MoR** Oven Dry - Along		11Mpa
MoR** Saturated - Across		14Mpa
MoR** Saturated - Along		7 Mpa
Thermal Conductivity		0.12W/mk
** MoR = Modulus of Rupture		
Panel Optimisation		
<p>Project specific panels are cut to size from 1 of the large format sheets. Benx can provide an optimisation service that allows the most efficient use of large sheets. In addition to this, our specialised manufacturing process allows us to finish optimised panels as opposed to always cutting from full sized finished panels. This helps reduces wastage and cost as well as being more environmentally friendly.</p>		
Surface Condition		Dimensional Tolerance
Front - Smooth		Length +1/-2mm
Back - Textured		Width +1/-2mm
		Thickness ±10%
Reaction to Fire		
Non-combustible – Class A1 – BS EN 13501-1:2018 + A1:2009 Application Dependant		
Certification & Warranty		
CE Marked		Yes
Limitations of Use		
<p><u>Installation</u></p> <p>Reasonable precautions must be taken to ensure the boards are not damaged during installation. When cutting the boards, power and hand tools should be used with the care and in accordance with the Certificate holder's recommendations. Power tools should only be used by individuals who have been instructed and trained to use them safely. Appropriate Personal Protective Equipment (PPE) should be used. It is important to observe appropriate health and safety legislation when working on site (that is, using personal protective clothing and equipment). The Certificate holder should be consulted for material safety data sheets and advice. When working in enclosed areas, precautions should be taken to ensure dust levels are controlled in accordance with the current issue of EH40/2005.</p>		

Installation/Fixing

CLADCOLOUR MP can be fitted to either a timber support structure or an aluminium support system using Stainless Steel Screws or Aluminium / Stainless Steel rivets.

1. Fitting to timber substrates a screw designation of 4.8mm in diameter X 38mm in length with a 12mm head and hexalobular drive recess is required. Image 1 Below.
2. Installing the panels to an aluminium support rail system will require a) Centralising tool. b) Rivet spacer nosepiece c) Aluminium / Stainless Steel Rivets to the following specification 4.8mm x 18mm body incorporating a 16mm Dome Head. The rivet body and head should be made from AlMg5 Aluminium with a captive A2 (304) grade Stainless Steel mandrel. Further details and know how are available on request from our technical department.



a). Centralising Tool

b). Rivet Spacer Nosepiece



C). AlMg5 Aluminium / Stainless Steel Rivet 4.8 x 18 x 16

Image 1. Stainless Steel 4.8 X 38 X 12 Façade Screw with T20 Hexalobular Drive Recess

Disclaimer of Liability

The information supplied in this Technical Data Sheet is designed only as guidance for the safe use, storage and handling of the product. This information is correct to the best of our knowledge and belief at the date of publication however no guarantee is made to its accuracy. This information relates only to the specific material designated and may not be valid for such material used in combination with any other materials or in any other process.

RCM Ltd nor any other subsidiary of the Benx Group will be held accountable for any damage resulting from handling or from contact with the above product. This data sheet and the information it contains is not intended to supersede any terms or conditions of sale and does not constitute a specification. Nothing contained herein is to be construed as a recommendation for use in violation of any patent or applicable laws or regulations.